

690/700 Volt PSC Square Body

Mersen 690/700V PSC fuse-links provide maximum flexibility in equipment design and ultimate protection for today's power conversion equipment. These square body fuse-links are available in four different body sizes, each size having seven worldwide acceptable mounting styles. The different mounting styles and body sizes along with a broad range of ampere ratings allow greatest flexibility in equipment design.

Mersen PSC fuses have been engineered to provide state-of-the-art protection for SCR's, diodes, thyristors, GTO's and IGBT devices. They have pure silver, die-cut elements embedded in solidified sand, which helps control arcing characteristics for low I^2t and high interrupting rating. All contact surfaces are silver plated and all hardware is non-magnetic.

All fuse links are equipped with a low voltage trip-indicator. This trip-indicator can operate a field mountable microswitch which is easily mounted directly onto the fuse even while in service.

Features/Benefits:

- Choice of mounting styles gives wide choice for equipment design
- Broad range of ampere ratings in a given body size for design flexibility
- IEC 269-4 compliance for worldwide semiconductor applications

* For Microswitch information see page J7

Highlights:

- Extremely fast-acting
- Current-limiting
- Very low I^2t
- Worldwide acceptability superior cycling ability

Applications:

- Protection of rectifiers, inverters, DC drives,
- UPS Systems, reduced voltage motor starters, and other equipment in globally accepted applications



Ratings:

Volts : 500-700 VAC
 : DC - consult factory
Amps : 40-2500A
I.R. : 200kA I.R.

Approvals:

- UL recognized component
File E76491
- Sizes 30, 31, 32, 33 tested to IEC 269.4



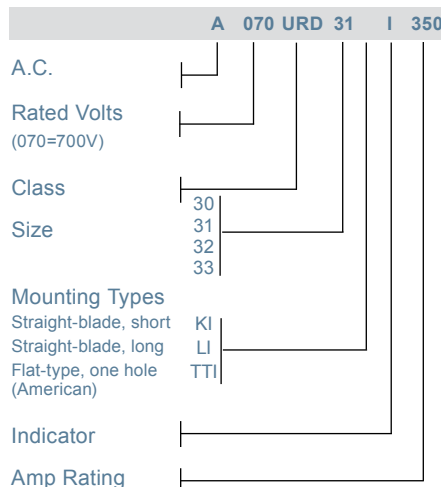
Part Number Designation:

6,9 URD: European/IEC
 Mounting Style/Approval
 Tested @ 1.1 V_N

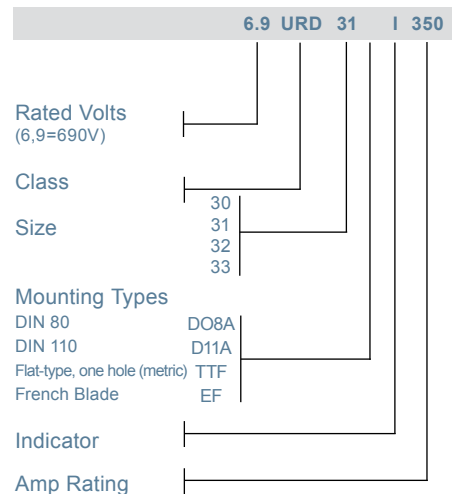
AO70 URD: North American
 Mounting Style/Approval
 Tested @ V_N

* V_N = rated voltage

N. American Reference Numbering System



European Reference Numbering System



690/700 Volt PSC Square Body

European Blade, Type DO8A

Body Size	Type	Dimensions - mm						
		A	B	C	D	E	F	G
30	D08	40	25	12.5	21	17	77	110
31		51	25	12.5	25	22.5	77	110
32		60	32	16	30	27	77	110
33		74.5	40	20	37.2	34.25	77	110

European Blade, Type D11A

Body Size	Type	Dimensions - mm						
		A	B	C	D	E	F	G
30	D11	40	25	12.5	21	17	101.6	134.6
31		51	25	12.5	25.5	22.5	101.6	134.6
32		60	32	16	30	27	101.6	134.6
33		74.5	40	20	37.2	34.25	101.6	134.6

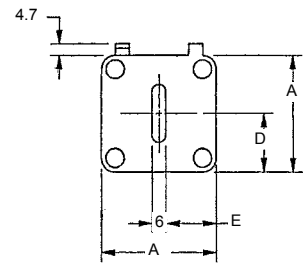
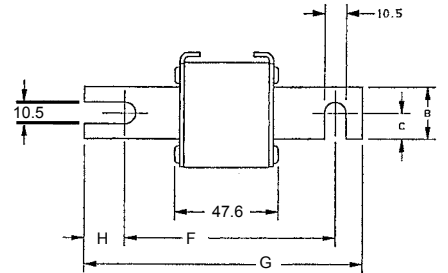
North American Straight Blade, Type KI

Body Size	Type	Dimensions - mm / in								
		A	B	C	D	E	F	G	H	J
30	KI	40 (1.57)	25 (.98)	12.5 (.49)	21 (.83)	18 (.71)	68 (2.68)	107 (4.21)	129 (5.08)	10.5 (.41)
31		.51	25	12.5	25.5	22.5	67.6	107.1	128.8	14.3
32		60 (2.36)	32 (1.26)	16 (.63)	30 (1.18)	27 (1.06)	74.2 (2.92)	109 (4.29)	134 (5.28)	14.6 (.57)
33		74.5 (2.93)	40 (1.57)	20 (.79)	37.2 (1.46)	34.2 (1.35)	75.4 (2.97)	107.6 (4.24)	134 (5.28)	15.9 (.63)

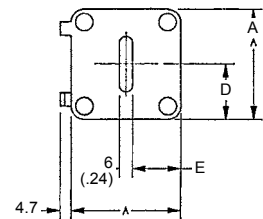
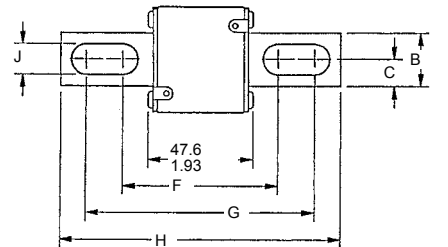
North American Straight Blade, Type LI

Body Size	Type	Dimensions - mm / in								
		A	B	C	D	E	F	G	H	J
30	LI	40 (1.57)	25 (.98)	12.5 (.49)	21 (.83)	18 (.71)	87.6 (3.45)	126.6 (4.98)	148.6 (5.85)	10.5 (.41)
31		51 (2.01)	25 (.98)	12.5 (.49)	25.5 (1.00)	22.5 (.89)	91.6 (3.61)	122.4 (4.82)	148.6 (5.85)	14.6 (.57)
32		60 (2.36)	32 (1.26)	16 (.63)	30 (1.18)	27 (1.06)	94.2 (3.71)	129 (5.08)	153 (6.02)	14.6 (.57)
33		74.5 (2.93)	40 (1.57)	20 (.79)	37.2 (1.46)	34.2 (1.35)	94.4 (3.72)	126.6 (4.98)	153 (6.02)	15.9 (.63)

Outline Dimensions Types D08A and D11A



Types KI and LI



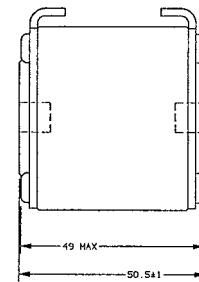
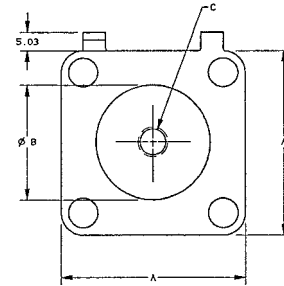
690/700 Volt PSC Square Body

North American Flat Single Hole, Type TTI

Body Size	Type	Dimensions - mm / in		
		A	B	C
30	TTI	1.57 (40)	1.00 (25)	5/16-18 x .35
31		2.00 (50.8)	1.19 (30.2)	5/16-18 x .35
32		2.37 (60.3)	1.50 (38.1)	3/8-16 x .35
33		2.94 (74.6)	1.81 (46)	1/2-13 x .35

Outline Dimensions

Types TTI and TTF



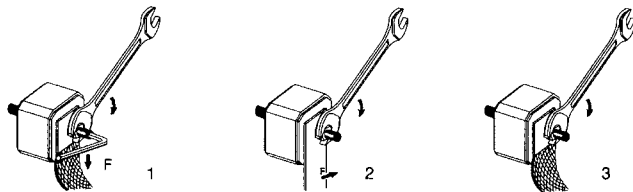
European Flat Single Hole, Type TTF

Body Size	Type	Dimensions - mm		
		A	B	C
30	TTF	40	26	M8 x 1.25 x 6 DP
31		51	30	M8 x 1.25 x 9 DP
32		60	38	M10 x 1.50 x 9 DP
33		74.5	46	M12 x 1.75 x 9 DP

Standard Threaded Studs

Size	Ref. and Dimension Per Pair of Studs	Weight (g)	Max Stud Mounting Torque (Nm)	Max Nut Tightening Torque (Nm)*		
				Fig. 1	Fig. 2	Fig. 3
30 & 31	S 98 801 (HC M8 X 30 & M 8 X 35)	23	10	13.5	13.5	13.5
32	T 98 802 (HC M 10 X 30 & M 10 X 50)	40	15	26	26	26
33	V 98 803 (HC M 12 X 35 & M 12 X 50)	60		46	46	46
2X32	W 98 804 (HC M 10 X 50)	50		26	26	26
2X33	X 98 805 (HC M 12 X 50)	70		46	46	46

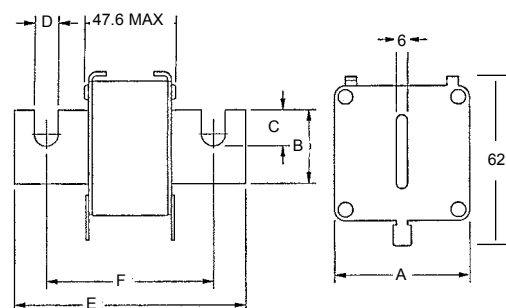
*in.lbs = Nm/.113



European French Blade, Type EF

Body Size	Type	Dimensions - mm					
		A	B	C	D	E	F
30	EF	40	18	11	9	100	76.6
31		50	25	16	10.5	110	86.5
32		59	32	21.2	13	13	90.8
33		74.5	40	19.5	13	13	91

Type EF



690/700 Volt PSC Square Body

690 Volt European/IEC Style Ratings and Application Data, D11A Mounting

Body Size	Amp Rating	Rated Voltage	Melting I ² t (A ² s x 10 ³)	Total I ² t @ 660VAC (A ² s x 10 ³)	** Watts Loss @ Rated Current (W)	Catalog No	New Description	Old Description
30	50	690	0.116	0.68	9	G301191	PC30UD69V50D1A	6,9URD30D11A0050
	63	690	0.2	1.09	14	Q300118	PC30UD69V63D1A	6,9URD30D11A0063
	80	690	0.33	1.75	19	R300119	PC30UD69V80D1A	6,9URD30D11A0080
	100	690	0.47	2.5	26	S300120	PC30UD69V100D1A	6,9URD30D11A0100
	125	690	0.85	4.5	30	T300121	PC30UD69V125D1A	6,9URD30D11A0125
	160	690	1.6	8.5	37	V300122	PC30UD69V160D1A	6,9URD30D11A0160
	200	690	3	15.5	42/43	W300123	PC30UD69V200D1A	6,9URD30D11A0200
	250	690	5.8	30	48/50	X300124	PC30UD69V250D1A	6,9URD30D11A0250
	315	690	12	62	53/55	Y300125	PC30UD69V315D1A	6,9URD30D11A0315
	350	690	15.5	80	57/60	Z300126	PC30UD69V350D1A	6,9URD30D11A0350
	400	690	23	120	60/65	A300127	PC30UD69V400D1A	6,9URD30D11A0400
	450	660	26	153	80/88	S300695	PC30UD69V450D1A	6,9URD30D11A0450
	500	660	41	245	80/88	Y301091	PC30UD69V500D1A	6,9URD30D11A0500
	550	660	52	305	80/90	Z301092	PC30UD69V550D1A	6,9URD30D11A0550
	31	200	690	2.6	14	45	H300019	PC31UD69V200D1A
250		690	4.7	25	52	J300020	PC31UD69V250D1A	6,9URD31D11A0250
315		690	7.5	40	65	K300021	PC31UD69V315D1A	6,9URD31D11A0315
350		690	10.5	55	67	P300048	PC31UD69V350D1A	6,9URD31D11A0350
400		690	19	100	68	L300022	PC31UD69V400D1A	6,9URD31D11A0400
450		690	26.5	140	70	M300023	PC31UD69V450D1A	6,9URD31D11A0450
500		690	37	195	70/72	N300024	PC31UD69V500D1A	6,9URD31D11A0500
550		690	52	280	70/75	P300025	PC31UD69V550D1A	6,9URD31D11A0550
630		690	75	390	75/85	Q300026	PC31UD69V630D1A	6,9URD31D11A0630
700		690	95	490	85/95	R300027	PC31UD69V700D1A	6,9URD31D11A0700
32	800	660	140	815	105/120	H300709	PC31UD69V800D1A	6,9URD31D11A0800
	400	690	15	80	72/75	P300186	PC32UD69V400D1A	6,9URD32D11A0400
	450	690	22	115	77/80	Q300187	PC32UD69V450D1A	6,9URD32D11A0450
	500	690	28	145	85/90	R300188	PC32UD69V500D1A	6,9URD32D11A0500
	550	690	37	195	90/95	S300189	PC32UD69V550D1A	6,9URD32D11A0550
	630	690	54	280	95/105	T300190	PC32UD69V630D1A	6,9URD32D11A0630
	700	690	76	400	100/110	V300191	PC32UD69V700D1A	6,9URD32D11A0700
	800	690	115	600	110/120	W300192	PC32UD69V800D1A	6,9URD32D11A0800
	900	660	170	900	110/125	X300193	PC32UD69V900D1A	6,9URD32D11A0900
33	1000	660	240	1250	115/135	Y300194	PC32UD69V10CD1A	6,9URD32D11A1000
	500	690	19	100	105	S300258	PC33UD69V500D1A	6,9URD33D11A0500
	550	690	27	140	105/110	T300259	PC33UD69V550D1A	6,9URD33D11A0550
	630	690	40	130	110/120	V300260	PC33UD69V630D1A	6,9URD33D11A0630
	700	690	55	300	115/125	W300261	PC33UD69V700D1A	6,9URD33D11A0700
	800	690	95	490	120/130	X300262	PC33UD69V800D1A	6,9URD33D11A0800
	900	690	135	700	120/135	Y300263	PC33UD69V900D1A	6,9URD33D11A0900
	1000	690	170	900	135/155	Z300264	PC33UD69V10CD1A	6,9URD33D11A1000
	1100	690	240	1260	135/160	A300265	PC33UD69V11CD1A	6,9URD33D11A1100
	1250	660	350	1850	150/180	B30026	PC33UD66V11CD1A	6,6URD33D11A1250
	1400	660	480	2500	160/200	C300267	PC33UD69V14CD1A	6,9URD33D11A1400
	1500	600	500		220	H301974	PC33UD60V15CD1A	6URD33D11A1500
1600	600	555		210/240	Z301437	PC33UD60V16CD1A	6URD33D11A1600	

** Watts loss data is published for both blade and tapped style mounting configurations. When two watts loss values are shown this represents tapped/blade values respectively.

690/700 Volt PSC Square Body

690 Volt European/IEC Style Ratings and Application Data, D08A Mounting

Body Size	Amp Rating	Rated Voltage	Melting I ² t (A ² s x 10 ³)	Total I ² t @ 660VAC (A ² s x 10 ³)	** Watts Loss @ Rated Current (W)	Catalog No	New Description	Old Description
30	50	690	0.116	0.68	9	F301926	PC30UD69V50A	6,9URD30D08A0050
	63	690	0.2	1.09	14	E300108	PC30UD69V63A	6,9URD30D08A0063
	80	690	0.33	1.75	19	F300109	PC30UD69V80A	6,9URD30D08A0080
	100	690	0.47	2.5	26	S300120	PC30UD69V100D1A	6,9URD30D11A0100
	125	690	0.85	4.5	30	H300111	PC30UD69V125A	6,9URD30D08A0125
	160	690	1.6	8.5	37	J300112	PC30UD69V160A	6,9URD30D08A0160
	200	690	3	15.5	42/43	K300113	PC30UD69V200A	6,9URD30D08A0200
	250	690	5.8	30	48/50	L300114	PC30UD69V250A	6,9URD30D08A0250
	315	690	12	62	53/55	M300115	PC30UD69V315A	6,9URD30D08A0315
	350	690	15.5	80	57/60	N300116	PC30UD69V350A	6,9URD30D08A0350
	400	690	23	120	60/65	P300117	PC30UD69V400A	6,9URD30D08A0400
	450	660	26	153	80/88	A300403	PC30UD69V450A	6,9URD30D08A0450
	500	660	41	245	80/88	B300404	PC30UD69V500A	6,9URD30D08A0500
	550	660	52	305	80/90	C300405	PC30UD69V550A	6,9URD30D08A0550
31	200	690	2.6	14	45	Y300010	PC31UD69V200A	6,9URD31D08A0200
	250	690	4.7	25	52	Z300011	PC31UD69V250A	6,9URD31D08A0250
	315	690	7.5	40	65	A300012	PC31UD69V315A	6,9URD31D08A0315
	350	690	10.5	55	67	Q300049	PC31UD69V350A	6,9URD31D08A0350
	400	690	19	100	68	B300013	PC31UD69V400A	6,9URD31D08A0400
	450	690	26.5	140	70	C300014	PC31UD69V450A	6,9URD31D08A0450
	500	690	37	195	70/72	D300015	PC31UD69V500A	6,9URD31D08A0500
	550	690	52	280	70/75	E300016	PC31UD69V550A	6,9URD31D08A0550
	630	690	75	390	75/85	F300017	PC31UD69V630A	6,9URD31D08A0630
	700	690	95	490	85/95	G300018	PC31UD69V700A	6,9URD31D08A0700
800	660	140	815	105/120	D300406	PC31UD69V800A	6,9URD31D08A0800	
32	400	690	15	80	72/75	E300177	PC32UD69V400A	6,9URD32D08A0400
	450	690	22	115	77/80	F300178	PC32UD69V450A	6,9URD32D08A0450
	500	690	28	145	85/90	G300179	PC32UD69V500A	6,9URD32D08A0500
	550	690	37	195	90/95	H300180	PC32UD69V550A	6,9URD32D08A0550
	630	690	54	280	95/105	J300181	PC32UD69V630A	6,9URD32D08A0630
	700	690	76	400	100/110	K300182	PC32UD69V700A	6,9URD32D08A0700
	800	690	115	600	110/120	L300183	PC32UD69V800A	6,9URD32D08A0800
	900	660	170	900	110/125	M300184	PC32UD69V900A	6,9URD32D08A0900
	1000	660	240	1250	115/135	N300185	PC32UD69V1000A	6,9URD32D08A1000
	1100	600	270	1620	140/165	W302101	PC32UD60V1100A	6URD32D08A1100
	1250	500	410	1940	150/180	G300409	PC32UD50V1250A	5,5URD32D08A1250
33	500	690	19	100	105	G300248	PC33UD69V500A	6,9URD33D08A0500
	550	690	27	140	105/110	H300249	PC33UD69V550A	6,9URD33D08A0550
	630	690	40	130	110/120	J300250	PC33UD69V630A	6,9URD33D08A0630
	700	690	55	300	115/125	K300251	PC33UD69V700A	6,9URD33D08A0700
	800	690	95	490	120/130	L300252	PC33UD69V800A	6,9URD33D08A0800
	900	690	135	700	120/135	M300253	PC33UD69V900A	6,9URD33D08A0900
	1000	690	170	900	135/155	N300254	PC33UD69V1000A	6,9URD33D08A1000
	1100	690	240	1260	135/160	P300255	PC33UD69V1100A	6,9URD33D08A1100
	1250	660	350	1850	150/180	Q300256	PC33UD69V1250A	6,9URD33D08A1250
	1400	660	480	2500	160/200	R300257	PC33UD69V1400A	6,9URD33D08A1400
	1500	600	500		220	M235071	PC33UD60V1500A	6URD33D08A1500
	1600	600	555		210/240	X301803	PC33UD60V1600A	6URD33D08A1600
	1800	600	720		225/260	E301971	PC33UD60V1800A	6URD33D08A1800

** Watts loss data is published for both blade and tapped style mounting configurations. When two watts loss values are shown this represents tapped/blade values respectively.

690/700 Volt PSC Square Body

690 Volt European/IEC Style Ratings and Application Data, EF Mounting

Body Size	Amp Rating	Rated Voltage	Melting I ² t (A ² s x 10 ³)	Total I ² t @ 660VAC (A ² s x 10 ³)	** Watts Loss @ Rated Current (W)	Catalog No	New Description	Old Description
30	50	690	0.116	0.68	9	R300372	PC30UD69V50EF	6,9URD30EF0050
	63	690	0.2	1.09	14	H300088	PC30UD69V63EF	6,9URD30EF0063
	80	690	0.33	1.75	19	J300089	PC30UD69V80EF	6,9URD30EF0080
	100	690	0.47	2.5	26	K300090	PC30UD69V100EF	6,9URD30EF0100
	125	690	0.85	4.5	30	L300091	PC30UD69V125EF	6,9URD30EF0125
	160	690	1.6	8.5	37	M300092	PC30UD69V160EF	6,9URD30EF0160
	200	690	3	15.5	42/43	N300093	PC30UD69V200EF	6,9URD30EF0200
	250	690	5.8	30	48/50	P300094	PC30UD69V250EF	6,9URD30EF0250
	315	690	12	62	53/55	Q300095	PC30UD69V315EF	6,9URD30EF0315
	350	690	15.5	80	57/60	R300096	PC30UD69V350EF	6,9URD30EF0350
	400	690	23	120	60/65	S300097	PC30UD69V400EF	6,9URD30EF0400
31	200	690	2.6	14	45	C300037	PC31UD69V200EF	6,9URD31EF0200
	250	690	4.7	25	52	D300038	PC31UD69V250EF	6,9URD31EF0250
	315	690	7.5	40	65	E300039	PC31UD69V315EF	6,9URD31EF0315
	350	690	10.5	55	67	N300047	PC31UD69V350EF	6,9URD31EF0350
	400	690	19	100	68	F300040	PC31UD69V400EF	6,9URD31EF0400
	450	690	26.5	140	70	G300041	PC31UD69V450EF	6,9URD31EF0450
	500	690	37	195	70/72	H300042	PC31UD69V500EF	6,9URD31EF0500
	550	690	52	280	70/75	J300043	PC31UD69V550EF	6,9URD31EF0550
	630	690	75	390	75/85	K300044	PC31UD69V630EF	6,9URD31EF0630
700	690	95	490	85/95	L300045	PC31UD69V700EF	6,9URD31EF0700	
32	400	690	15	80	72/75	V300168	PC32UD69V400EF	6,9URD32EF0400
	450	690	22	115	77/80	W300169	PC32UD69V450EF	6,9URD32EF0450
	500	690	28	145	85/90	X300170	PC32UD69V500EF	6,9URD32EF0500
	550	690	37	195	90/95	Y300171	PC32UD69V550EF	6,9URD32EF0550
	630	690	54	280	95/105	Z300172	PC32UD69V630EF	6,9URD32EF0630
	700	690	76	400	100/110	A300173	PC32UD69V700EF	6,9URD32EF0700
	800	690	115	600	110/120	B300174	PC32UD69V800EF	6,9URD32EF0800
	900	660	170	900	110/125	C300175	PC32UD69V900EF	6,9URD32EF0900
	1000	660	240	1250	115/135	D300176	PC32UD69V1000EF	6,9URD32EF1000
33	500	690	19	100	105	Z300218	PC33UD69V500EF	6,9URD33EF0500
	550	690	27	140	105/110	A300219	PC33UD69V550EF	6,9URD33EF0550
	630	690	40	130	110/120	B300220	PC33UD69V630EF	6,9URD33EF0630
	700	690	55	300	115/125	C300221	PC33UD69V700EF	6,9URD33EF0700
	800	690	95	490	120/130	D300222	PC33UD69V800EF	6,9URD33EF0800
	900	690	135	700	120/135	E300223	PC33UD69V900EF	6,9URD33EF0900
	1000	690	170	900	135/155	F300224	PC33UD69V1000EF	6,9URD33EF1000
	1100	690	240	1260	135/160	G300225	PC33UD69V1100EF	6,9URD33EF1100
	1250	660	350	1850	150/180	H300226	PC33UD69V1250EF	6,9URD33EF1250
1400	660	480	2500	160/200	J300227	PC33UD69V1400EF	6,9URD33EF1400	

** Watts loss data is published for both blade and tapped style mounting configurations. When two watts loss values are shown this represents tapped/blade values respectively.

690/700 Volt PSC Square Body

690 Volt European/IEC Style Ratings and Application Data, TTF Mounting

Body Size	Amp Rating	Rated Voltage	Melting I ² t (A ² s x 10 ³)	Total I ² t @ 660VAC (A ² s x 10 ³)	** Watts Loss @ Rated Current (W)	Catalog No	New Description	Old Description
30	50	690	0.116	0.68	9	S300373C	PC30UD69V50TF	6,9URD30TTF0050
	63	690	0.2	1.09	14	M300000C	PC30UD69V63TF	6,9URD30TTF0063
	80	690	0.33	1.75	19	S300051C	PC30UD69V80TF	6,9URD30TTF0080
	100	690	0.47	2.5	26	T300052C	PC30UD69V100TF	6,9URD30TTF0100
	125	690	0.85	4.5	30	V300053C	PC30UD69V125TF	6,9URD30TTF0125
	160	690	1.6	8.5	37	W300054C	PC30UD69V160TF	6,9URD30TTF0160
	200	690	3	15.5	42/43	X300055C	PC30UD69V200TF	6,9URD30TTF0200
	250	690	5.8	30	48/50	Y300056C	PC30UD69V250TF	6,9URD30TTF0250
	315	690	12	62	53/55	Z300057C	PC30UD69V315TF	6,9URD30TTF0315
	350	690	15.5	80	57/60	A300058C	PC30UD69V350TF	6,9URD30TTF0350
	400	690	23	120	60/65	B300059C	PC30UD69V400TF	6,9URD30TTF0400
	450	660	26	153	80/88	V300398C	PC30UD69V450TF	6,9URD30TTF0450
	500	660	41	245	80/88	W300399C	PC30UD69V500TF	6,9URD30TTF0500
550	660	52	305	80/90	X300400C	PC30UD69V550TF	6,9URD30TTF0550	
31	200	690	2.6	14	45	N300001C	PC31UD69V200TF	6,9URD31TTF0200
	250	690	4.7	25	52	P300002C	PC31UD69V250TF	6,9URD31TTF0250
	315	690	7.5	40	65	Q300003C	PC31UD69V315TF	6,9URD31TTF0315
	350	690	10.5	55	67	M300046C	PC31UD69V350TF	6,9URD31TTF0350
	400	690	19	100	68	R300004C	PC31UD69V400TF	6,9URD31TTF0400
	450	690	26.5	140	70	S300005C	PC31UD69V450TF	6,9URD31TTF0450
	500	690	37	195	70/72	T300006C	PC31UD69V500TF	6,9URD31TTF0500
	550	690	52	280	70/75	V300007C	PC31UD69V550TF	6,9URD31TTF0550
	630	690	75	390	75/85	W300008C	PC31UD69V630TF	6,9URD31TTF0630
	700	690	95	490	85/95	X300009C	PC31UD69V700TF	6,9URD31TTF0700
800	660	140	815	105/120	Y300401C	PC31UD69V800TF	6,9URD31TTF0800	
32	400	690	15	80	72/75	H300065C	PC32UD69V400TF	6,9URD32TTF0400
	450	690	22	115	77/80	J300066C	PC32UD69V450TF	6,9URD32TTF0450
	500	690	28	145	85/90	K300067C	PC32UD69V500TF	6,9URD32TTF0500
	550	690	37	195	90/95	L300068C	PC32UD69V550TF	6,9URD32TTF0550
	630	690	54	280	95/105	M300069C	PC32UD69V630TF	6,9URD32TTF0630
	700	690	76	400	100/110	N300070C	PC32UD69V700TF	6,9URD32TTF0700
	800	690	115	600	110/120	P300071C	PC32UD69V800TF	6,9URD32TTF0800
	900	660	170	900	110/125	Q300072C	PC32UD69V900TF	6,9URD32TTF0900
	1000	660	240	1250	115/135	S300074C	PC32UD69V1000TF	6,9URD32TTF1000
	1100	600	270	1620	140/165	M300759C	PC32UD60V1100TF	6URD32TTF1100
1250	500	410	1940	150/180	P301060C	PC32UD55V1250TF	5,5URD32TTF1250	
33	500	690	19	100	105	V300076C	PC33UD69V500TF	6,9URD33TTF0500
	550	690	27	140	105/110	W300077C	PC33UD69V550TF	6,9URD33TTF0550
	630	690	40	130	110/120	X300078C	PC33UD69V630TF	6,9URD33TTF0630
	700	690	55	300	115/125	Y300079C	PC33UD69V700TF	6,9URD33TTF0700
	800	690	95	490	120/130	Z300080C	PC33UD69V800TF	6,9URD33TTF0800
	900	690	135	700	120/135	A300081C	PC33UD69V900TF	6,9URD33TTF0900
	1000	690	170	900	135/155	B300082C	PC33UD69V1000TF	6,9URD33TTF1000
	1100	690	240	1260	135/160	C300083C	PC33UD69V1100TF	6,9URD33TTF1100
	1250	660	350	1850	150/180	D300084C	PC33UD69V1250TF	6,9URD33TTF1250
	1400	660	480	2500	160/200	E300085C	PC33UD69V1400TF	6,9URD33TTF1400
	1500	600	500		220	Y300585C	PC33UD60V1500TF	6URD33TTF1500
	1600	600	555		210/240	Z300586C	PC33UD60V1600TF	6URD33TTF1600
	1800	600	720		225/260	A300587C	PC33UD60V1800TF	6URD33TTF1800
	2000	550	950		250/290	B300588C	PC33UD55V2000TF	5,5URD33TTF2000
	2250	500	1250		280/330	K300757C	PC33UD50V2250TF	5URD33TTF2250
2500	450	1870		280/330	L300758C	PC33UD45V2500TF	4,5URD33TTF2500	

** Watts loss data is published for both blade and tapped style mounting configurations. When two watts loss values are shown this represents tapped/blade values respectively.

690/700 Volt PSC Square Body

700 Volt North American Style Ratings and Application Data, LI Mounting

Body Size	Amp Rating	Rated Voltage	Melting I ² t (A ² s x 10 ³)	Total I ² t @ 660VAC (A ² s x 10 ³)	** Watts Loss @ Rated Current (W)	Catalog No	New Description	Old Description
30	63	700	0.2	1.2	14	M300138	A070UD30LI63	A070URD30LI0063
	80	700	0.33	1.9	19	N300139	A070UD30LI080	A070URD30LI0080
	100	700	0.47	2.7	26	P300140	A070UD30LI100	A070URD30LI0100
	125	700	0.85	4.9	30	Q300141	A070UD30LI125	A070URD30LI0125
	160	700	1.6	9.2	37	R300142	A070UD30LI160	A070URD30LI0160
	200	700	3	16.7	42/43	S300143	A070UD30LI200	A070URD30LI0200
	250	700	5.8	32.4	48/50	T300144	A070UD30LI250	A070URD30LI0250
	315	700	12	67	53/55	V300145	A070UD30LI315	A070URD30LI0315
	350	700	15.5	86	57/60	W300146	A070UD30LI350	A070URD30LI0350
	400	700	23	130	60/65	X300147	A070UD30LI400	A070URD30LI0400
	450	700	26	165	80/88	K300527	A070UD30LI450	A070URD30LI0450
	500	700	41	264	80/88	L300528	A070UD30LI500	A070URD30LI0500
	550	700	52	330	80/90	M300529	A070UD30LI550	A070URD30LI0550
31	200	700	2.5	14.6	45	V300697	A070UD31LI200	A070URD31LI0200
	250	700	4.7	27	52	W300698	A070UD31LI250	A070URD31LI0250
	315	700	7.5	43	65	X300699	A070UD31LI315	A070URD31LI0315
	350	700	10.5	59	67	Y300700	A070UD31LI350	A070URD31LI0350
	400	700	19	110	68	Z300701	A070UD31LI400	A070URD31LI0400
	450	700	26.5	150	70	A300702	A070UD31LI450	A070URD31LI0450
	500	700	37	210	70/72	B300703	A070UD31LI500	A070URD31LI0500
	550	700	52	300	70/75	C300704	A070UD31LI550	A070URD31LI0550
	630	700	75	421	75/85	D300705	A070UD31LI630	A070URD31LI0630
	700	700	95	530	85/95	E300706	A070UD31LI700	A070URD31LI0700
32	400	700	15	86	72/75	F300707	A070UD31LI800	A070URD31LI0800
	450	700	22	124	77/80	J300204	A070UD32LI400	A070URD32LI0400
	500	700	28	157	85/90	K300205	A070UD32LI450	A070URD32LI0450
	550	700	37	211	90/95	L300206	A070UD32LI500	A070URD32LI0500
	630	700	54	302	95/105	M300207	A070UD32LI550	A070URD32LI0550
	700	700	76	432	100/110	N300208	A070UD32LI630	A070URD32LI0630
	800	700	115	648	110/120	P300209	A070UD32LI700	A070URD32LI0700
	900	700	170	972	110/125	Q300210	A070UD32LI800	A070URD32LI0800
	1000	700	240	1350	110/125	R300211	A070UD32LI900	A070URD32LI0900
	1100	700	240	1350	115/135	S300212	A070UD32LI1000	A070URD32LI1000
	1100	650	270	1620	140/165	T300212	A070UD32LI1100	A070URD32LI1100
	1250	600	410	2100	150/180	B301071	A065UD32LI1100	A065URD32LI1100
	1400	600	410	2100	150/180	C301072	A060UD32LI1250	A060URD32LI1250
1400	550	555	2600	160/190	D301073	A055UD32LI1400	A055URD32LI1400	
1600	550	870	4000	165/195	E301074	A055UD32LI1600	A055URD32LI1600	
1800	500	1050	4400	195/330	F301075	A050UD32LI1800	A050URD32LI1800	
33	500	700	19	108	105	F300707	A070UD31LI800	A070URD31LI0800
	550	700	19	108	105	K300228	A070UD33LI500	A070URD33LI0500
	550	700	27	151	105/110	L300229	A070UD33LI550	A070URD33LI0550
	630	700	40	227	110/120	M300230	A070UD33LI630	A070URD33LI0630
	700	700	55	324	115/125	N300231	A070UD33LI700	A070URD33LI0700
	800	700	95	529	120/130	P300232	A070UD33LI800	A070URD33LI0800
	900	700	135	760	120/135	Q300233	A070UD33LI900	A070URD33LI0900
	1000	700	170	970	135/155	R300234	A070UD33LI1000	A070URD33LI1000
	1100	700	240	1360	135/160	S300235	A070UD33LI1100	A070URD33LI1100
	1250	700	350	2000	150/180	T300236	A070UD33LI1250	A070URD33LI1250
	1400	700	480	2700	160/200	V300237	A070UD33LI1400	A070URD33LI1400
	1600	650	555	3250	210/240	W300237	A065UD33LI1600	A065URD33LI1600
	1800	650	720	4330	225/260	X301076	A065UD33LI1800	A065URD33LI1800
	2000	600	950	5000	250/290	Y301077	A065UD33LI1800	A065URD33LI1800
	2250	550	1250	5900	280/330	Z301078	A060UD33LI2000	A060URD33LI2000
2500	500	1870	7600	280/330	A301078	A060UD33LI2000	A060URD33LI2000	
					K301079	A055UD33LI2250	A055URD33LI2250	
					L301080	A050UD33LI2500	A050URD33LI2500	

** Watts loss data is published for both blade and tapped style mounting configurations. When two watts loss values are shown this represents tapped/blade values respectively.

690/700 Volt PSC Square Body

700 Volt North American Style Ratings and Application Data, KI Mounting

Body Size	Amp Rating	Rated Voltage	Melting I ² t (A ² s x 10 ³)	Total I ² t @ 660VAC (A ² s x 10 ³)	** Watts Loss @ Rated Current (W)	Catalog No	New Description	Old Description
30	63	700	0.2	11.2	14	B300128	A070UD30KI63	A070URD30KI0063
	80	700	0.33	1.9	19	C300129	A070UD30KI80	A070URD30KI0080
	100	700	0.47	2.7	26	D300130	A070UD30KI100	A070URD30KI0100
	125	700	0.85	4.9	30	E300131	A070UD30KI125	A070URD30KI0125
	160	700	1.6	9.2	37	F300132	A070UD30KI160	A070URD30KI0160
	200	700	3	16.7	42/43	G300133	A070UD30KI200	A070URD30KI0200
	250	700	5.8	32.4	48/50	H300134	A070UD30KI250	A070URD30KI0250
	315	700	12	67	53/55	J300135	A070UD30KI315	A070URD30KI0315
	350	700	15.5	86	57/60	K300136	A070UD30KI350	A070URD30KI0350
	400	700	23	130	60/65	L300137	A070UD30KI400	A070URD30KI0400
	450	700	26	165	80/88	T301064	A070UD30KI450	A070URD30KI0450
	500	700	41	264	80/88	V301065	A070UD30KI500	A070URD30KI0500
550	700	52	330	80/90	W301066	A070UD30KI550	A070URD30KI0550	
31	200	700	2.5	14.6	45	S300028	A070UD31KI200	A070URD31KI0200
	250	700	4.7	27	52	T300029	A070UD31KI250	A070URD31KI0250
	315	700	7.5	43	65	V300030	A070UD31KI315	A070URD31KI0315
	350	700	10.5	59	67	R300050	A070UD31KI350	A070URD31KI0350
	400	700	19	110	68	W300031	A070UD31KI400	A070URD31KI0400
	450	700	26.5	150	70	X300032	A070UD31KI450	A070URD31KI0450
	500	700	37	210	70/72	Y300033	A070UD31KI500	A070URD31KI0500
	550	700	52	300	70/75	Z300034	A070UD31KI550	A070URD31KI0550
	630	700	75	421	75/85	A300035	A070UD31KI630	A070URD31KI0630
	700	700	95	530	85/95	B300036	A070UD31KI700	A070URD31KI0700
800	700	140	880	105/120	A301070	A070UD31KI800	A070URD31KI0800	
32	400	700	15	86	72/75	Z300195	A070UD32KI400	A070URD32KI0400
	450	700	22	124	77/80	A300196	A070UD32KI450	A070URD32KI0450
	500	700	28	157	85/90	B300197	A070UD32KI500	A070URD32KI0500
	550	700	37	211	90/95	C300198	A070UD32KI550	A070URD32KI0550
	630	700	54	302	85/105	D300199	A070UD32KI630	A070URD32KI0630
	700	700	76	432	100/110	E300200	A070UD32KI700	A070URD32KI0700
	800	700	115	648	110/120	F300201	A070UD32KI800	A070URD32KI0800
	900	700	170	972	110/125	G300202	A070UD32KI900	A070URD32KI0900
	1000	700	240	1350	115/135	H300203	A070UD32KI1000	A070URD32KI1000
33	500	700	19	108	105	W300238	A070UD33KI500	A070URD33KI0500
	550	700	27	151	105/110	X300239	A070UD33KI550	A070URD33KI0550
	630	700	40	227	110/120	Y300240	A070UD33KI630	A070URD33KI0630
	700	700	55	324	115/125	Z300241	A070UD33KI700	A070URD33KI0700
	800	700	95	529	120/130	A300242	A070UD33KI800	A070URD33KI0800
	900	700	135	760	120/135	B300243	A070UD33KI900	A070URD33KI0900
	1000	700	170	970	135/155	C300244	A070UD33KI1000	A070URD33KI1000
	1100	700	240	1360	135/160	D300245	A070UD33KI1100	A070URD33KI1100
	1250	700	350	2000	150/180	E300246	A070UD33KI1250	A070URD33KI1250
	1400	700	480	2700	160/200	F300247	A070UD33KI1400	A070URD33KI1400
1600	650	555	3250	210/240	E302063	A065UD33KI1600	A065URD33KI1600	

** Watts loss data is published for both blade and tapped style mounting configurations. When two watts loss values are shown this represents tapped/blade values respectively.

690/700 Volt PSC Square Body

700 Volt North American Style Ratings and Application Data, TTI Mounting

Body Size	Amp Rating	Rated Voltage	Melting I ² t (A ² s x 10 ³)	Total I ² t @ 660VAC (A ² s x 10 ³)	** Watts Loss @ Rated Current (W)	Catalog No	New Description	Old Description
30	63	700	0.2	1.2	14	A301967	A070UD30TTI63	A070URD30TTI0063
	80	700	0.33	1.9	19	V301962	A070UD30TTI80	A070URD30TTI0080
	100	700	0.47	2.7	26	W300744	A070UD30TTI100	A070URD30TTI0100
	125	700	0.85	4.9	30	G300708	A070UD30TTI125	A070URD30TTI0125
	160	700	1.6	9.2	37	N300576	A070UD30TTI160	A070URD30TTI0160
	200	700	3	16.7	42/43	P300577	A070UD30TTI200	A070URD30TTI0200
	250	700	5.8	32.4	48/50	Q300578	A070UD30TTI250	A070URD30TTI0250
	315	700	12	67	53/55	R300579	A070UD30TTI315	A070URD30TTI0315
	350	700	15.5	86	57/60	S300580	A070UD30TTI350	A070URD30TTI0350
	400	700	23	130	60/65	T300581	A070UD30TTI400	A070URD30TTI0400
	450	700	26	165	80/88	V300582	A070UD30TTI450	A070URD30TTI0450
	500	700	41	264	80/88	W300583	A070UD30TTI500	A070URD30TTI0500
	550	700	52	330	80/90	X300584	A070UD30TTI550	A070URD30TTI0550
	31	200	700	2.5	14.6	45	A300472	A070UD31TTI200
250		700	4.7	27	52	B300473	A070UD31TTI250	A070URD31TTI0250
315		700	7.5	43	65	C300474	A070UD31TTI315	A070URD31TTI0315
350		700	10.5	59	67	D300475	A070UD31TTI350	A070URD31TTI0350
400		700	19	110	68	E300476	A070UD31TTI400	A070URD31TTI0400
450		700	26.5	150	70	F300477	A070UD31TTI450	A070URD31TTI0450
500		700	37	210	70/72	G300478	A070UD31TTI500	A070URD31TTI0500
550		700	52	300	70/75	H300479	A070UD31TTI550	A070URD31TTI0550
630		700	75	421	75/85	J300480	A070UD31TTI630	A070URD31TTI0630
700		700	95	530	85/95	K300481	A070UD31TTI700	A070URD31TTI0700
800	700	140	880	105/120	L300482	A070UD31TTI800	A070URD31TTI0800	
32	400	700	15	86	72/75	Q300463	A070UD32TTI400	A070URD32TTI0400
	450	700	22	124	77/80	N300461	A070UD32TTI450	A070URD32TTI0450
	500	700	28	157	85/90	P300462	A070UD32TTI500	A070URD32TTI0500
	550	700	37	211	90/95	R300464	A070UD32TTI550	A070URD32TTI0550
	630	700	54	302	95/105	S300465	A070UD32TTI630	A070URD32TTI0630
	700	700	76	432	100/110	T300466	A070UD32TTI700	A070URD32TTI0700
	800	700	115	648	110/120	V300467	A070UD32TTI800	A070URD32TTI0800
	900	700	170	972	110/125	W300468	A070UD32TTI900	A070URD32TTI0900
	1000	700	240	1350	115/135	X300469	A070UD32TTI1000	A070URD32TTI1000
	1100	650	270	1620	140/165	M301081	A065UD32TTI1100	A065URD32TTI1100
	1250	600	410	2100	150/180	N301082	A060UD32TTI1250	A060URD32TTI1250
	1400	550	555	2600	160/190	P301083	A055UD32TTI1400	A055URD32TTI1400
1600	550	870	4000	165/195	Q301084	A055UD32TTI1600	A055URD32TTI1600	
1800	500	1050	4400	195/330	R301085	A050UD32TTI1800	A050URD32TTI1800	
33	500	700	19	108	105	X300446	A070UD33TTI500	A070URD33TTI0500
	550	700	27	151	105/110	Y300447	A070UD33TTI550	A070URD33TTI0550
	630	700	40	227	110/120	Z300448	A070UD33TTI630	A070URD33TTI0630
	700	700	55	324	115/125	A300449	A070UD33TTI700	A070URD33TTI0700
	800	700	95	529	120/130	T300443	A070UD33TTI800	A070URD33TTI0800
	900	700	135	760	120/135	B300450	A070UD33TTI900	A070URD33TTI0900
	1000	700	170	970	135/155	C300451	A070UD33TTI1000	A070URD33TTI1000
	1100	700	240	1360	135/160	D300452	A070UD33TTI1100	A070URD33TTI1100
	1250	700	350	2000	150/180	E300453	A070UD33TTI1250	A070URD33TTI1250
	1400	700	480	2700	160/200	F300454	A070UD33TTI1400	A070URD33TTI1400
	1600	650	555	3250	210/240	S301086	A065UD33TTI1600	A065URD33TTI1600
	1800	650	720	4330	225/260	T301087	A065UD33TTI1800	A065URD33TTI1800
	2000	600	950	5000	250/290	V301088	A060UD33TTI2000	A060URD33TTI2000
	2250	550	1250	5900	280/330	W301089	A055UD33TTI2250	A055URD33TTI2250
	2500	500	1870	7600	280/330	Y300838	A050UD33TTI2500	A050URD33TTI2500

** Watts loss data is published for both blade and tapped style mounting configurations. When two watts loss values are shown this represents tapped/blade values respectively.

690/700 Volt PSC Square Body

2x32, 2x33

Size	Catalog No	New Description	Old Description	Weight (g)
2 X 32	T300213A	PC232UD69V10CTF	6,9URD232TTF1000	1240
	V300214A	PC232UD69V13CTF	6,9URD232TTF1250	
	G300087A	PC232UD69V14CTF	6,9URD232TTF1400	
	W300215A	PC232UD69V16CTD	6,9URD232TDF1600	3300
	X300216A	PC232UD69V18CTD	6,9URD232TDF1800	
	Y300217A	PC232UD69V20CTD	6,9URD232TDF2000	
	D301993A	PC232UD55V22CTD	5,5URD232TDF2200	
2 X 33	D300268A	PC233UD69V13CTF	6,9URD233TTF1250	1900
	E300269A	PC233UD69V14CTF	6,9URD233TTF1400	
	F300270A	PC233UD69V16CTF	6,9URD233TTF1600	
	B300427A	PC36UD69V18CP11	6,9URD233PLAF1800	2000
	R302235A	PC36UD60V20CP11	6URD233PLAF2000	
	Q302234A	PC36UD60V22CP11	6URD233PLAF2200	
	P302233A	PC36UD60V25CP11	6URD233PLAF2500	
	N302232A	PC36UD60V28CP11	6URD233PLAF2800	
	L301977A	PC36UD55V30CP11	5,5URD233PLAF3000	
	M301978A	PC36UD55V32CP11	5,5URD233PLAF3200	
	N301979A	PC36UD50V36CP11	5URD233PLAF3600	
	P301980A	PC36UD50V40CP11	5URD233PLAF4000	
	Q301981A	PC36UD45V45CP11	4,5URD233PLAF4500	
	R301982A	PC36UD40V50CP11	4URD233PLAF5000	

Dimensions (mm)

Size	A	B	C	D	E	F	G	H	J	K	d	e	L	M	N
2x32 TT	60	138,5	172	11	67,6	66,5	100	35	61	40	M 10	4	107,5	48	72
2x33 TT	74,5	167	200	13	67,6	81	114	50	80	40	M 12	4	107,5	54	86
2x32 TD	65,5	147	182	-	91,5	-	-	30	-	60	M 10	12	140	-	-
2x33 PLAF	75	171,5	207	-	55,5	-	115	40	-	71	M 10	15	81	-	-

