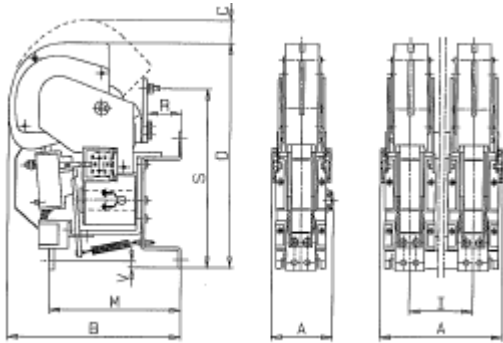


LTNS-FS 1000/1250 CONTACTOR FOR RAILWAY APPLICATION



MECHANICAL CHARACTERISTICS

LT CONTACTOR by Microelettrica

TYPE	POLES	MAX. AUX. BLOCKS TYPE	WEIGHT [KG]	OPERATION TIME		OVERALL DIMENSIONS				CABLE TERMINALS				
				CLOSING [ms]	OPENING [ms]	A [mm]	B [mm]	C [mm]	D [mm]	R [mm]	S [mm]	V [mm]	M [mm]	I [mm]
LTNS	N°	SK11	[KG]	[ms]	[ms]	[mm]	[mm]	[mm]	[mm]	[mm]	[mm]	[mm]	[mm]	[mm]
1000	1	4	22	240	30	125	350	50	459	69.5	362	11.5	267	-
	2	4	40	280	50	230	350	50	459	69.5	362	11.5	267	110
	3	4	58	280	50	340	350	50	459	69.5	362	11.5	267	110
1250	1	4	24	240	30	125	350	50	459	69.5	362	11.5	267	-
	2	4	43	280	50	230	350	50	459	69.5	362	11.5	267	110
	3	4	60	280	50	340	350	50	459	69.5	362	11.5	267	110

ELECTRICAL CHARACTERISTICS

TYPE	MAX V [V]	ITH [A]	MAKING CAPACITY Ich [A]	D.C. BREAKING CAPACITY [A]						A.C. BREAKING CAPACITY [A]			MAX. OPERATIONAL CURRENT FOR A.C. AND D.C. MOTORS		
				L/R = 15ms						COS φ = 0.5					
LTNS	[V]	[A]	[A]	440V		750V		1000V		440V	750V	1000V	A.C. 2-3	D.C. 2-3	D.C. 4.5
				1P	2P	1P	2P	1P	2P						
1000	1000	1100	16000	4000	7000	2500	5000	1800	3500	10000	6000	5000	750	750	600
1250	1000	1300	20000	5000	9000	3500	7000	2000	4000	12500	8000	6000	900	900	800

MOUNTING DIMENSIONS

TYPE	POLES	a	b	c	d	e	f	g	h	MOUNTING PLATE
LTNS										
1000/1250	1	275	100	15	70	15	70	15	11	
	2	275	210	15	180	15	180	15	11	
	3	275	320	15	190	15	290	15	11	

CLEARANCES FROM ADJACENT PARTS

TYPE	METALLIC EARTHED		INSULATED		MOUNTING POSITION**
	X	Y	X	Y	
LTNS	X	Y	X	Y	
1000	180	180	120	120	
1250	200	200	120	120	

* Clearances for nominal breaking capacity

** For horizontal mounting contact our technical department

AUXILIARY CONTACTS RAINGS FOR 10⁶ OPERATIONS

UTILIZATION CATEGORY	AC11	V-	48	110	220	380	AUXILIARY CONTACTS	
		I [A]	8	6	5	3	LEFT	RIGHT
UTILIZATION CATEGORY	DC11	V=	24	48	110	250		
RESISTIVE LOAD	-	I [A]	8	6	5	3		
INDUCTIVE LOAD	15 ms	I [A]	6	4	3	1.5		
INDUCTIVE LOAD	300 ms	I [A]	2.5	1.5	0.8	0.25		

COIL CONSUMPTION FOR LTN V/S CONTACTORS

TYPE	1000 / 1250		
POLES	1	2	3
[W]	60	80	150

MINIMUM MOUNTING DISTANCES

