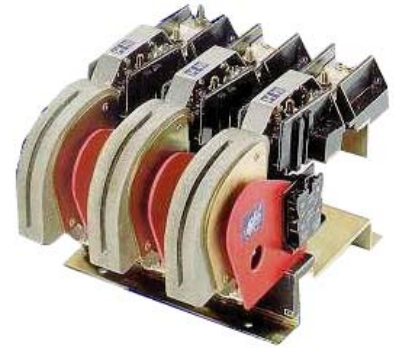
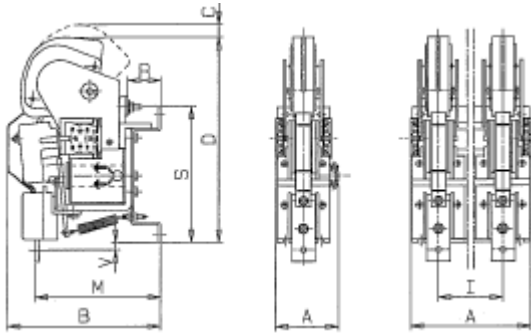


LTNS-FS 320/450 CONTACTOR FOR RAILWAY APPLICATION



MECHANICAL CHARACTERISTICS

LTNS-FS CONTACTOR by Microelettrica

TYPE	POLES	MAX. AUX. BLOCKS TYPE	WEIGHT	OPERATION TIME		OVERALL DIMENSIONS				CABLE TERMINALS				
				CLOSING	OPENING	A	B	C	D	R	S	V	M	I
LTNS	N°	SK11	[KG]	[ms]	[ms]	[mm]	[mm]	[mm]	[mm]	[mm]	[mm]	[mm]	[mm]	[mm]
320	1	4	12	160	35	105	260	25	350	55	232	13	213	-
	2	4	17	160	35	186	260	25	350	55	232	13	213	91
	3	4	24	160	35	277	260	25	350	55	232	13	213	91
450	1	4	13	160	35	105	260	20	360	55	232	13	213	-
	2	4	18	160	35	186	260	20	360	55	232	13	213	91
	3	4	25	160	35	277	260	20	360	55	232	13	213	91

ELECTRICAL CHARACTERISTICS

TYPE	MAX V	ITH	MAKING CAPACITY	D.C. BREAKING CAPACITY [A]						A.C. BREAKING CAPACITY [A]			MAX. OPERATIONAL CURRENT FOR A.C. AND D.C. MOTORS		
				L/R = 15ms						COS φ = 0.5					
				440V		750V		1000V		440V	750V	1000V	A.C. 2-3	D.C. 2-3	D.C. 4.5
1P	2P	1P	2P	1P	2P	1P	2P								
320	1000	320	7000	800	1500	600	1200	400	800	2500	1800	1200	200	180	160
450	1000	450	8000	1300	2500	1000	1800	600	1200	4000	2500	1800	280	250	200

MOUNTING DIMENSIONS

TYPE	POLES	a	b	c	d	e	f	g	h	MOUNTING PLATE
320/450	1	230	90	15	60	15	60	12,5	9	
	2	230	180	15	150	15	150	12,5	9	
	3	230	272	15	242	15	242	12,5	9	

CLEARANCES FROM ADJACENT PARTS

TYPE	METALLIC EARTHED		INSULATED		MOUNTING POSITION**
	X	Y	X	Y	
LTNS	X	Y	X	Y	
320	100	100	60	60	
450	120	120	80	80	

* Clearances for nominal breaking capacity

** For horizontal mounting contact our technical department

AUXILIARY CONTACTS RAINGS FOR 10⁶ OPERATIONS

UTILIZATION CATEGORY	AC11	V-	48	110	220	380	AUXILIARY CONTACTS	
		I [A]	8	6	5	3	LEFT	RIGHT
UTILIZATION CATEGORY	DC11	V=	24	48	110	250		
RESISTIVE LOAD	-	I [A]	8	6	5	3		
INDUCTIVE LOAD	15 ms	I [A]	6	4	3	1.5		
INDUCTIVE LOAD	300 ms	I [A]	2.5	1.5	0.8	0.25		

COIL CONSUMPTION FOR LTN V/S CONTACTORS

TYPE	320 / 450		
POLES	1	2	3
[W]	40	40	90

MINIMUM MOUNTING DISTANCES

