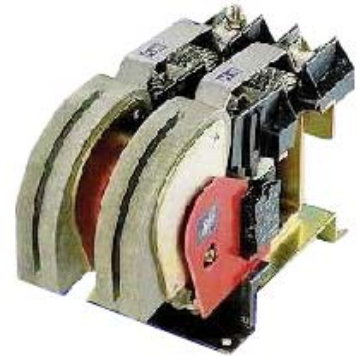
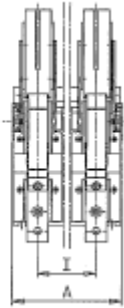
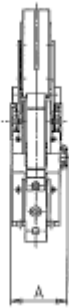
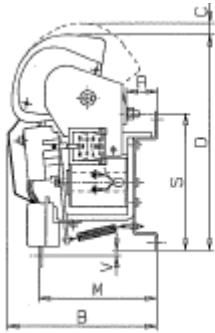


LTNS-FS 650/800 CONTACTOR FOR RAILWAY APPLICATION



MECHANICAL CHARACTERISTICS

LT CONTACTOR by Microelettrica

TYPE	POLES	MAX. AUX. BLOCKS TYPE	WEIGHT [KG]	OPERATION TIME		OVERALL DIMENSIONS				CABLE TERMINALS				
				CLOSING [ms]	OPENING [ms]	A [mm]	B [mm]	C [mm]	D [mm]	R [mm]	S [mm]	V [mm]	M [mm]	I [mm]
LTNS	N°	SK11												
650	1	4	14	210	40	105	280	30	405	58	256	10	222	-
	2	4	25	230	45	186	280	30	405	58	256	10	222	91
	3	4	36	230	45	277	280	30	405	58	256	10	22	91
800	1	4	14	210	40	105	280	30	405	58	256	10	222	-
	2	4	25	230	45	186	280	30	405	58	256	10	222	91
	3	4	36	230	45	277	280	30	405	58	256	10	222	91

ELECTRICAL CHARACTERISTICS

TYPE	MAX V	ITH	MAKING CAPACITY Ich [A]	D.C. BREAKING CAPACITY [A] L/R = 15ms						A.C. BREAKING CAPACITY [A] COS φ = 0.5			MAX. OPERATIONAL CURRENT FOR A.C. AND D.C. MOTORS		
				440V		750V		1000V		440V	750V	1000V	A.C. 2-3	D.C. 2-3	D.C. 4.5
LTNS	[V]	[A]		1P	2P	1P	2P	1P	2P						
650	1000	700	10000	2500	5000	1300	2500	1100	2200	6000	4000	2500	500	500	400
800	1000	900	12000	3500	6000	1600	3200	1500	3000	8000	5000	3500	600	600	500

MOUNTING DIMENSIONS

TYPE	POLES	a	b	c	d	e	f	g	h	MOUNTING PLATE
LTNS										
650/800	1	260	90	15	60	15	60	15	90	
	2	260	180	15	150	15	150	15	11	
	3	260	272	15	242	15	242	15	11	

CLEARANCES FROM ADJACENT PARTS

TYPE	METALLIC EARTHED		INSULATED		MOUNTING POSITION**
	X	Y	X	Y	
LTNS	X	Y	X	Y	
650	160	160	100	100	
800	160	160	100	100	

* Clearances for nominal breaking capacity

** For horizontal mounting contact our technical department

AUXILIARY CONTACTS RAINGS FOR 10⁶ OPERATIONS

UTILIZATION CATEGORY	AC11	V-	48	110	220	380	AUXILIARY CONTACTS	
		I [A]	8	6	5	3	LEFT	RIGHT
UTILIZATION CATEGORY	DC11	V=	24	48	110	250		
RESISTIVE LOAD	-	I [A]	8	6	5	3		
INDUCTIVE LOAD	15 ms	I [A]	6	4	3	1.5		
INDUCTIVE LOAD	300 ms	I [A]	2.5	1.5	0.8	0.25		

COIL CONSUMPTION FOR LTN V/S CONTACTORS

TYPE	650 / 800		
POLES	1	2	3
[W]	50	80	150

MINIMUM MOUNTING DISTANCES

1 POLE	72 15 72 15 86 15 86 20 105 30 105 30 125 30 125													
2 POLES	93 83 114 114 186 186 230 230													
3 POLES	130 130 169 169 277 277 340 340													
	 LTNS 60		 LTNS 125				 LTNS 320 LTNS 450 LTNS 650 LTNS 800				 LTNS 1000 LTNS 1250			