

SIRCO from 30 to 1200 A

Product presentation



SCV30



SCV200U



SC400

Ferraz Shawmut SIRCO disconnect switches are extremely durable, manually operated, non-fused disconnect switches. These heavy-duty switches are designed with the most up-to-date disconnect switch technology available. Designed to suit the UL98 or UL489 standard, the SIRCO gives you a product that “makes and breaks” power circuits on load.

The SIRCO switches are tested and approved for use in the most demanding applications, such as “Service Entrance”. Up to 400A, the switches come with visible blade contacts. A wide array of handles are available to meet OSHA padlocking requirements, NEMA configurations, defeater options and NFPA 79 requirements.

Highlights

- Service entrance rated
- Compact footprints
- Front operated switches
- Side operated switches
- Visible blade contacts up to 400 A
- Line side shrouding supplied with switch
- Defeatable pistol handles automatically re-latch when panel door is closed - no tool necessary to reset latch
- External or direct operation handles
- Flange operation (for use with side operated switches)
- Modular switch concept, special execution, on request (5 pole, mix ratings...)
- Padlockable handles

Applications

- Service entrance or main panel disconnects up to 600 VAC, 1200 A
- “Make and break” power circuit applications on load
- NFPA 79 solutions

Ratings

- 600 VAC, 250 VDC
- 30, 60, 100, 200, 400, 600, 800, 1000, and 1200 amperes
- Up to 200 kA Short Circuit Rating with Fuses

Approvals

- All SIRCO switches meet the requirements of UL and CSA
- UL Listed Guide cUL US LISTED WHTY, File E191605 for UL 98 (ratings from 60 A to 1200 A)
- UL Listed Guide WJAZ, File E258428 for UL489 (rating 30 A)
- CSA 22.2 # 4, class 4652-04, File703166 (ratings from 60A to 1200A)
- CSA 22.2 # 5, class 4652-06, File703166 (ratings 30 A)
- IEC 947-3 CE mark (other IEC ratings up to 5,000A available on request, please consult us)

Front and side operated range from 30 to 400 A



Select a switch

Ampere rating	30	60	100	200	400
Catalog number: 3 pole	SCV30	SCV60U	SCV100U	SCV200U	SCV400U
Catalog number: 4 pole	SCV30SN	SCV604U	SCV1004U	SCV2004U	SCV4004U

Note: SCV30 and SCV30SN are UL489 and CSA 22.2 # 5.

M type selector handle for external front operation



Select a handle

Nema type	IEC	Color	Catalog number				
1, 3R, 12, 4, 4X	IP65	Black	HMSB	-	-	-	-
1, 3R, 12, 4, 4X	IP65	Red / Yellow	HMSR	-	-	-	-

Note: handle is not defeatable and is padlockable in the "OFF" position



Select a shaft

Shaft length (inches / mm)	Catalog number				
7.9 / 200	SM200-5	-	-	-	-
12.6 / 320	SM320-5	-	-	-	-
15.7 / 400	SM400-5	-	-	-	-

S type pistol handle for external front and side operation



Select a handle

Nema type	IEC	Color	Catalog number				
1, 3R, 12	IP54	Black	HSPB	HSPBL	HSPBL	HSPBL	HSPBL
1, 3R, 12	IP54	Red / Yellow	HSPR	HSPRL	HSPRL	HSPRL	HSPRL
1, 3R, 12, 4, 4X	IP65	Black	HSPB4	HSPB4L	HSPB4L	HSPB4L	HSPB4L
1, 3R, 12, 4, 4X	IP65	Red / Yellow	HSPR4	HSPR4L	HSPR4L	HSPR4L	HSPR4L

Note: handle is defeatable and is padlockable in the "OFF" position.



Select a shaft

Shaft length (inches / mm)	Catalog number				
7.9 / 200	SS200-5	SS200-10	SS200-10	SS200-10	SS200-10
12.6 / 320	SS320-5	SS320-10	SS320-10	SS320-10	SS320-10
15.7 / 400	SS400-5	SS400-10	SS400-10	SS400-10	SS400-10
19.7 / 500	-	SS500-10	SS500-10	SS500-10	SS500-10

Pistol handle for direct front operation



Select a handle

Color	Catalog number				
Black	HADB1	This function can be achieved using side operated 60 - 400 A non fusible disconnect switches. (see pg 19)			

Note: for getting auxiliary contact option on SCV30 and SCV30SN when direct handle is installed, please use auxiliary contact block holder ACHCD. HADB1 handle is padlockable in the "OFF" position.

Options for front & side operation



	Catalog number				
Terminal Lugs Kit					
6 lugs per kit - for 3 pole switches	integral	integral	integral	TL200	TL400
8 lugs per kit - for 4 pole switches	integral	integral	integral	TL2004	TL4004
Terminal Shrouds kit ⁽¹⁾					
3-pole (for line or load side)	integral	integral	integral	TS200SC	TS400SC ⁽²⁾
4-pole (for line or load side)	integral	integral	integral	TS2004SC	TS4004SC ⁽²⁾
Auxiliary contact					
Auxiliary contact block holder	ACHD	-	-	-	-
1 N / O, 10A, 600VAC snap-on contact block, A600-Q600	AC3	AC3	AC3	AC3	AC3
1 N / C, 10A, 600VAC snap-on contact block, A600-Q600	AC4	AC4	AC4	AC4	AC4
1 NO + NC side mount contact block, A600-N600 ⁽³⁾	-	AC5	AC5	AC5	AC5
2 NO + NC side mount contact blocks, A600-N600 ⁽³⁾	-	AC6	AC6	AC6	AC6

(1) Line side Shrouding supplied as standard with switch.

(2) As replacement part (two Terminal Screens supplied as standard with switch).

(3) Two auxiliary contact blocks maximum can be side mounted.

Front operated range from 400 to 1200 A



Select a switch

Ampere rating	400	600	800	1000	1200
Catalog number: 3 pole	SC400	SC600	SC800	SC1000	SC1200
Catalog number: 4 pole	SC4004	SC6004	SC8004	SC10004	SC12004

S type pistol handle for front external operation



Select a handle

Nema type	IEC	Color	Catalog number				
1, 3R, 12	IP54	Black	HSPBEL	HSPBEL	HSPBEL	HSPBEL	HSPBEL
1, 3R, 12	IP54	Red / Yellow	HSPREL	HSPREL	HSPREL	HSPREL	HSPREL
1, 3R, 12, 4, 4X	IP65	Black	HSPB4EL	HSPB4EL	HSPB4EL	HSPB4EL	HSPB4EL
1, 3R, 12, 4, 4X	IP65	Red / Yellow	HSPR4EL	HSPR4EL	HSPR4EL	HSPR4EL	HSPR4EL

Note: handle is defeatable and is padlockable in the "OFF" position



Select a handle

Nema type	IEC	Color	Catalog number				
1, 3R, 12, 4, 4X	IP65	Black	HSTB4	HSTB4	HSTB4	HSTB4	HSTB4
1, 3R, 12, 4, 4X	IP65	Red / Yellow	HSTR4	HSTR4	HSTR4	HSTR4	HSTR4

Note: handle is defeatable and is padlockable in the "OFF" position.



Select a shaft

Shaft length (inches / mm)	Catalog number				
7.9 / 200	SS200-15	SS200-15	SS200-15	SS200-15	SS200-15
12.6 / 320	SS320-15	SS320-15	SS320-15	SS320-15	SS320-15
15.7 / 400	SS400-15	SS400-15	SS400-15	SS400-15	SS400-15

Pistol handle for direct front operation



Select a handle

Color	Catalog number				
Black	HADB5	HADB5	HADB5	HADB5	HADB5

Note: handle is padlockable in the "OFF" position.

Options for front & side operation



Select a handle

Color	Catalog number				
Terminal Lugs Kit					
(6 lugs per kit - for 3 pole switches)	TL400	TL600	TL800 ⁽⁴⁾	TL1200	TL1200
(8 lugs per kit - for 4 pole switches)	TL4004	TL6004	TL18004 ⁽⁴⁾	TL12004	TL12004
Terminal Screen ⁽¹⁾					
3-pole (for line or load side)	TS600SC	TS600SC	TS1200SC	TS1200SC	TS1200SC
4-pole(for line or load side)	TS6004SC	TS6004SC	TS12004SC	TS12004SC	TS12004SC
Auxiliary Contacts					
Auxiliary Contacts Holder ⁽²⁾	ACHSC	ACHSC	ACHSC	ACHSC	ACHSC
1 N / O, 10A, 600VAC snap-on contact block, A600-Q600	AC3	AC3	AC3	AC3	AC3
1 N / C, 10A, 600VAC snap-on contact block, A600-Q600	AC4	AC4	AC4	AC4	AC4
Padlocking facility for external operation ⁽³⁾	SWL01	SWL01	SWL01	SWL01	SWL01

(1) Line side Terminal Screen supplied as standard with switch.

(2) ACHSC accommodates up to 4 auxiliary contacts.

(3) Allows to padlock the switch when door of the enclosure is open.

(4) TL1200 or TL12004 also fit if 4 holes is required.

Other handles



Metallic handle UL pending available on request, please consult us

SIRCO & NFPA 79

Front operated range from 30 to 400 A



Select a switch

Ampere rating	30	60	100	200	400
Catalog number: 3 pole	SCV30	SCV60U	SCV100U	SCV200U	SCV400U
Catalog number: 4 pole	SCV30SN	SCV604U	SCV1004U	SCV2004U	SCV4004U

Note: SCV30 and SCV30SN are UL489 and CSA 22.2 # 5.

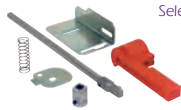
NFPA 79 front operation kit



Select a handle

Nema type	IEC	Color	Catalog number				
1, 3R, 12	IP54	Black	HSPB	HSPBL	HSPBL	HSPBL	HSPBL
1, 3R, 12	IP54	Red / Yellow	HSPR	HSPRL	HSPRL	HSPRL	HSPRL
1, 3R, 12, 4, 4X	IP65	Black	HSPB4	HSPB4L	HSPB4L	HSPB4L	HSPB4L
1, 3R, 12, 4, 4X	IP65	Red / Yellow	HSPR4	HSPR4L	HSPR4L	HSPR4L	HSPR4L

Note: handle is defeatable and is padlockable in the "OFF" position.



Select a kit

	Catalog number				
	HADB6	NFPA791	NFPA791	NFPA791	NFPA791

Note: Allows to operate and padlock the switch when door of the enclosure is open.

For full information on NFPA 79 requirements and on our solution, please consult page 109.

Options for NFPA 79 front operation



	Catalog number				
Terminal Lugs Kit					
(6 lugs per kit - for 3 pole switches)	integral	integral	integral	TL200	TL400
(8 lugs per kit - for 4 pole switches)	integral	integral	integral	TL2004	TL4004
3-pole Terminal Shrouds kit ⁽¹⁾ (for line or load side)	integral	integral	integral	TS200SC	TS400SC ⁽²⁾
4-pole Terminal Shrouds kit ⁽¹⁾ (for line or load side)	integral	integral	integral	TS2004SC	TS4004SC ⁽²⁾
Auxiliary contacts					
1 N / O, 10A, 600VAC snap-on contact block, A600-Q600	AC3	AC3	AC3	AC3	AC3
1 N / C, 10A, 600VAC snap-on contact block, A600-Q600	AC4	AC4	AC4	AC4	AC4
1 NO + NC side mount contact block, A600-N600 ⁽³⁾	-	AC5	AC5	AC5	AC5
2 NO + NC side mount contact blocks, A600-N600 ⁽³⁾	-	AC6	AC6	AC6	AC6

SIRCO & NFPA 79

Side operated range from 60 to 400 A



Select a switch

Ampere rating	60	100	200	400
Catalog number: 3 pole	SCV60SO	SCV100SO	SCV200SO	SCV400SO
Catalog number: 4 pole	SCV604SO	SCV1004SO	SCV2004SO	SCV4004SO

Cable flange operated handle (square D type - class 9422)



Select a handle

NEMA type	IEC	Catalog number			
1, 3, 3R, 4, 12	IP54	HAF-OP1 ⁽¹⁾	HAF-OP1 ⁽¹⁾	HAF-OP1 ⁽¹⁾	HAF-OP1 ⁽¹⁾
4, 4X	IP65	HAF-OP2 ⁽²⁾	HAF-OP2 ⁽²⁾	HAF-OP2 ⁽²⁾	HAF-OP2 ⁽²⁾

Note: handle is defeatable and is padlockable in the "OFF" position.



Mechanism

		Catalog number			
		HAF-MECH	HAF-MECH	HAF-MECH	HAF-MECH



Select a cable

Cable length (inches / mm)	Catalog number			
36 / 914.4	H AFC36	H AFC36	H AFC36	H AFC36
60 / 1 524	H AFC60	H AFC60	H AFC60	H AFC60
120 / 3 048	H AFC120	H AFC120	H AFC120	H AFC120

Note: cable flange operation is for enclosures from 5.75 / 146 to 36 / 990, depending on the cable length.

Rod flange operated handle (square D type - class 9422)



Select a handle

NEMA type	IEC	Catalog number			
1, 3, 3R, 4, 12	IP54	HAF-OP1 ⁽¹⁾	HAF-OP1 ⁽¹⁾	HAF-OP1 ⁽¹⁾	HAF-OP1 ⁽¹⁾
4, 4X	IP65	HAF-OP2 ⁽²⁾	HAF-OP2 ⁽²⁾	HAF-OP2 ⁽²⁾	HAF-OP2 ⁽²⁾

Note: handle is defeatable and is padlockable in the "OFF" position.



Select a rod

Rod length (inches / mm)	Catalog number			
23.6 / 500	HAFR	HAFR	HAFR	HAFR

Note: rod kit is for enclosure depth from 8 / 203 to 24.12 / 613. For smaller depth, please consult us.

Pistol handle for direct side operation (not NFPA 79)



Select a handle

Color	Catalog number			
Black	HADB4	HADB4	HADB4	HADB4

Note: handle is padlockable in the "OFF" position.

Options for flange & direct operation



	Catalog number			
Terminal Lugs Kit				
(6 lugs per kit - for 3 pole switches)	integral	integral	TL200	TL400
(8 lugs per kit - for 4 pole switches)	integral	integral	TL2004	TL4004
3-pole Terminal Shrouds Kit ⁽³⁾ (for line or load side)	integral	integral	TS200SC	TS400SC ⁽⁴⁾
4-pole Terminal Shrouds Kit ⁽³⁾ (for line or load side)	integral	integral	TS2004SC	TS4004SC ⁽⁴⁾
Auxiliary Contacts				
1 NO + NC side mount contact block, A600-N600 ⁽⁵⁾	AC5	AC5	AC5	AC5
2 NO + NC side mount contact blocks, A600-N600 ⁽⁵⁾	AC6	AC6	AC6	AC6

(1) All external metal parts are sheet steel.

(2) All external metal parts are either stainless steel or a chrome-plated non-ferrous die casting.

(3) Line side Shrouding supplied as standard with switch.

(4) As replacement part (two Terminal Screens supplied as standard with switch).

Technical characteristics for front & side operation

UL, cUL and CSA

Catalog number		SCV30 SCV305N	SCV60U / SCV604U SCV605O / SCV6045O	SCV100U / SCV1004U SCV1005O / SCV10045O	SCV200U / SCV2004U SCV2005O / SCV20045O	SCV400U / SCV4004U SCV4005O / SCV40045O
Rating	A	30	60	100	200	400
Operating voltage	V	600	600	600	600	600
Max horsepower rating /						
Max motor FLA current						
Three phase						
208 V		5 / 17.5	15 / 48.5	25 / 78.5	50 / 150	100 / 286
240 V		7.5 / 22	15 / 42	30 / 80	60 / 154	125 / 312
480 V		15 / 21	30 / 40	60 / 77	125 / 156	250 / 302
600 V		20 / 22	50 / 52	75 / 77	150 / 144	350 / 336
DC 125 V		3 / 25 ⁽¹⁾	3 / 25 ⁽¹⁾	7.5 / 58 ⁽¹⁾	15 / 112 ⁽¹⁾	20 / 148 ⁽¹⁾
DC 250 V		5 / 20 ⁽¹⁾	10 / 38 ⁽²⁾	20 / 72 ⁽²⁾	40 / 140 ⁽²⁾	50 / 173 ⁽²⁾
Short circuit rating with fuses (SCCR)	kA	65	200	200	200	200
Branch circuit fuse type		J or CC	J	J	J	J
Max fuse rating (A)		30	60	100	200	400
Dimension 3 pole (front operated switches)						
H	in	4.56	5.87	5.87	8.13	14.31
W	in	3.78	6.69	6.69	9.52	11.93
D	in	2.59	3.89	3.89	3.42	4.92
Shaft size square (front operated switches)						
	in	0.2 x 0.2	0.4 x 0.4	0.4 x 0.4	0.4 x 0.4	0.4 x 0.4
	mm	5 x 5	10 x 10	10 x 10	10 x 10	10 x 10
3-pole switch operating torque (front operation)	lb. in.	21	88	88	106	130
Terminal lugs kit (# lugs per kit)		Integral	Integral	Integral	Optional (6)	Optional (6)
Wire range AWG (# wire holes per lug)		#10-#14 (1)	#3-#10 (1)	#3-#10 (1)	3 / 0-#6 (1)	600 kcmil-#2 (1)
Wire tightening torque	lb. in.	27	58	58	200	500

(1) 2 pole in series.

(2) 3 pole in series.

IEC 947-3

Catalog number		SCV30 SCV305N	SCV60U / SCV604U SCV605O / SCV6045O	SCV100U / SCV1004U SCV1005O / SCV10045O	SCV200U / SCV2004U SCV2005O / SCV20045O	SCV400U / SCV4004U SCV4005O / SCV40045O
Rating	A	32	63	100	200	400
Rated Insulation voltage U _i (V)	V	800	750	750	750	800
Rated impulse voltage (U _{imp})	kV	8	8	8	8	8
Operation current I _e (A)						
400 V AC	AC 22A	32	63	100	200	400
	AC 23A	32	63	100	200	400
690 V AC	AC 22A	32	63	100	200	400
	AC 23A	32	63	100	200	315
Motor Power (kW)						
400 V AC	AC 23A	15	30	51	100	220
500 V AC	AC 23A	18.5	40	63	140	220
690 V AC	AC 23A	25	55	90	185	295
Max. peak let through current (gG)	kA peak	5.5	17.6	17.6	32	40
Connection						
Minimum Cu cable section	mm ²	6	10	25	50	185
Minimum CU busbar section	mm ²	-	-	-	-	-

Technical characteristics for front & side operation

UL, cUL and CSA

Catalog number		SC400 / SC4004	SC600 / SC6004	SC800 / SC8004	SC1000 / SC10004	SC1200 / SC12004
Rating	A	400	600	800	1000	1200
Operating voltage	V	600	600	600	600	600
Max horsepower rating /						
Max motor FLA current						
Three phase						
208 V		125 / 360	150 / 415	200 / 554	200 / 554	200 / 554
240 V		125 / 312	200 / 480	200 / 602	200 / 602	200 / 602
480 V		250 / 302	400 / 447	500 / 590	500 / 590	500 / 590
600 V		350 / 336	350 / 336	500 / 472	500 / 472	500 / 472
DC 125 V		20 / 148 ⁽¹⁾	20 / 148 ⁽¹⁾	-	-	-
DC 250 V		50 / 173 ⁽²⁾	50 / 173 ⁽²⁾	-	-	-
Short circuit rating with fuses (SCCR)	kA	200	200	100	100	100
Branch circuit fuse type		J	J	J	J	J
Max fuse rating (A)		400	600	800	1000	1200
Dimension 3 pole (front operated switches)						
H	in.	12.60	12.60	13	13	13
W	in.	11.02	11.02	14.64	14.64	14.64
D	in.	5.51	5.51	5.51	5.51	5.51
Shaft size square (front operated switches)	in.	0.59 x 0.59	0.59 x 0.59	0.59 x 0.59	0.59 x 0.59	0.59 x 0.59
	mm	15 x 15	15 x 15	15 x 15	15 x 15	15 x 15
3-pole switch operating torque (front operation)	lb. in.	320	320	320	320	320
Terminal lugs kit (#lugs per kit)		optional (6)	optional (6)	optional (6)	optional (12)	optional (12)
Wire range AWG (# wire holes per lug)		600 kcmil-#2 (1)	600 kcmil-#2 (2)	600 kcmil-#2 (3)	600 kcmil-#2 (4)	600 kcmil-#2 (4)
Wire tightening torque	lb. in.	500	500	500	500	500

(1) 2 pole in series.

(2) 3 pole in series

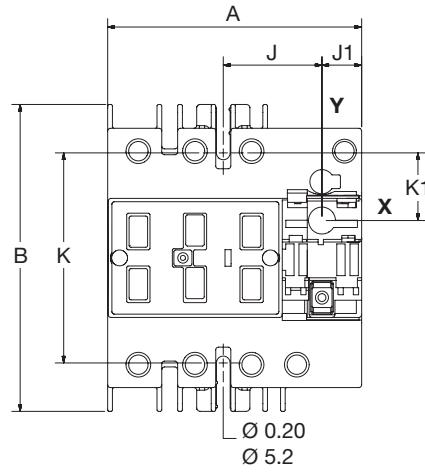
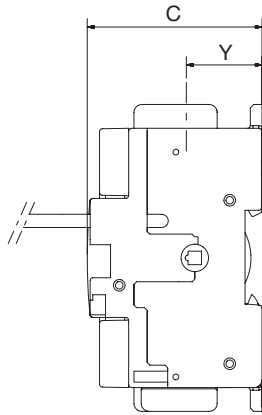
IEC 947-3

Catalog number		SC400 / SC4004	SC600 / SC6004	SC800 / SC8004	SC1000 / SC10004	SC1200 / SC12004
Rating	A	400	600	800	1000	1200
Rated Insulation voltage Ui	V	1000	1000	1000	1000	1000
Rated impulse voltage (Uimp)	kV	12	12	12	12	12
Operation current Ie (A)						
400 V AC	AC 22A	400	630	800	1000	1200
	AC 23A	400	630	800	1000	1000
690 V AC	AC 22A	400	500	630	630	630
	AC 23A	200	200	400	400	400
Motor Power (kW)						
400 V AC	AC 23A	220	355	450	560	560
500 V AC	AC 23A	280	450	560	560	560
690 V AC	AC 23A	185	185	400	400	400
Max. peak let through current (gG)	kA peak	48	48	75	75	75
Connection						
Minimum Cu cable section	mm ²	185	2 x 150	2 x 185	2 x 240	-
Minimum CU busbar section	mm ²	-	2 x 30 x 5	2 x 40 x 5	2 x 50 x 5	2 x 60 x 5

Dimensions (in / mm) for front and side operation

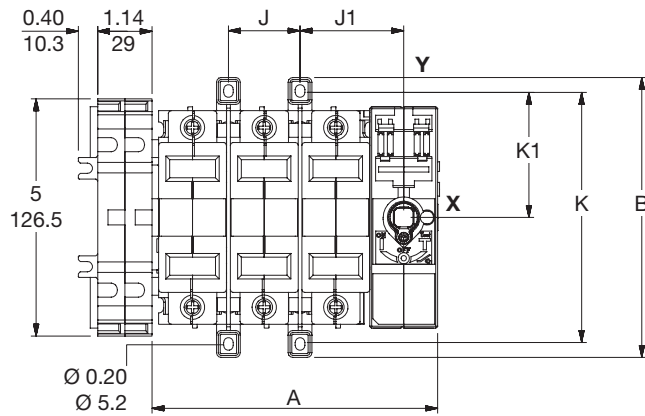
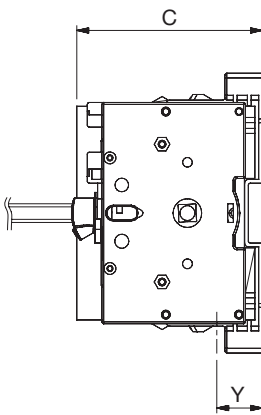
SIRCO V 30 A

SCV30
SCV30SN



SIRCO V 60-100A

SCV60U
SCV604U
SCV100U
SCV1004U

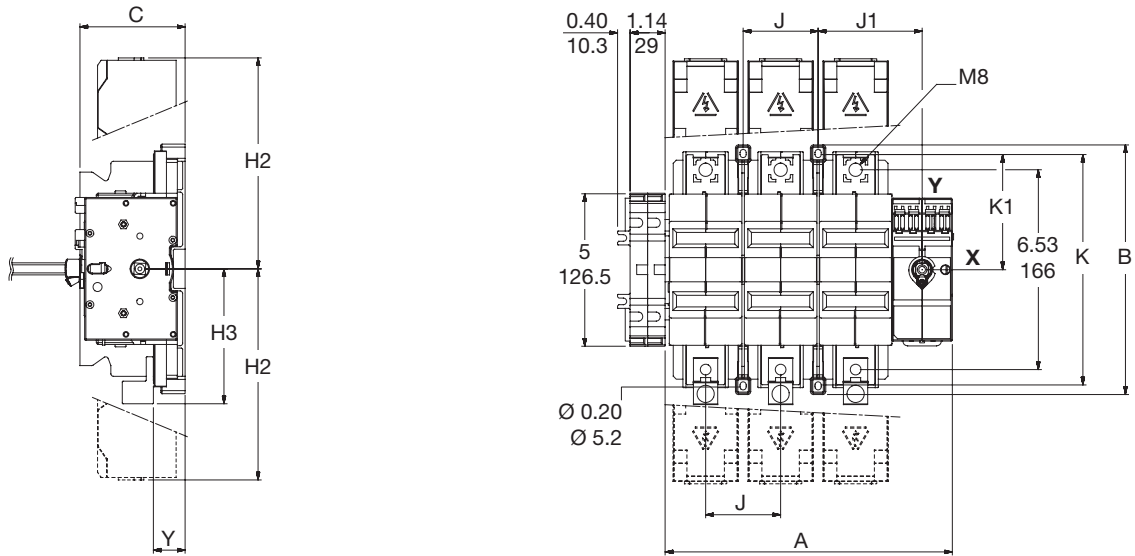


Rating	Number of pole	A		B		C		J		J1		K		K1		Y	
		In	mm	In	mm	In	mm	In	mm	In	mm	In	mm	In	mm	In	mm
V 30 A	3 P / 4 P	3.78	96	4.56	116	2.59	66	1.47	37.5	0.59	15	3.13	79.5	1	25.5	1.12	28.5
V 60 A	3 P	5.98	152	5.87	149	3.89	99	1.5	38	2.12	54	5.25	133.5	2.63	66.5	0.95	24.5
	4 P	7.48	190	5.87	149	3.89	99	1.5	38	2.12	54	5.25	133.5	2.63	66.5	0.95	24.5
V 100 A	3 P	5.98	152	5.87	149	3.89	99	1.5	38	2.12	54	5.25	133.5	2.63	66.5	0.95	24.5
	4 P	7.48	190	5.87	149	3.89	99	1.5	38	2.12	54	5.25	133.5	2.63	66.5	0.95	24.5

Dimensions (in / mm) for front and side operation

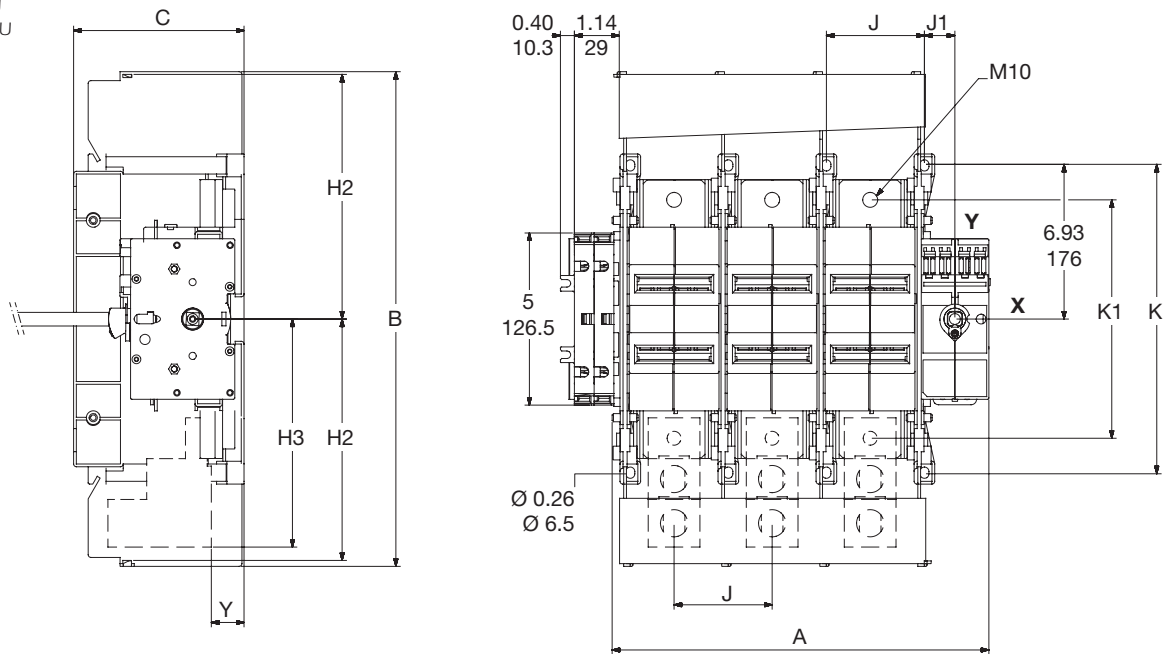
SIRCO V 200 A

SCV200U
SCV2004U



SIRCO V 400 A

SCV400U
SCV4004U

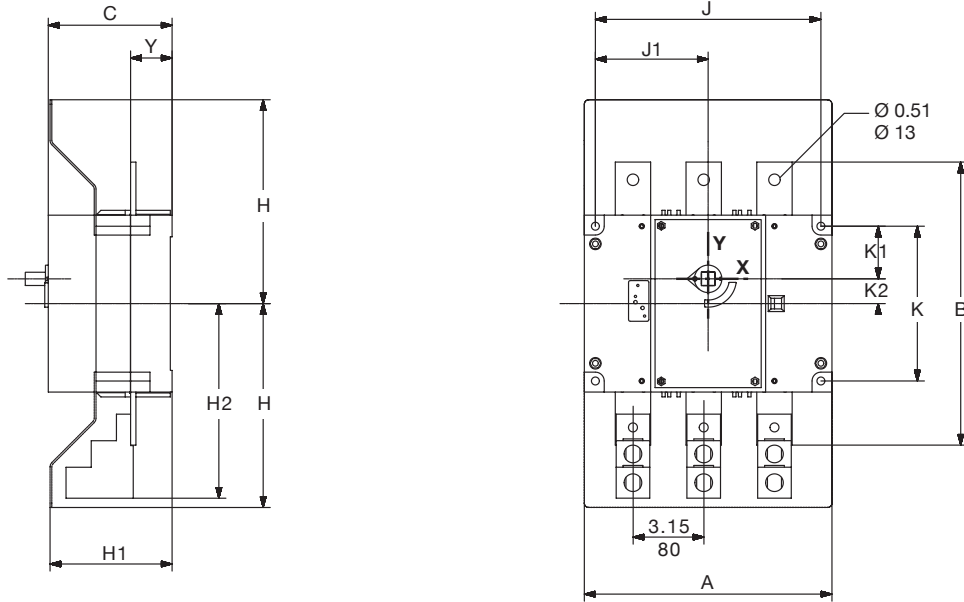


Rating	Number of pole	A		B		C		H		H1		H2		H3		J		J1		K		K1		Y	
		In	mm	In	mm	In	mm	In	mm	In	mm	In	mm	In	mm	In	mm	In	mm	In	mm	In	mm	In	mm
V 200 A	3 P	9.37	238	8.13	206.5	3.42	87	-	-	-	-	6.87	174.5	4.39	111.5	2.44	62	3.38	86	7.5	190.5	3.74	95	0.95	24.5
	4 P	11.81	300	8.13	206.5	3.42	87	-	-	-	-	6.87	174.5	4.39	111.5	2.44	62	3.38	86	7.5	190.5	3.74	95	0.95	24.5
V 400 A	3 P	10.8	276	14.31	363.5	4.92	125	-	-	-	-	7.04	179	6.59	167.5	2.84	72	0.88	22.5	8.83	224	4.41	112	1.06	27
	4 P	13.7	348	14.31	363.5	4.92	125	-	-	-	-	7.04	179	6.59	167.5	2.84	72	0.88	22.5	8.83	224	4.41	112	1.06	27

Dimensions (in / mm) for front operation

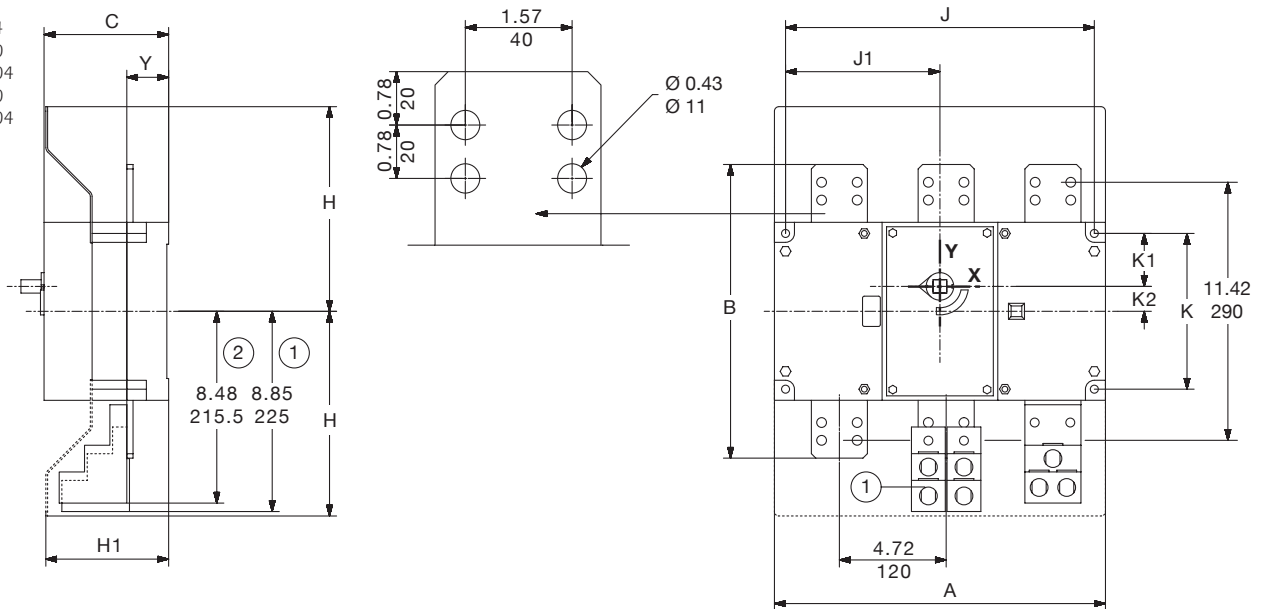
SIRCO 400-600 A

SC400
SC4004
SC600
SC6004



SIRCO 800-1000-1200 A

SC800
SC8004
SC1000
SC10004
SC1200
SC12004

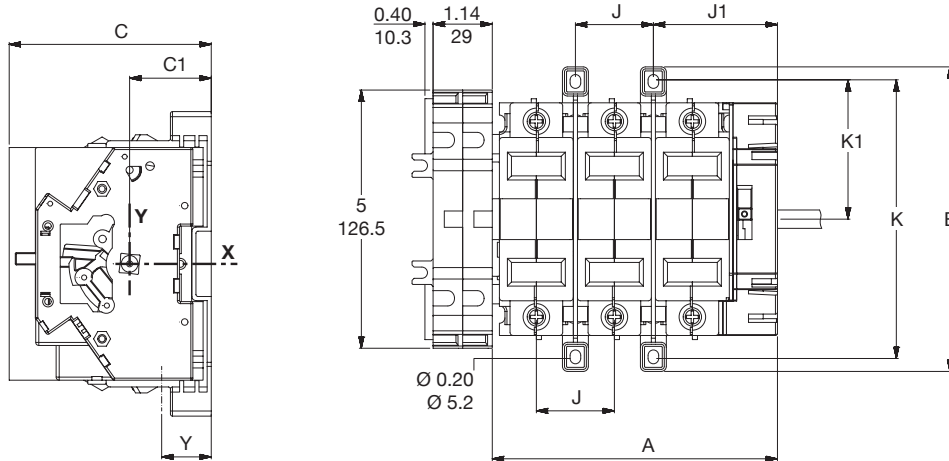


Rating	Number of pole	A		B		C		H		H1		H2		J		J1		K		K1	K2	Y			
		In	mm	In	mm	In	mm	In	mm	In	mm	In	mm	In	mm	In	mm	In	mm	In	mm	In	mm		
400 A	3 P	11.02	280	12.60	320	5.51	140	9.05	230	5.43	138	8.66	220	10.04	255	5	127.5	6.88	175	2.34	59.5	1.10	28	1.85	47
600 A	4 P	14.17	360	12.60	320	5.51	140	9.05	230	5.43	138	8.66	220	13.19	335	6.59	167.5	6.88	175	2.34	59.5	1.10	28	1.85	47
800 A - 1000 A	3 P	14.64	372	13	330	5.51	140	9.05	230	5.43	138	-	-	13.66	347	6.83	173.5	6.88	175	2.34	59.5	1.10	28	1.85	47
1200 A	4 P	19.37	492	13	330	5.51	140	9.05	230	5.43	138	-	-	18.38	467	9.19	233.5	6.88	175	2.34	59.5	1.10	28	1.85	47

Dimensions (in / mm) for side operation

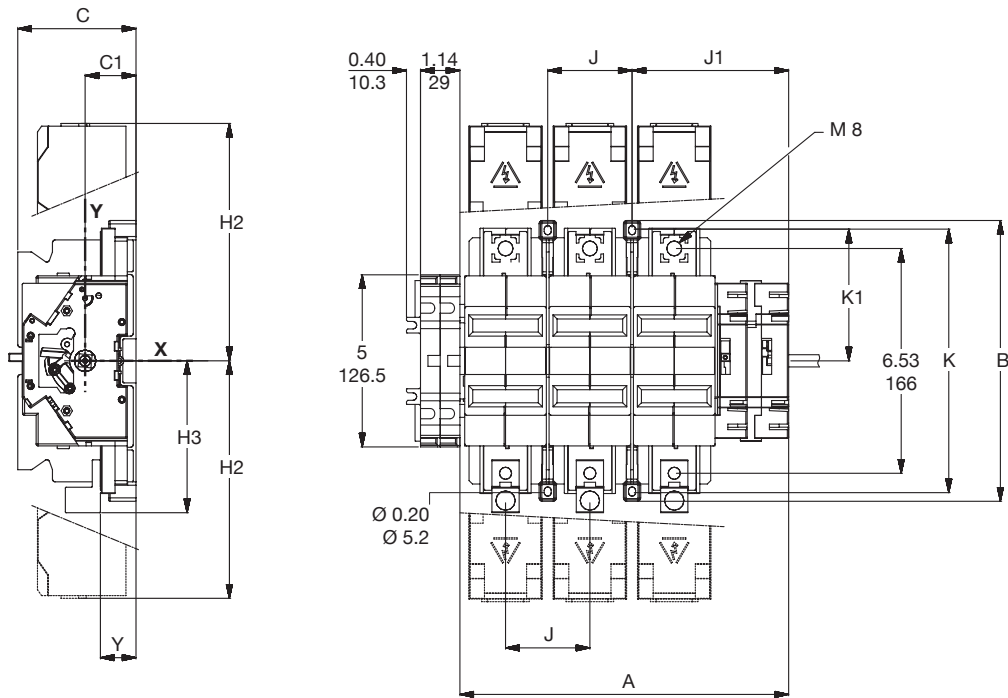
SIRCO V 60-100 A

SCV60SO
SCV604SO
SCV100SO
SCV1004SO



SIRCO V 200 A

SCV200SO
SCV2004SO

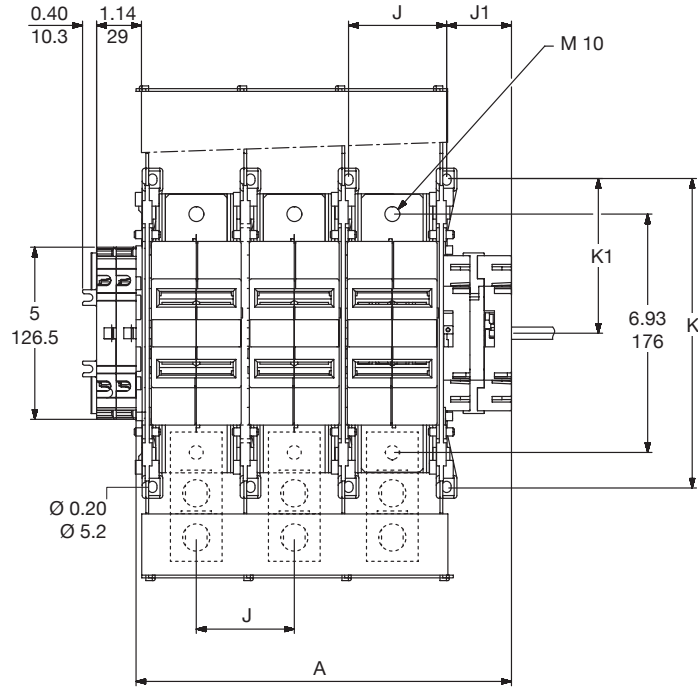
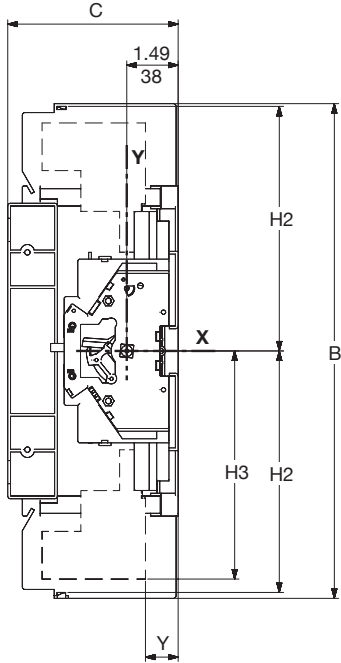


Rating	Number of pole	A		B		C		C1		H2		H3		J		J1		K		K1		Y	
		In	mm	In	mm	In	mm	In	mm	In	mm	In	mm	In	mm	In	mm	In	mm	In	mm	In	mm
V 60 A	3 P	5.45	138.5	5.86	149	3.89	99	1.57	40	-	-	-	-	1.49	38	2.32	59	5.25	133.5	2.62	66.5	0.96	24.5
	4 P	6.95	176.5	5.86	149	3.89	99	1.57	40	-	-	-	-	1.49	38	2.32	59	5.25	133.5	2.62	66.5	0.96	24.5
V 100 A	3 P	7.09	180	5.86	149	3.89	99	1.47	37.5	-	-	-	-	1.49	38	2.32	59	5.25	133.5	2.62	66.5	0.96	24.5
	4 P	9.13	232	5.86	149	3.89	99	1.47	37.5	-	-	-	-	1.49	38	2.32	59	5.25	133.5	2.62	66.5	0.96	24.5
V 200 A	3 P	9.47	240.5	8.13	206.5	3.42	87	1.47	37.5	6.87	174.5	4.39	111.5	2.44	62	4.47	113.5	7.5	190.5	3.74	95	0.96	24.5
	4 P	11.9	302.5	8.13	206.5	3.42	87	1.47	37.5	6.87	174.5	4.39	111.5	2.44	62	4.47	113.5	7.5	190.5	3.74	95	0.96	24.5

Dimensions (in / mm) for side operation

SIRCO V 400 A

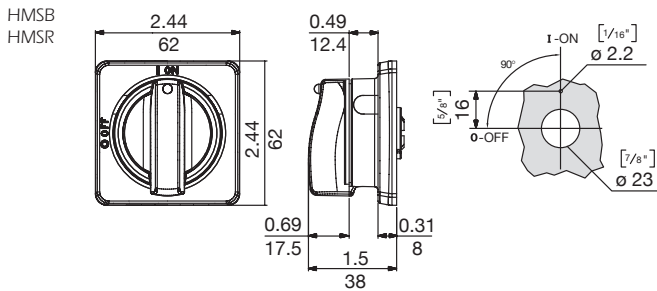
SCV400SO
SCV4004SO



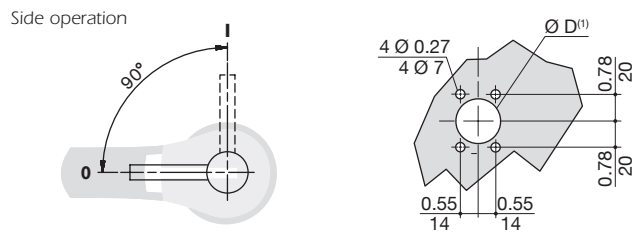
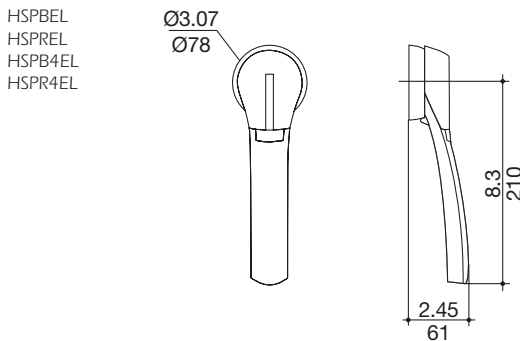
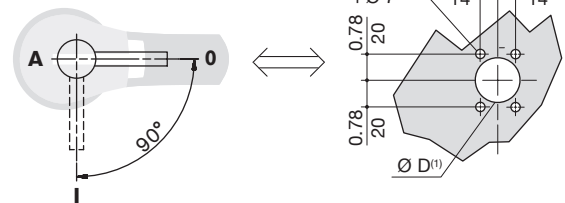
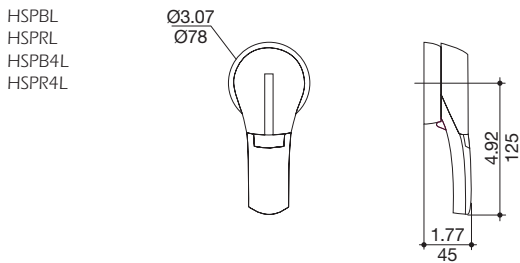
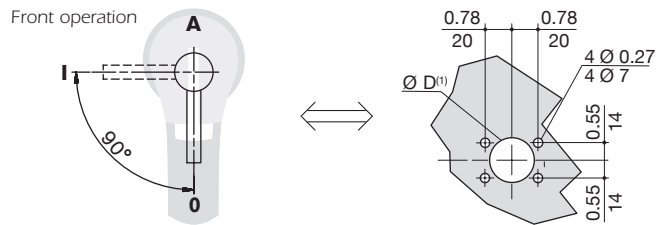
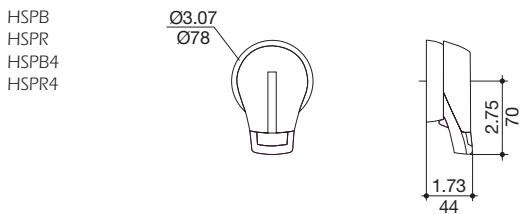
Rating	Number of pole	A		B		C		H2		H3		J		J1		K		K1		Y	
		In	mm	In	mm	In	mm	In	mm	In	mm	In	mm	In	mm	In	mm	In	mm	In	mm
V 400 A	3 P	10.9	277	14.31	363.5	4.92	125	7.04	179	6.59	167.5	2.84	72	1.89	48	8.82	224	4.41	112	1.06	27
	4 P	13.74	349	14.31	363.5	4.92	125	7.04	179	6.59	167.5	2.84	72	1.89	48	8.82	224	4.41	112	1.06	27

Dimensions (in / mm) for external front operation handles

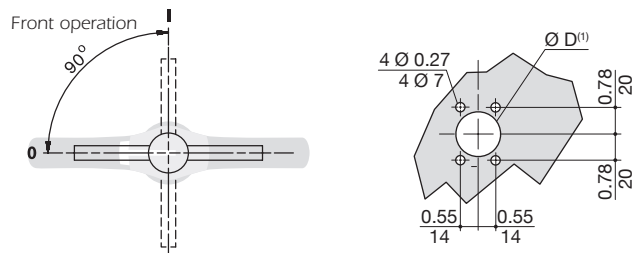
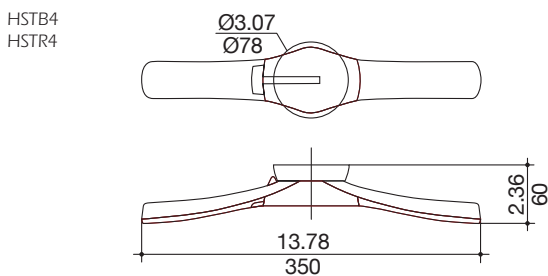
M type selector handle



S type pistol handle



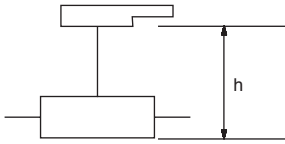
S type pistol double handle



(1) Conventional fixing (from rear): D = 1.22 to 1.45 in / 31 to 37 mm.
Fast fixing (external, door closed): D = 1.45 in / 37 mm, fast fixing is achieved with special clips that avoid drilling for fixation of the handle on the door. Clips are included.

Dimensions (in / mm) from backplate to door distance with shaft extension

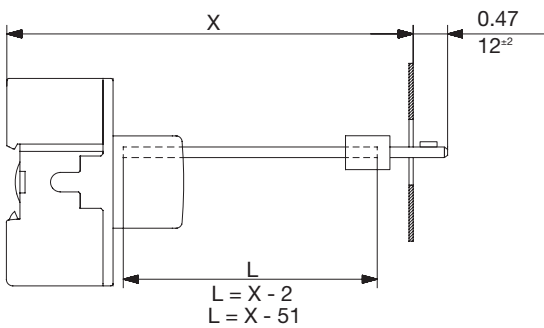
Minimum distance (in / mm)



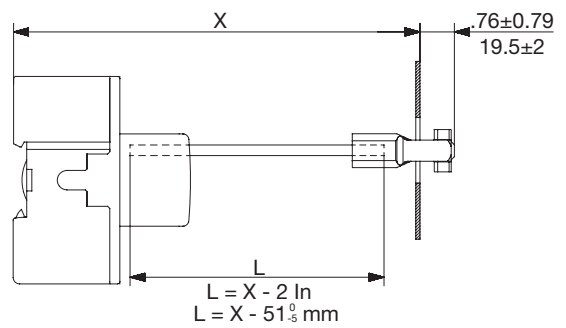
h minimum dimension	Handle type M		Handle type S	
	In	mm	In	mm
SIRCO V 30 A	4.14	105	5.31	135
SIRCO V 60-100 A	-	-	5.31	135
SIRCO V 200 A	-	-	4.84	123
SIRCO V 400 A	-	-	6.34	161
SIRCO 400-600 A	-	-	8.70	221
SIRCO 800-1000-1200	-	-	8.70	221

Shaft trimming length (= dimension L)

M type selector handle
SCV30
SCV30SN



S type pistol handle
SCV30
SCV30SN



S type pistol handle

SCV60U
SCV6004U
SCV100U

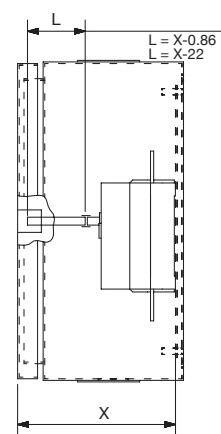
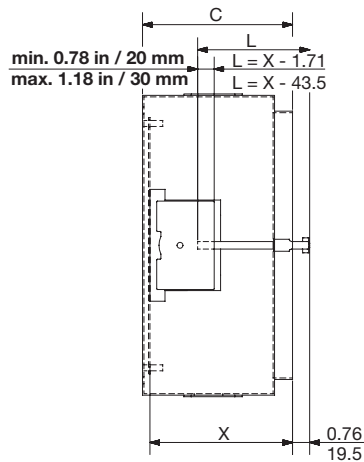
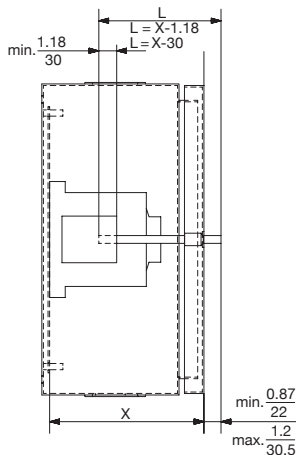
SCV1004U
SCV200U
SCV2004U

SCV400U
SCV4004U

SC400
SC4004
SC600
SC6004

SC800
SC8004
SC1000
SC10004

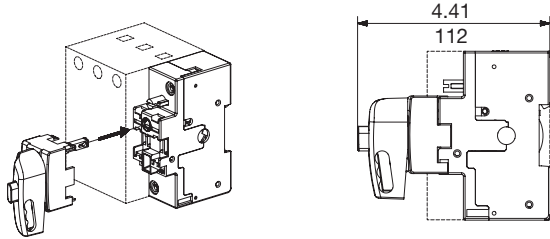
SC1200
SC12004



Dimensions (in / mm) for direct front operation handles

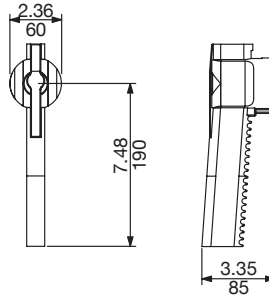
Direct pistol handle

HADB1



Direct pistol handle

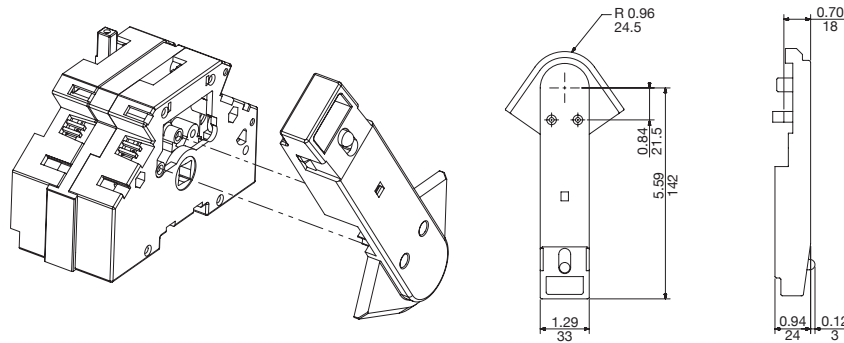
HADB5U



Dimensions (in / mm) for direct side operation handles

Direct pistol handle

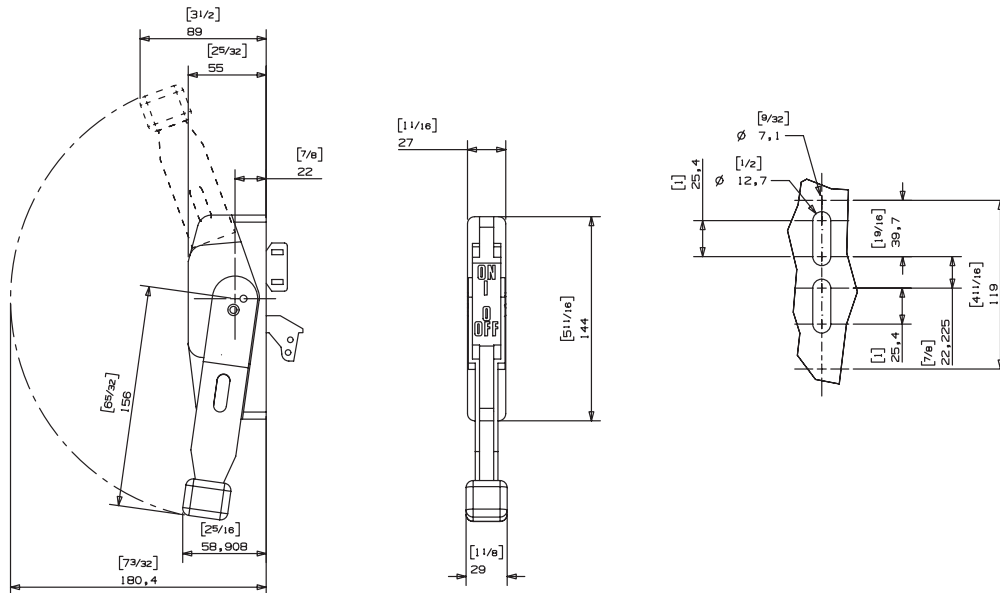
HADB4



Dimensions (in / mm) for flange operation handles

Square D type flange handle - class 9422 (A1 & A2)

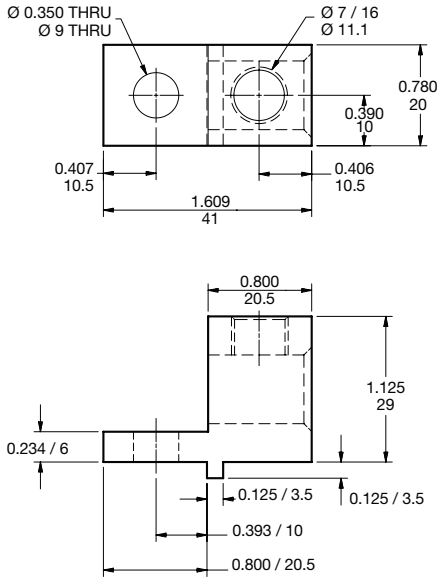
HAF - OP1
HAF - OP2



Dimensions (in / mm) for terminal lugs

TL200

For use with SIRCO V 200 A

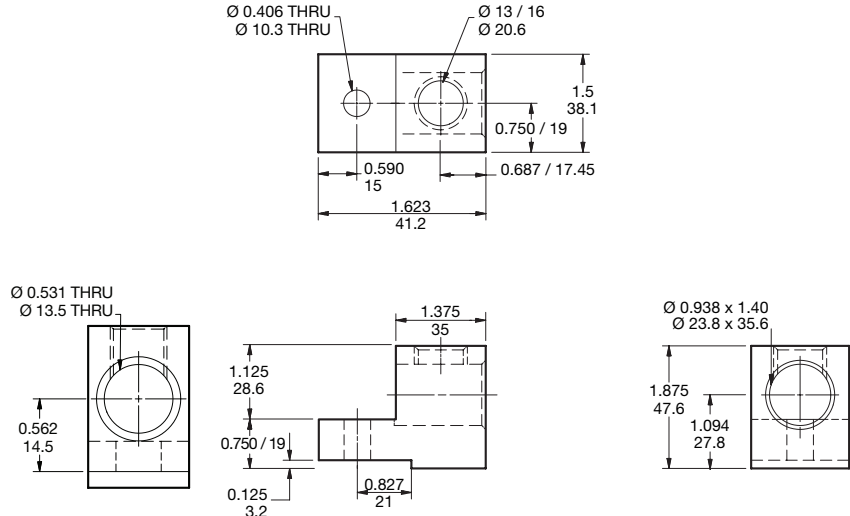


1 wire 3 / 0 - #6

Note: for SCV200, please use HM bolts 8 x 20 mm class 6.8.

TL400

For use with SIRCO V 400, SIRCO 400



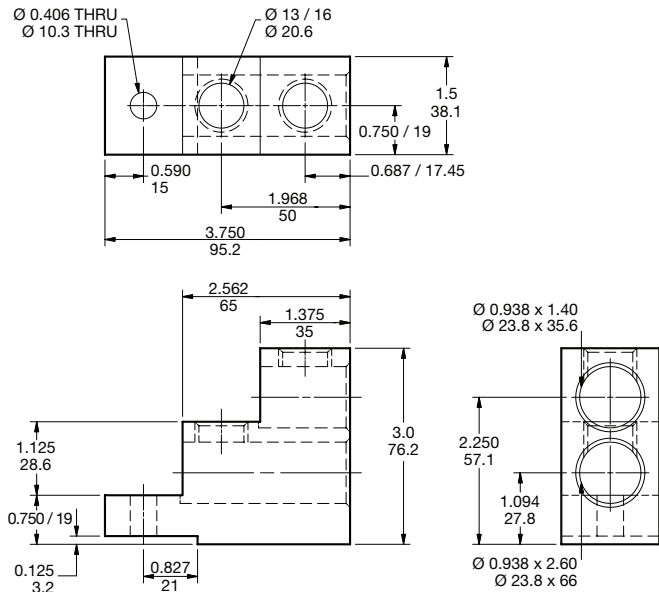
1 wire 600 MCM-2

Note: for SCV400, please use HM bolts 10 x 30 mm class 6.8.

TL600 and TL1200

TL600: For use with SIRCO 600 A (1 lug per terminal)

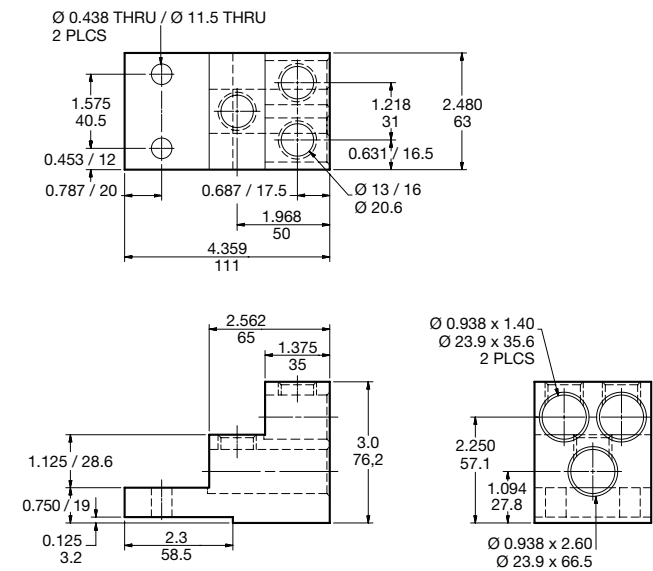
TL1200: For use with SIRCO 800, 1000 & 1200 A (2 lugs per terminal)



2 wires 600 MCM-2

TL 800

For use with SIRCO 800 A



3 wires 600 MCM-2