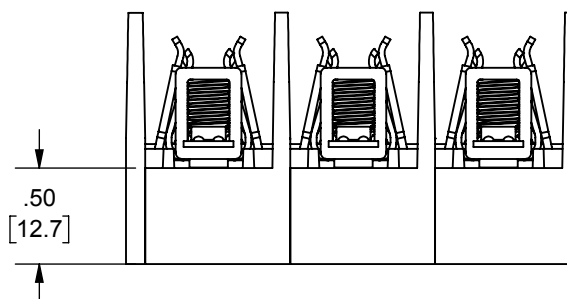
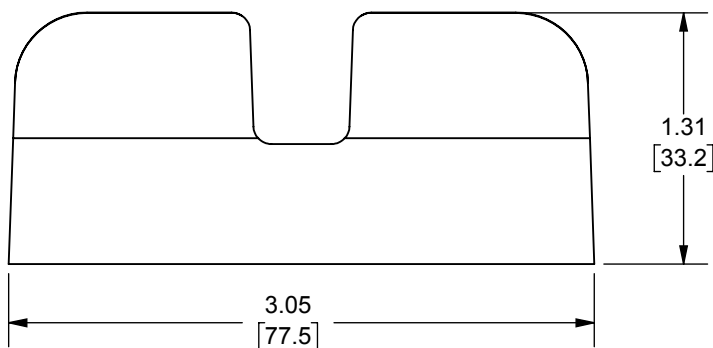
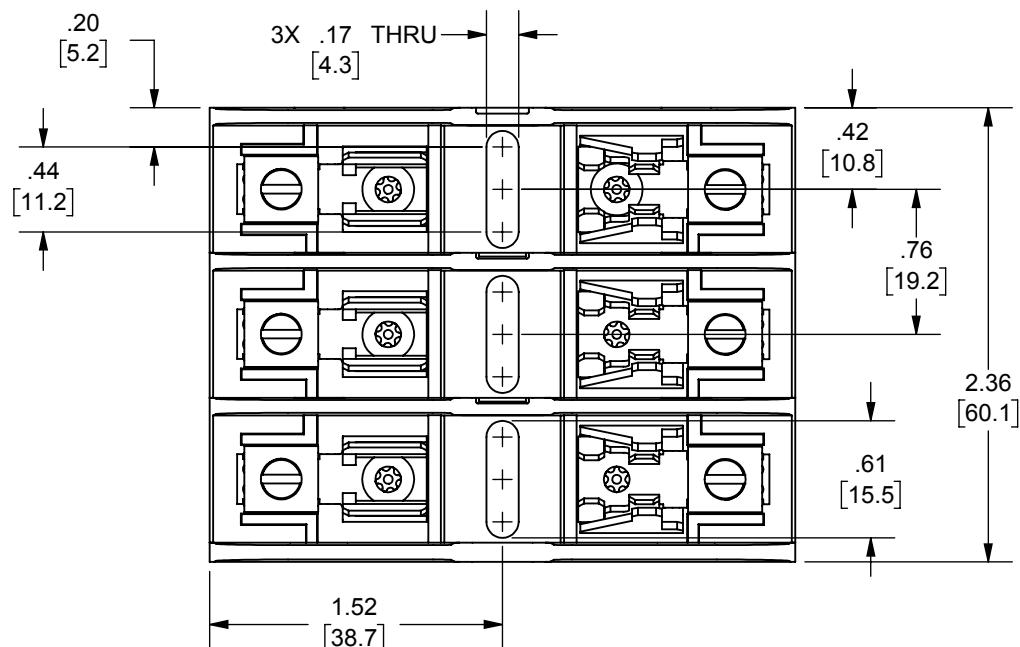


REV.	DATE	ECO	DESCRIPTION	BY	CK	APP
C	10-4-17	N/A	REDRAWN: WAS REVISION 02; UPDATED FORMAT; DIM 2.36 WAS 2.35, .76 WAS .75, .44 WAS .45, 3.05 WAS 3.04	LDB	N/A	N/A



NOTES: UNLESS OTHERWISE SPECIFIED

1. MATL COMPOSITION AND RATING: POLYCARBONATE-125°C RTI.

2 OMIT REJECTION

DIMENSIONS IN [] ARE MILLIMETERS

P/N	FUSE CLASS	RMS SYM RATING	TORQUE (IN-LBS)	°C WIRE	U/L		CSA
					FILE NO.	GUIDE NO.	REPORT NO.
30353 [2]	MISC.	200K	35	75	E52283	IZLT2	LR32169
30353R	CC	200K	35	75			



MERSEN USA NEWBURYPORT-MA, LLC
374 MERRIMAC STREET
NEWBURYPORT, MA 01950

PRODUCT MANAGER

SIGN: S BENSON

DATE: 10-5-17

DESIGN ENGINEER

SIGN: J MOSESIAN

DATE: 10-4-17

M/CC 3 POLE BOX CONN

30353 (R)

600V-30A

OUTLINE DIMENSIONS
NOT TO BE USED FOR PRODUCTION

05B0327