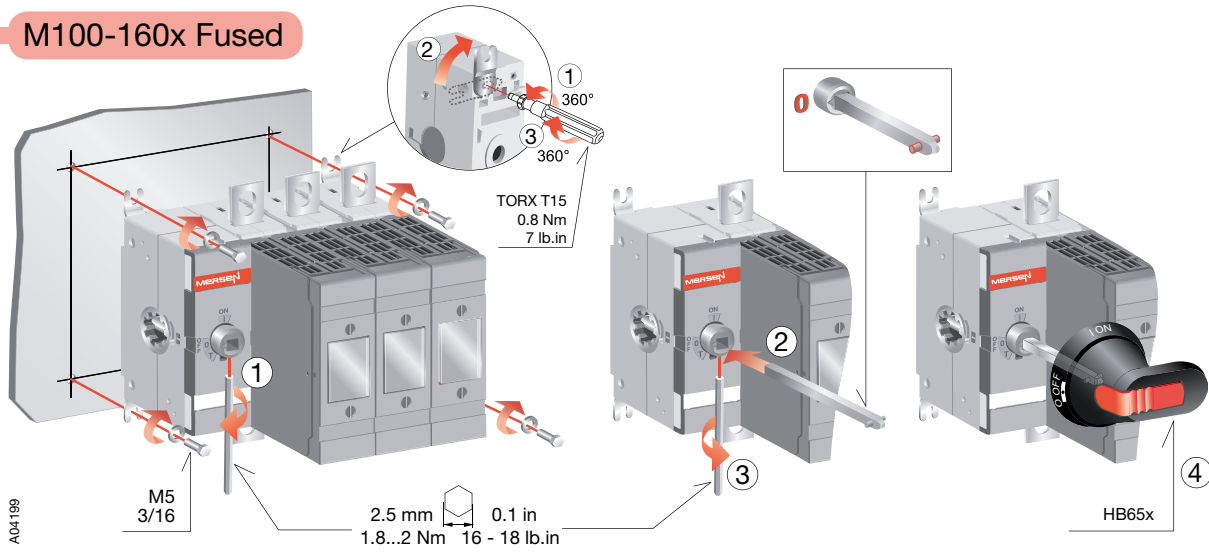
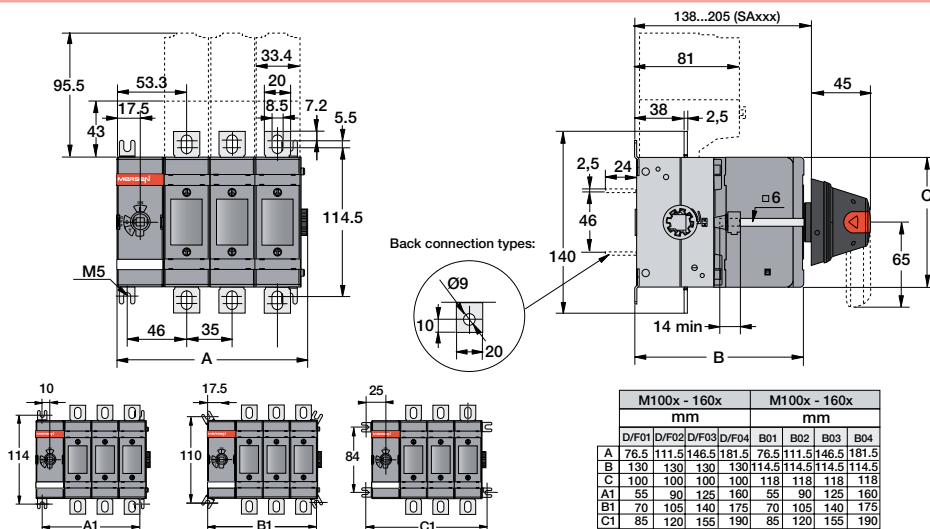


# M100-160x Fused

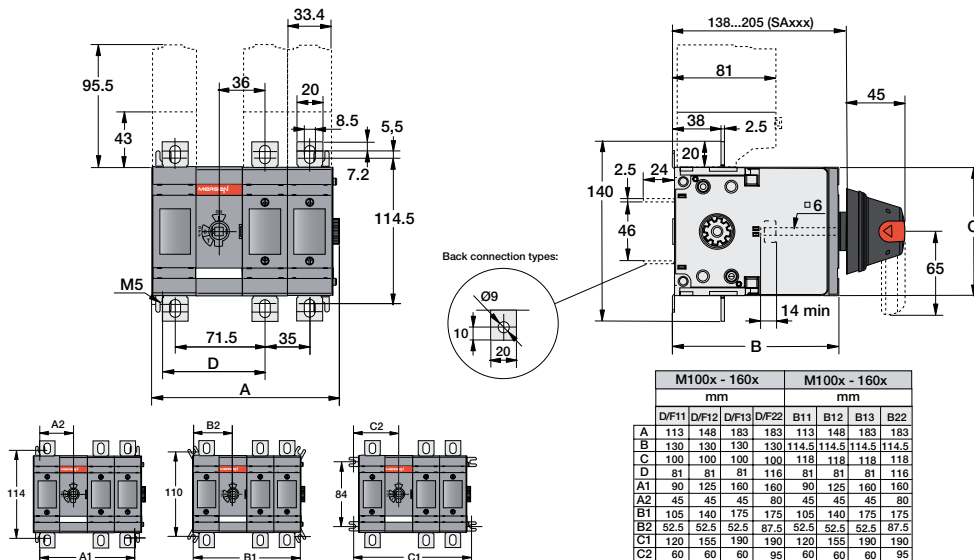
## M100-160x Fused



### 100 A to 160 A DIN, NFC or BS-88 versions, 0-3 configuration

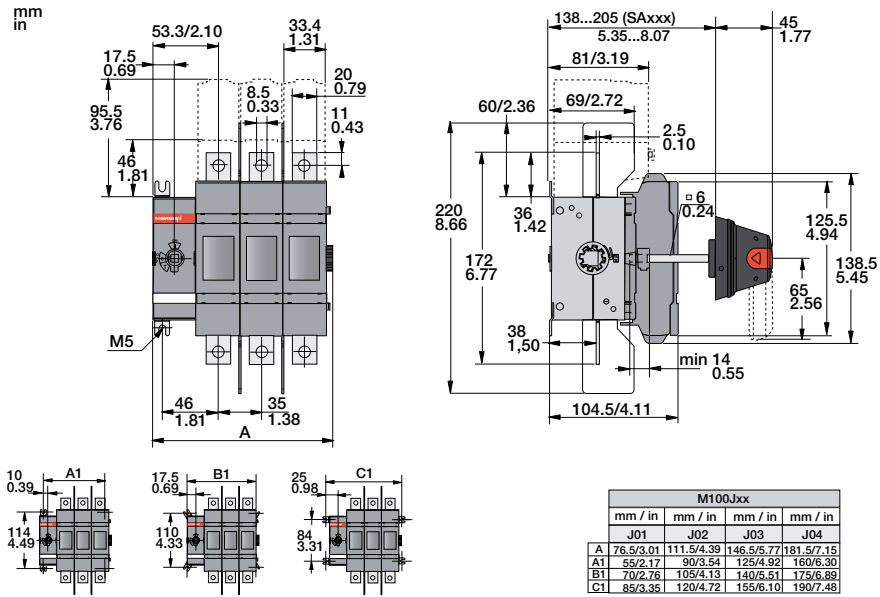


### 100 A to 160 A DIN, NFC or BS-88 versions, 1-1 to 2-2 configuration

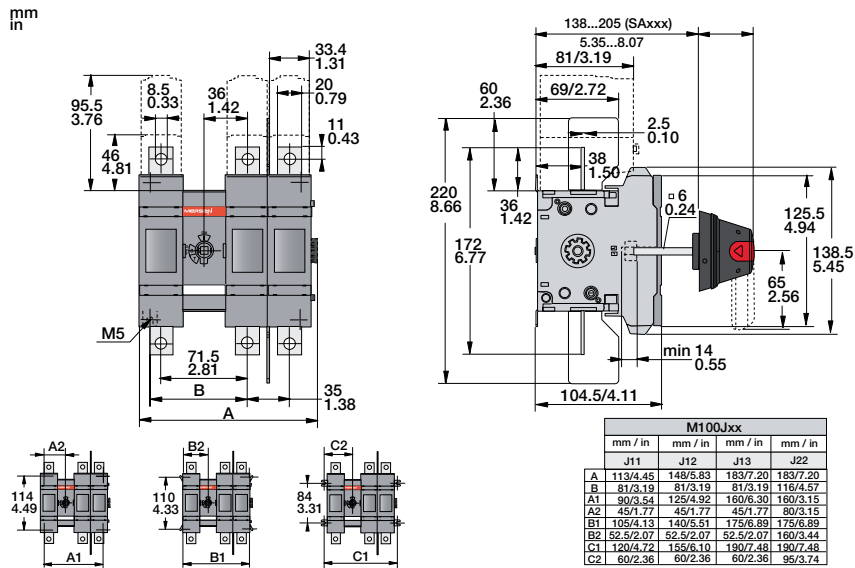


# M100x - M160x Fused

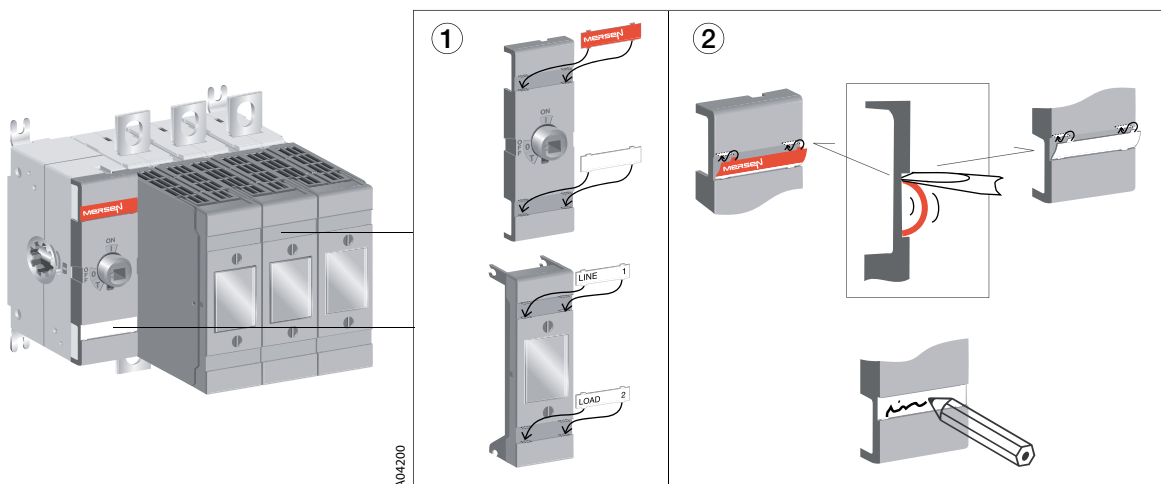
## M100J30



## M100J12



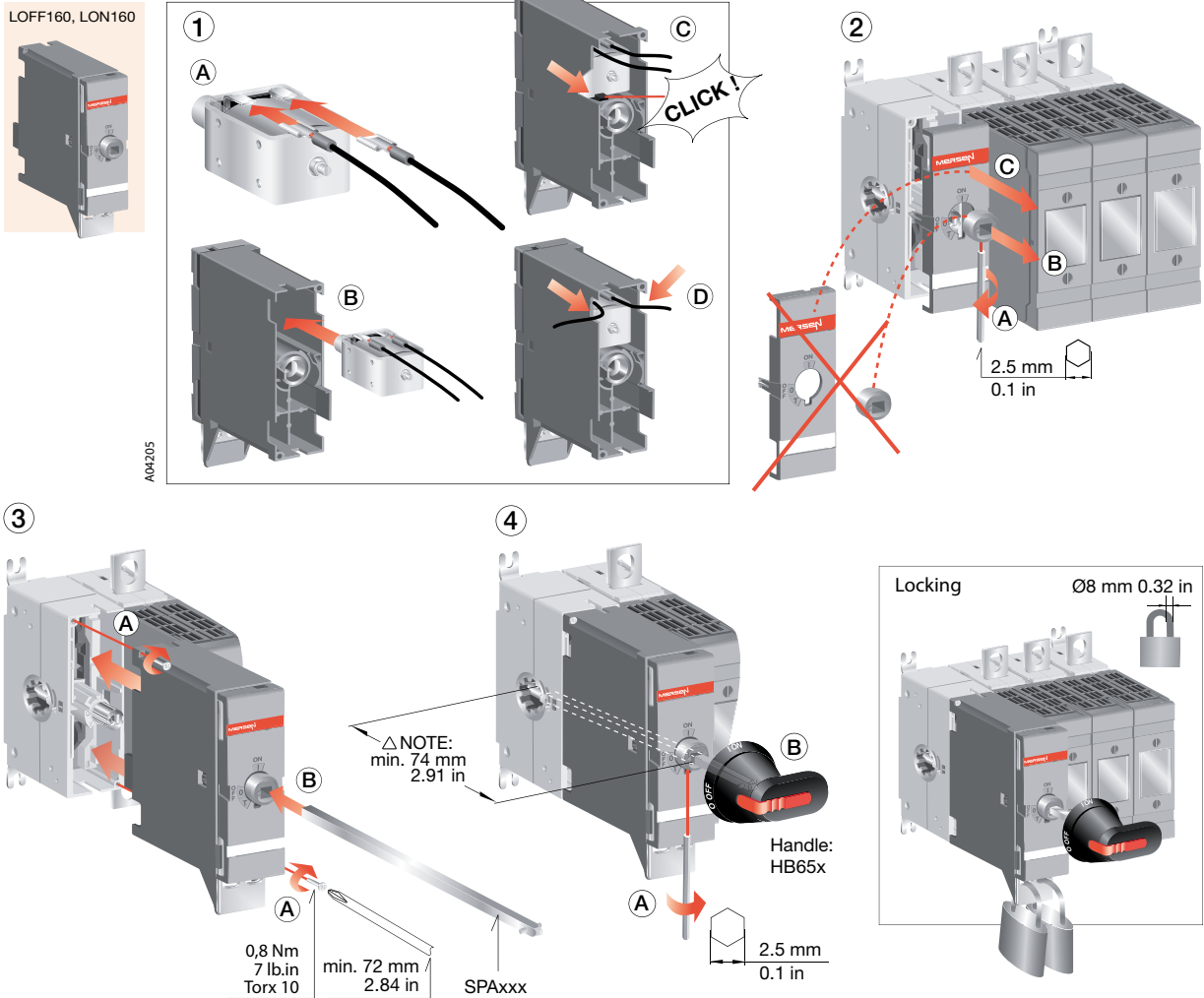
## Label



# M100x - M160x Fused

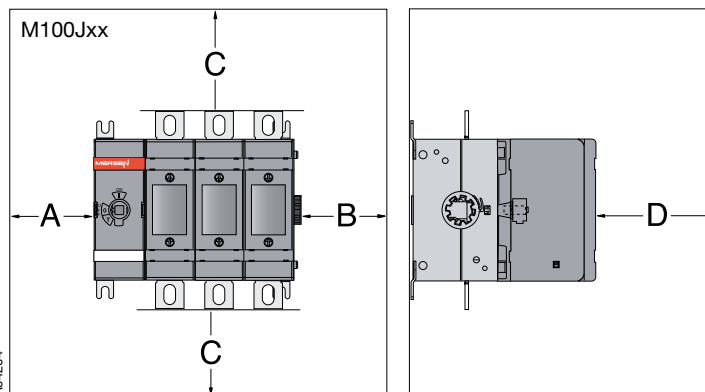
## LOFF160, LON160 Locking Mechanism

LOFF160, LON160



## Clearances per UL98

Minimum enclosure size or equivalent volume



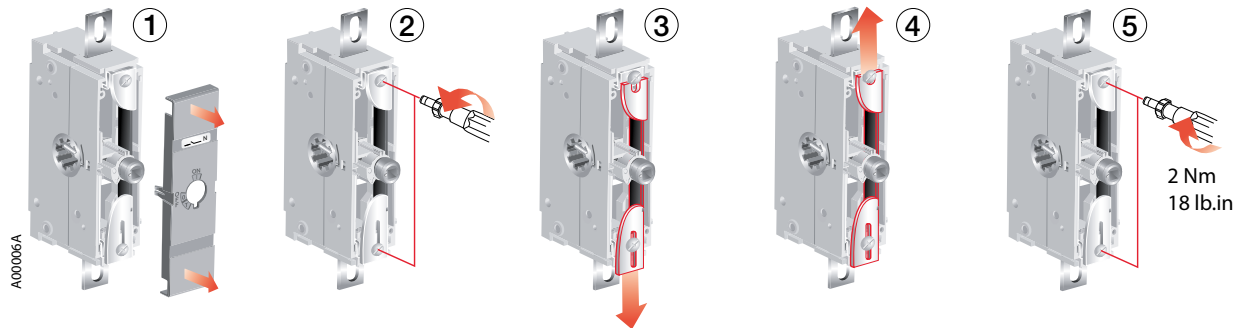
Height	Width	Depth
300 mm	350 mm	200 mm
12 in	14 in	8 in

A	0
B	13 mm 0.5 in
D	13 mm 0.5 in

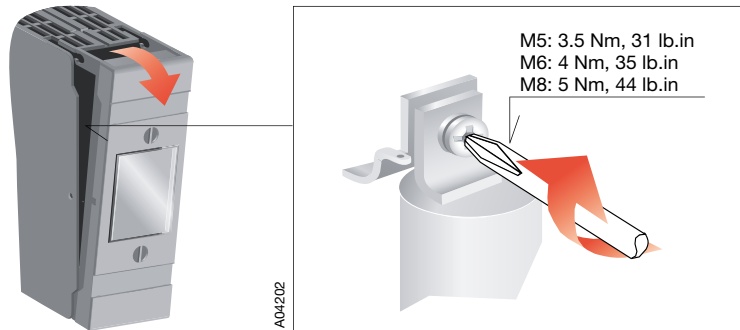
Cable size		
AWG	C	
14-8	38 mm	1.5 in
6	51 mm	2 in
4-1	100 mm	4 in
1/0	125 mm	5 in
2/0	150 mm	6 in

# M100x - M160x Fused

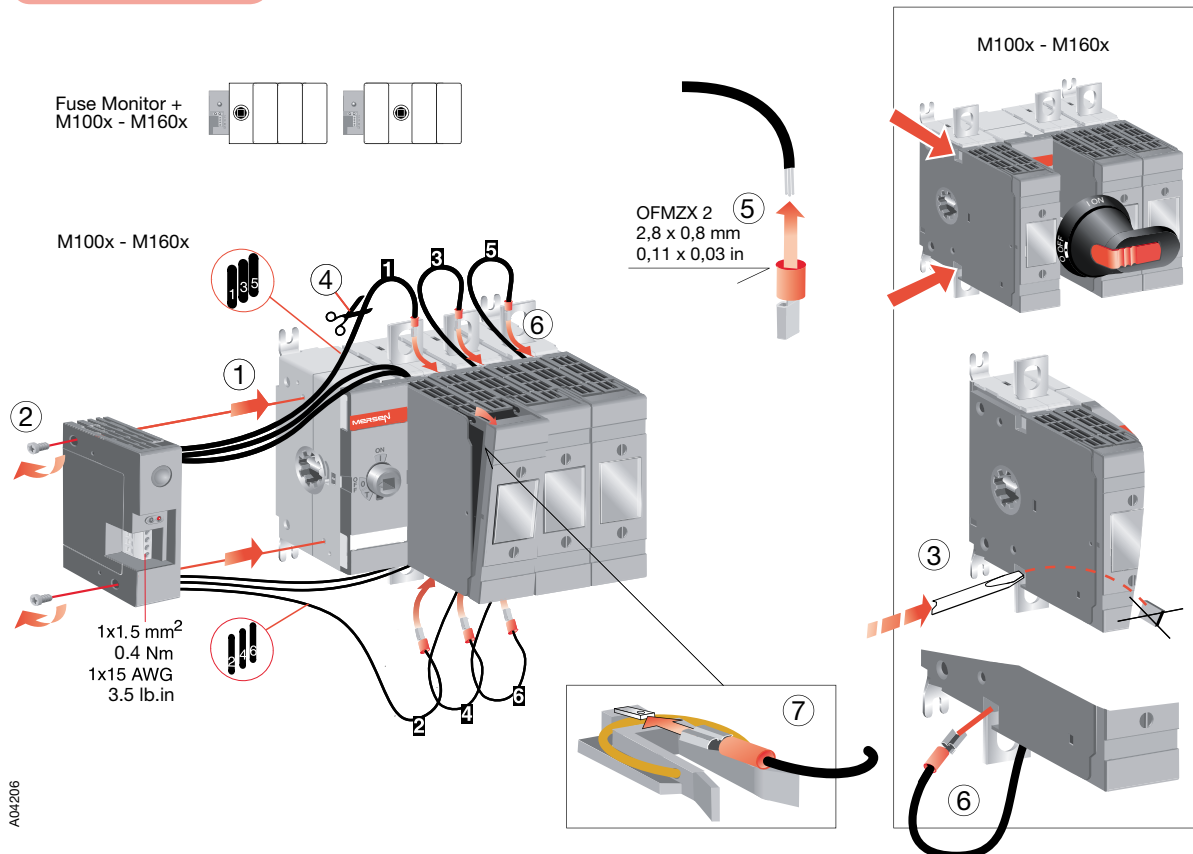
## Neutral Links



## Fuse links

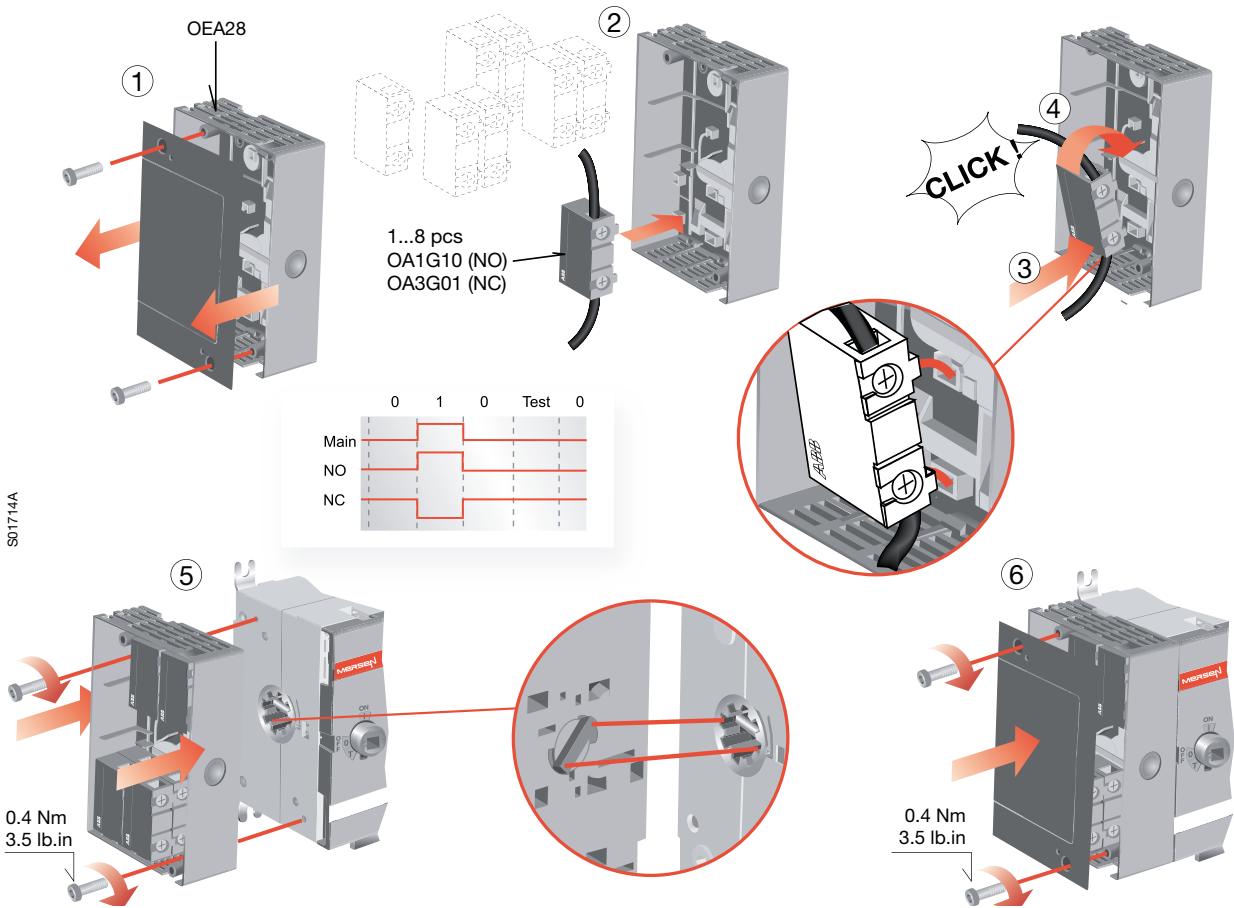


## Fuse Monitor

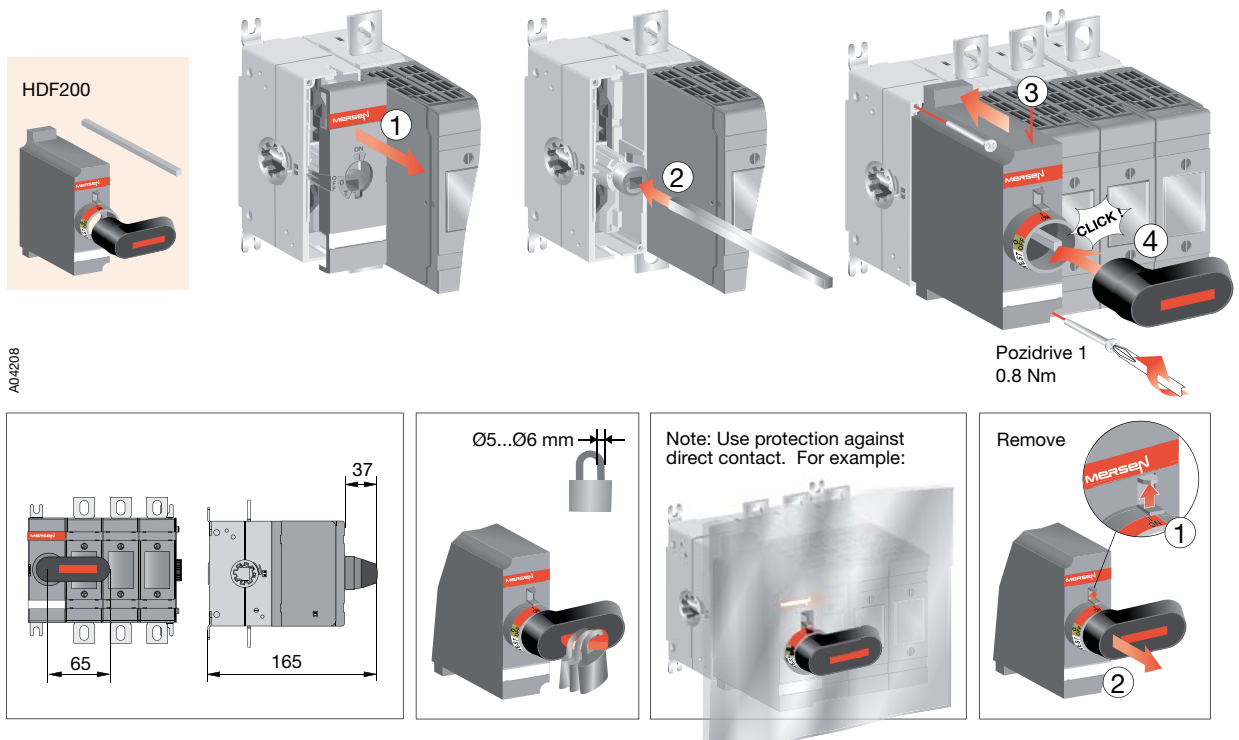


# M100x - M160x Fused

## Externally mounted Auxiliary contacts

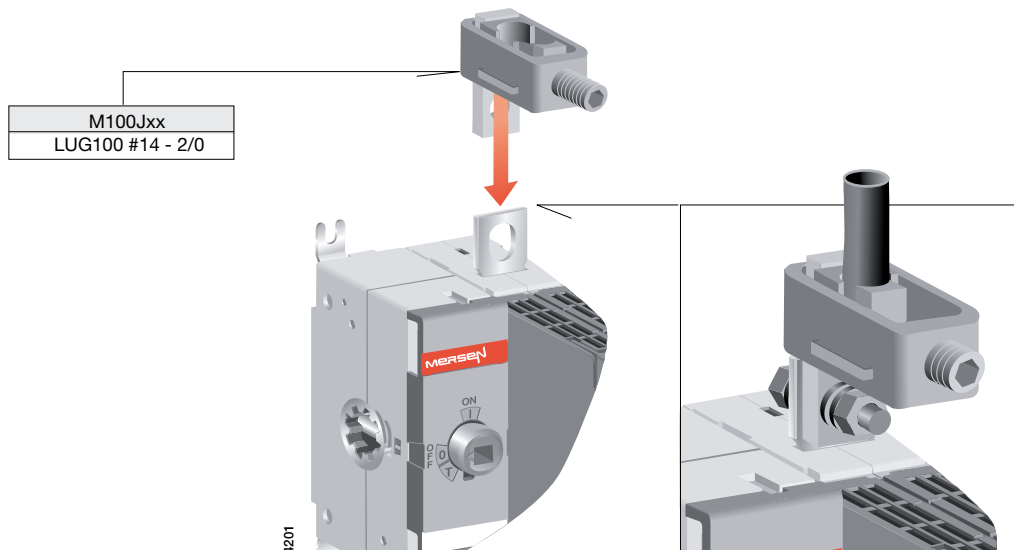


## Direct-mounted Handles

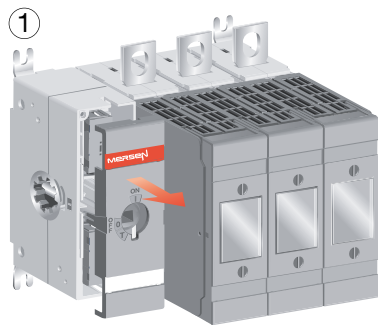


# M100x - M160x Fused

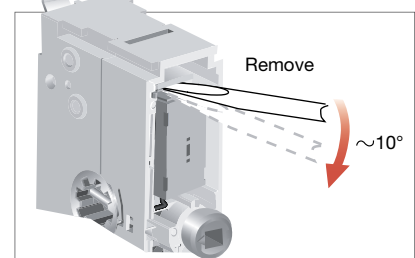
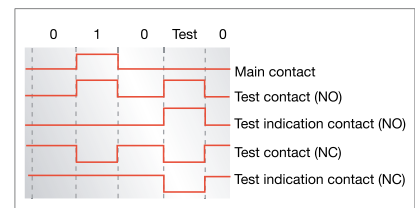
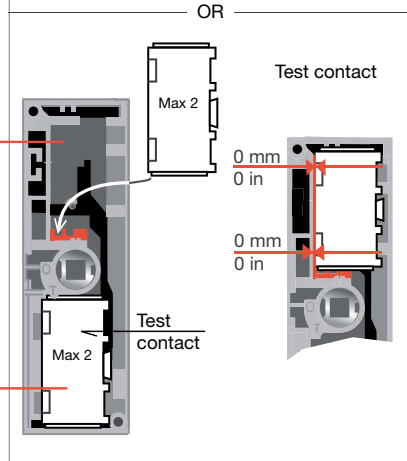
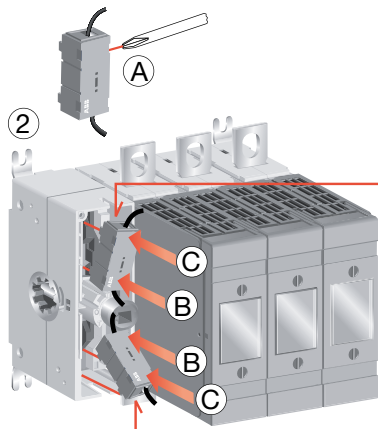
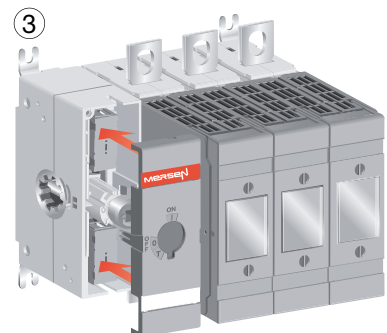
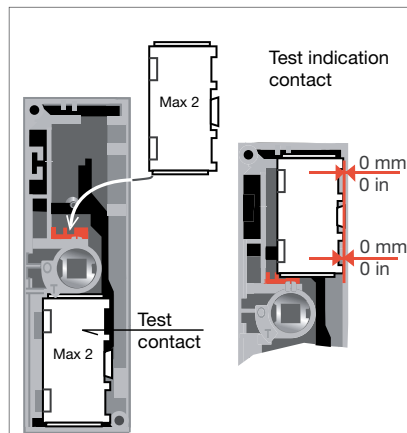
## Lugs



## Internally mounted Auxiliary contacts



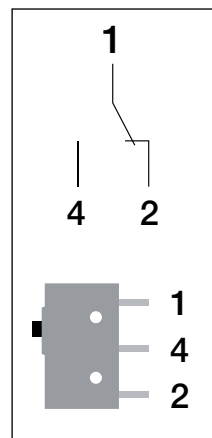
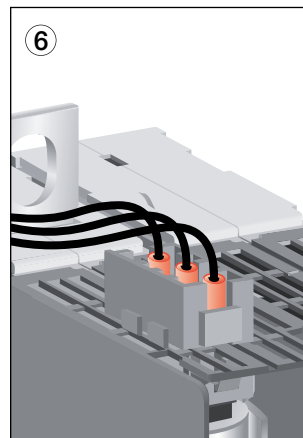
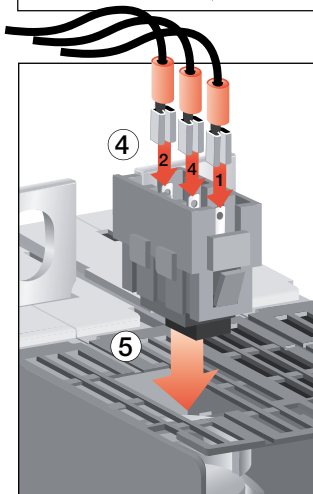
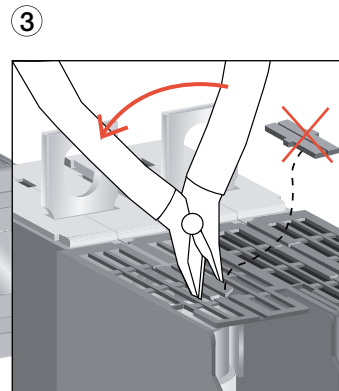
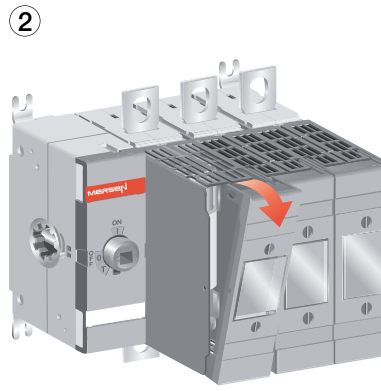
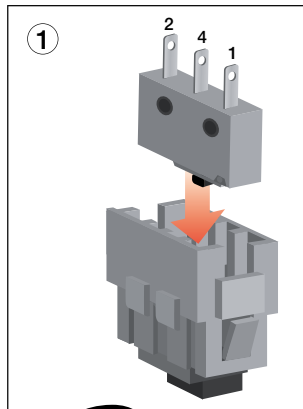
NO: OA1G10  
NC: OA3G01



A04209

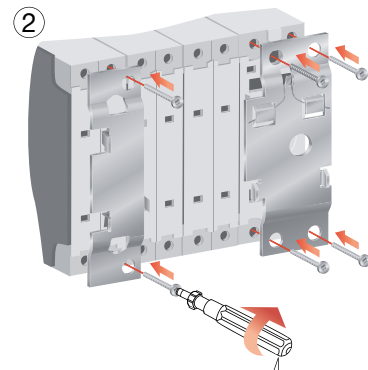
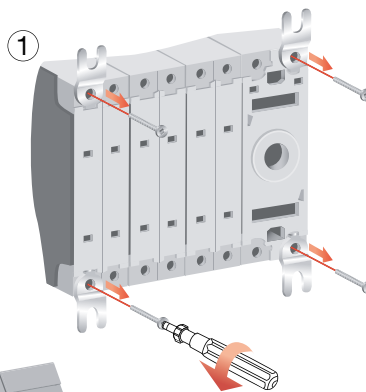
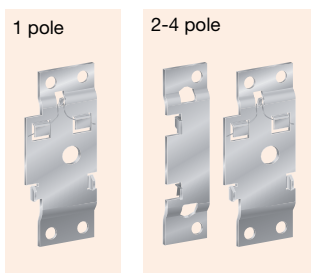
# M100x - M160x Fused

## Blown Fuse Indicators

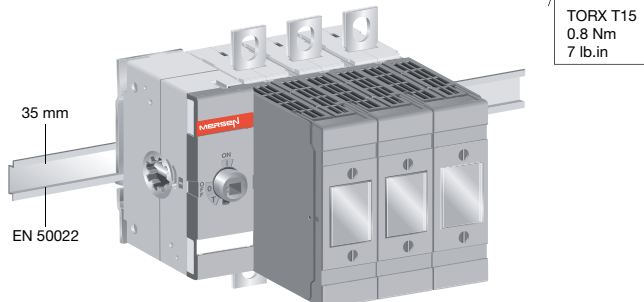
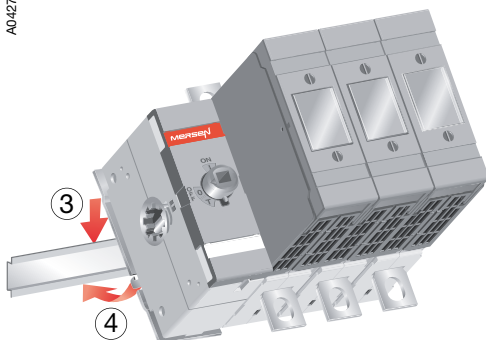


A04277

## DIN-rail mounting kit

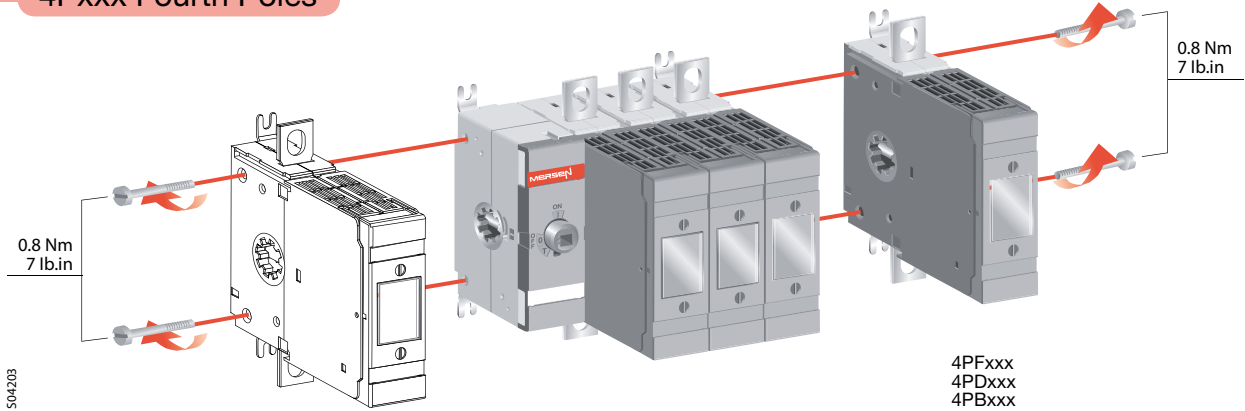


A04275



# M100x - M160x Fused

## 4Pxxx Fourth Poles



## TSFxxx Terminal Shrouds

