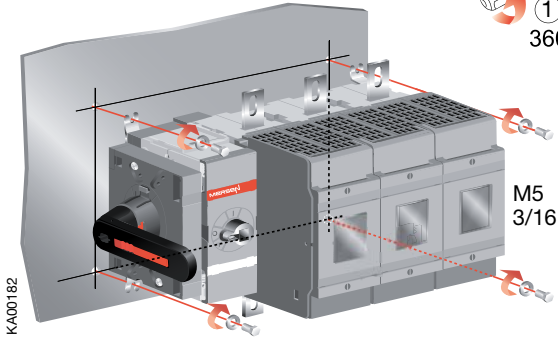


M315-400xS Fused

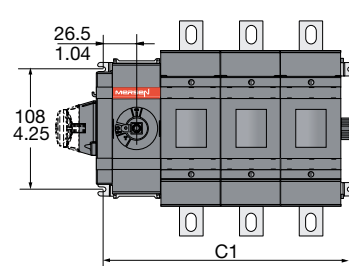
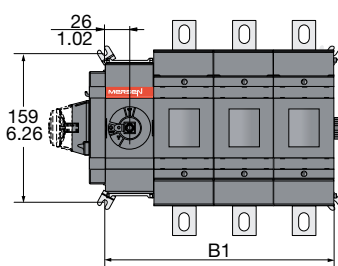
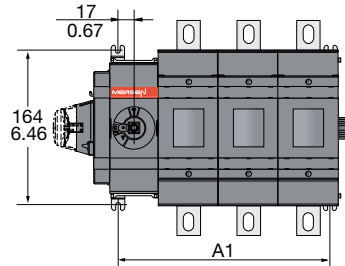
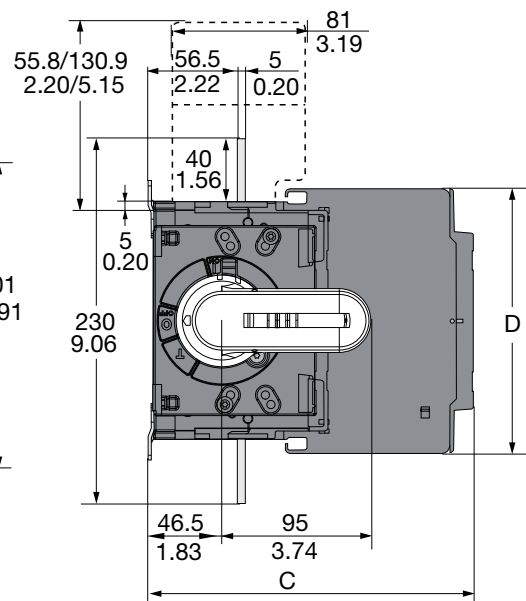
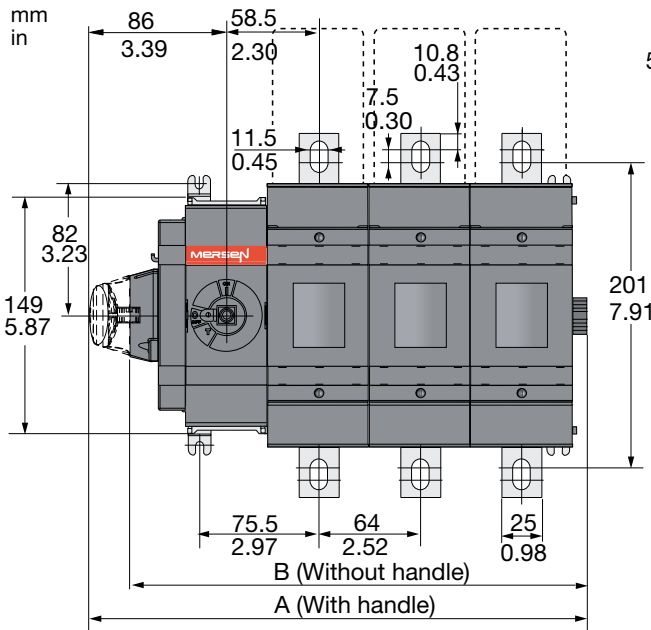
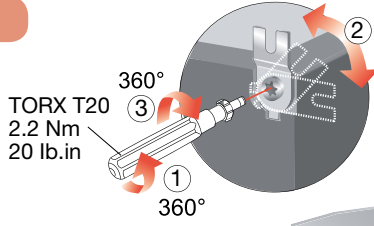
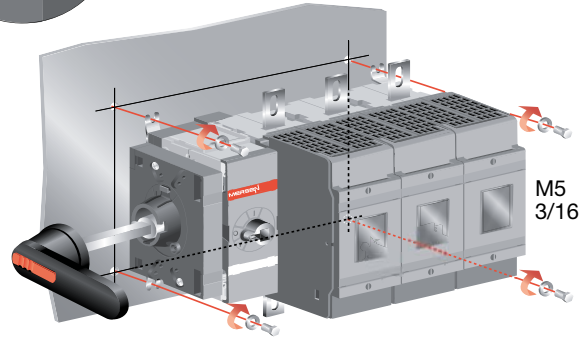
Document no. 34M315-400xS-A

M315-400xS Fused

Direct-mount Handle



Externally-mounted handle



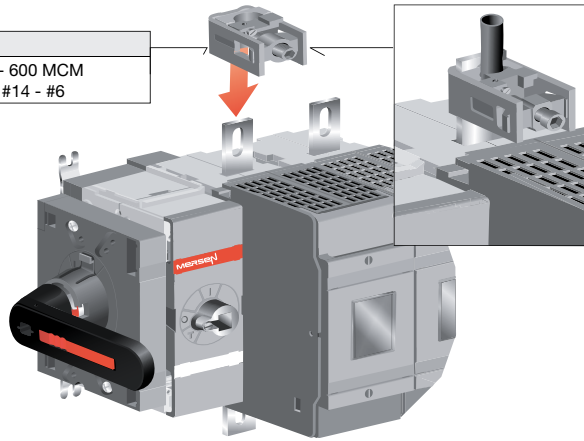
M315xS-M400xS																
	BS01/JS01		BS02/JS02		BS03/JS03		BS04/JS04		DS01		DS02		DS03		DS04	
	mm	in	mm	in	mm	in	mm	in	mm	in	mm	in	mm	in	mm	in
A	185.0	7.28	249.0	9.80	313.0	12.32	377.0	14.84	185.0	7.28	249.0	9.80	313.0	12.32	377.0	14.84
B	160.0	6.30	224.0	8.82	288.0	11.34	352.0	13.86	160.0	6.30	224.0	8.82	288.0	11.34	352.0	13.86
C	176.0	6.93	176.0	6.93	176.0	6.93	176.0	6.93	193.0	7.60	193.0	7.60	193.0	7.60	193.0	7.60
D	194.0	7.64	194.0	7.64	194.0	7.64	194.0	7.64	166.0	6.54	166.0	6.54	166.0	6.54	166.0	6.54
A1	98.5	3.88	162.5	6.40	226.5	8.92	290.5	11.44	98.5	3.88	162.5	6.40	226.5	8.92	290.5	11.44
B1	116.5	4.59	180.5	7.11	244.5	9.63	308.5	12.15	116.5	4.59	180.5	7.11	244.5	9.63	308.5	12.15
C1	134.5	5.30	198.5	7.81	262.5	10.33	326.5	12.85	134.5	5.30	198.5	7.81	262.5	10.33	326.5	12.85

M315-400xS Fused

Lugs

M400JxxS
LUG400 - AWG #2 - 600 MCM
LUG406 - 6 x AWG #14 - #6

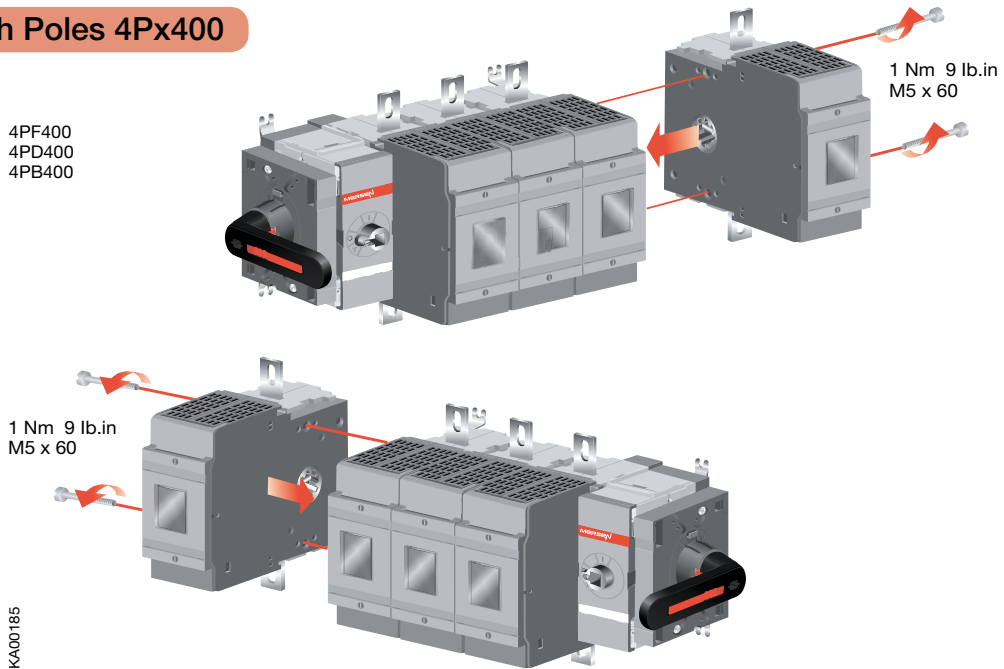
KA00183



Fourth Poles 4Px400

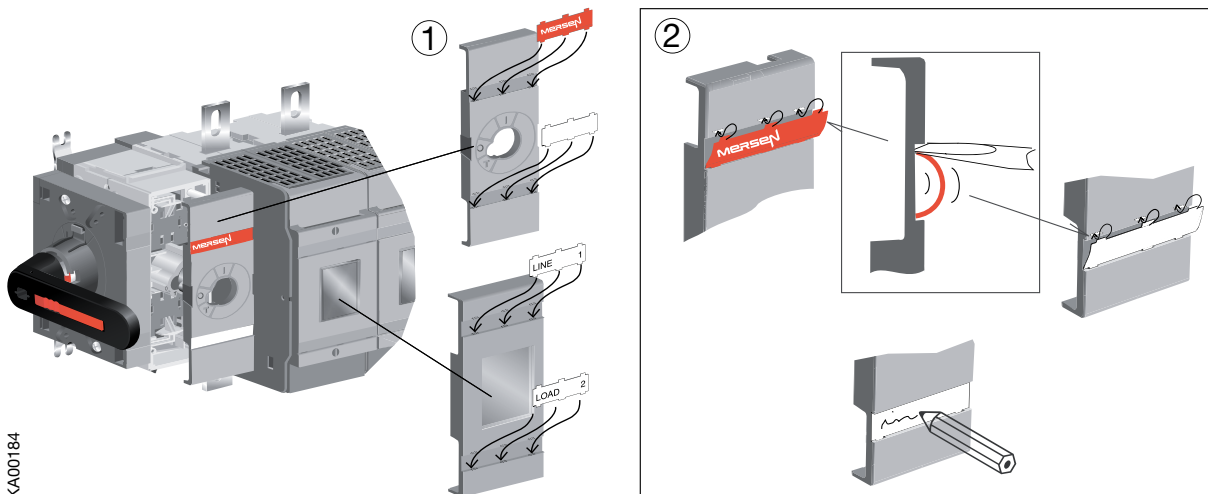
4PF400
4PD400
4PB400

KA00185



Label

KA00184



M315-400xS Fused

Clearances per UL98

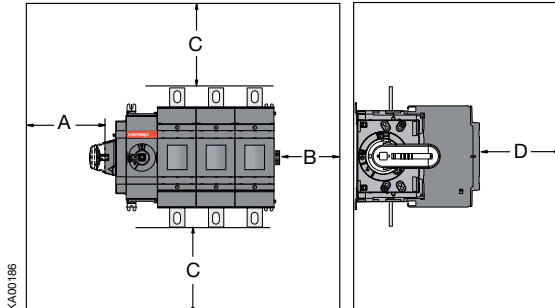
Minimum enclosure size or equivalent volume

Switch	Height	Width	Depth
3-pole	610	356	254
4-pole	610	508	254

A	B	D
0	13 mm 0.5 in	13 mm 0.5 in

Cable size

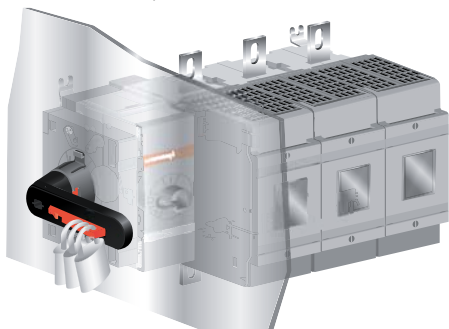
AWG	C	MCM	C
4-3	100 mm 4 in	250	200 mm 8 in
2	100 mm 4 in	300	250 mm 10 in
1	100 mm 4 in	400	330 mm 13 in
1/0	125 mm 5 in	500	356 mm 14 in
2/0	150 mm 6 in	600	381 mm 15 in
3/0-4/0	175 mm 7 in		



KA00186

Handles

Direct-mount handle
Ø5...Ø6 mm

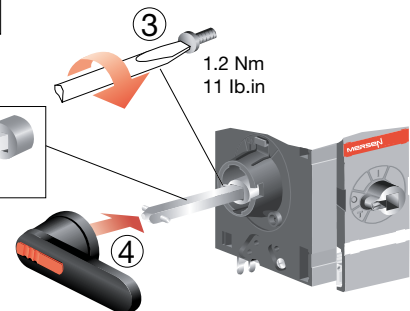
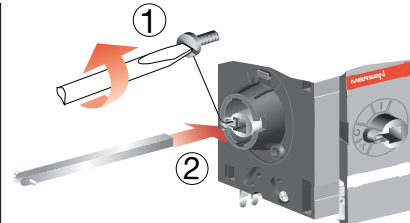


Note: Use protection against direct contact. For example:

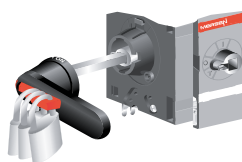
HB95_



SFBxxx



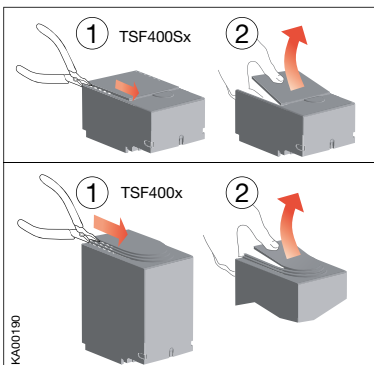
Externally-mounted handle
Ø5...Ø10 mm



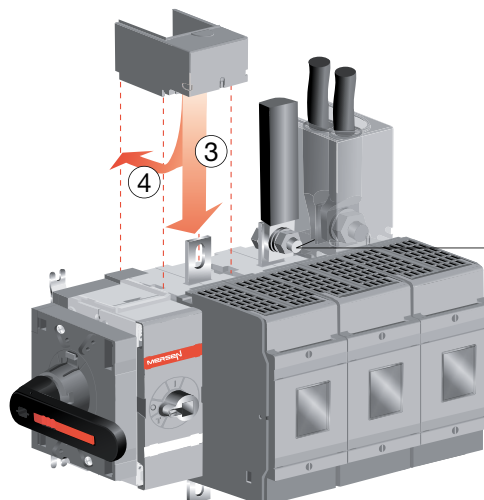
KA00195

KA00194

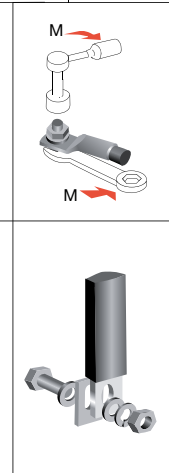
Terminal Shrouds



KA00190

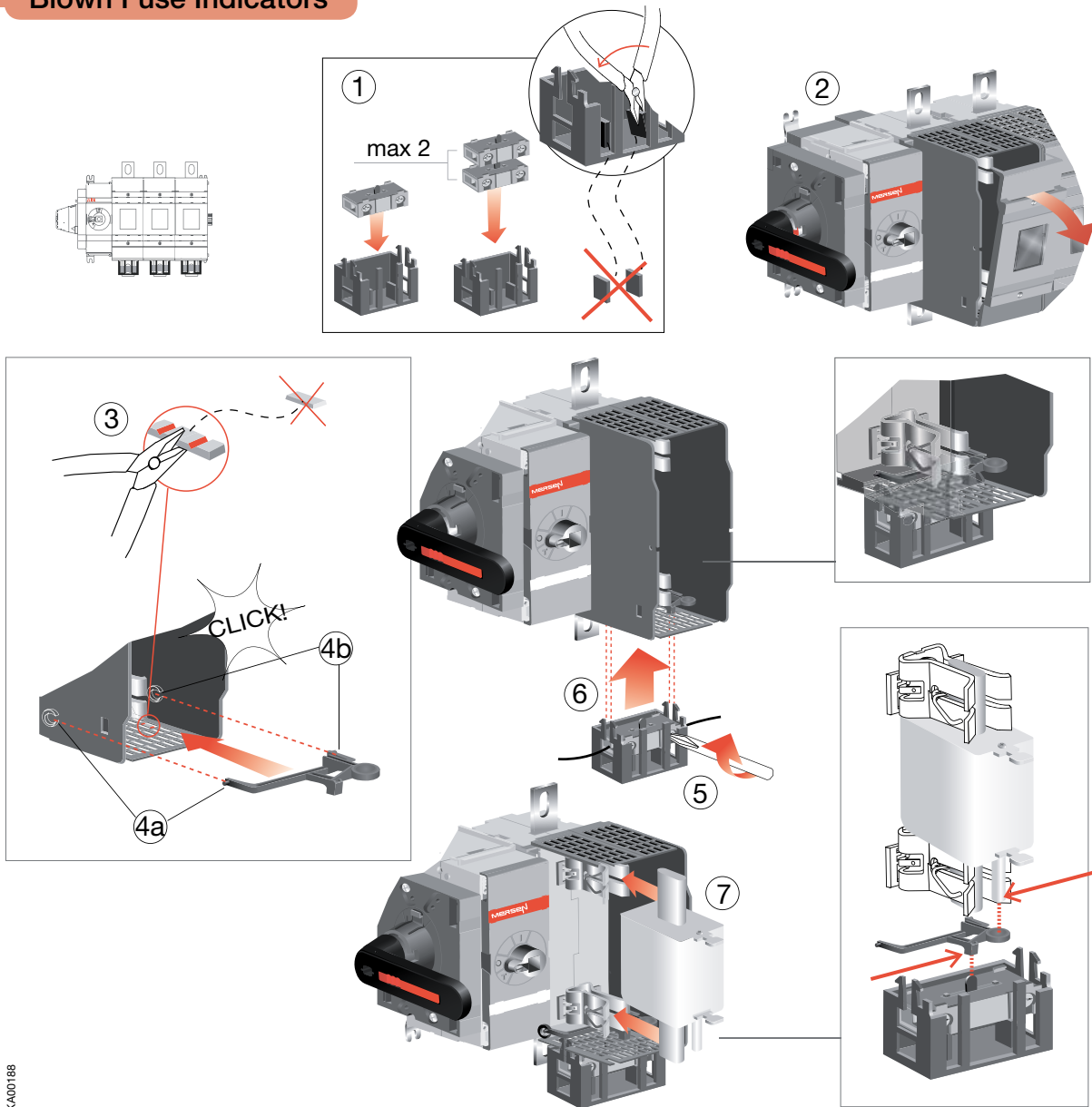


M10 30...44 Nm 266-390 lb.in

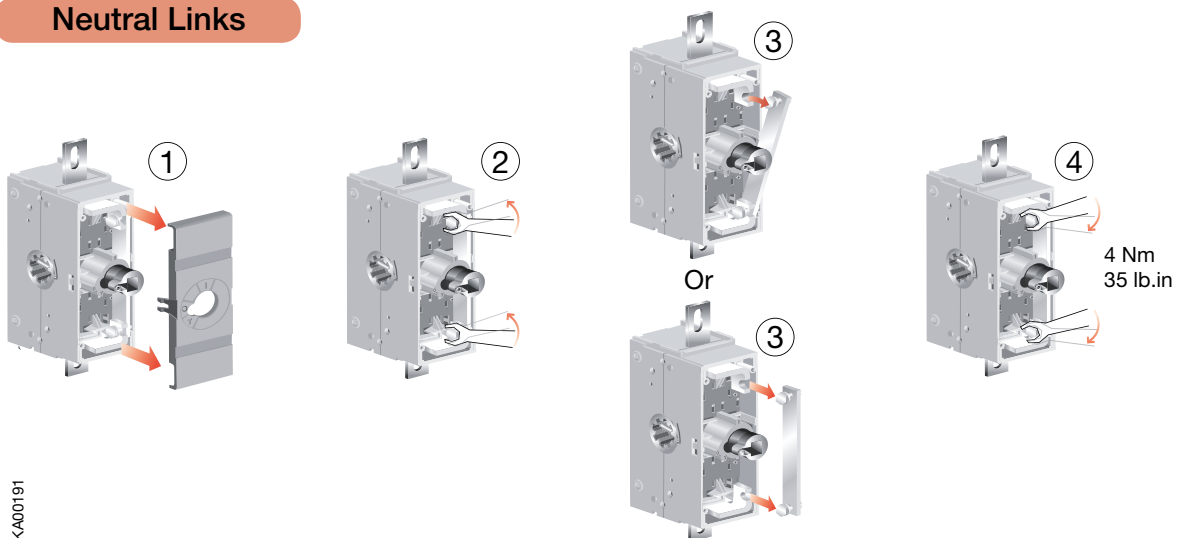


M315-400xS Fused

Blown Fuse Indicators



Neutral Links



M315-400xS Fused

Fuse Monitor

Note: Can be used only for switches having the gearbox on the right side.

④ OFMZX 2
2.8 x 0.8
0.11 x 0.03

⑤

③

①

② 0.4 Nm
3.5 lb.in

⑥

1x1.5 mm²
0.4 Nm
1x15 AWG
3.5 lb.in

⑦a For DIN-style

⑦b For BS-style

⑦c For Class J

KA00189

Externally-mounted Auxiliary contacts

① OEA28

②

1...8 pcs
OA1G10 (NO)
OA3G01 (NC)

④

CLICK!

③

Note: Can be used only for switches having the gearbox on the right side.

	0	1	0	Test	0
Main					
NO					
NC					

⑤

⑥

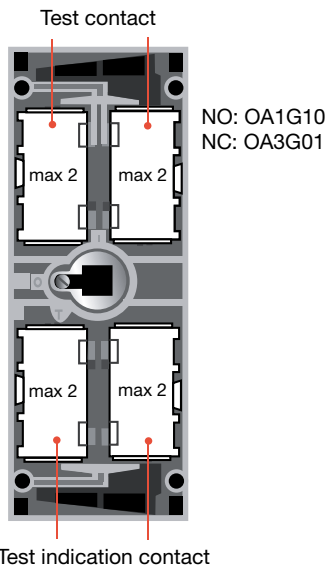
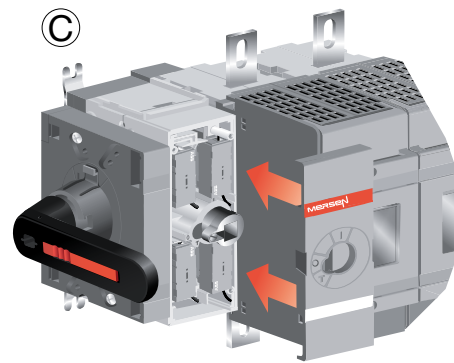
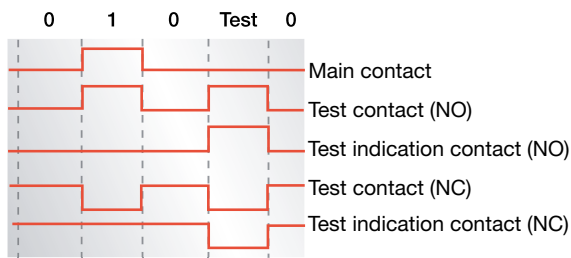
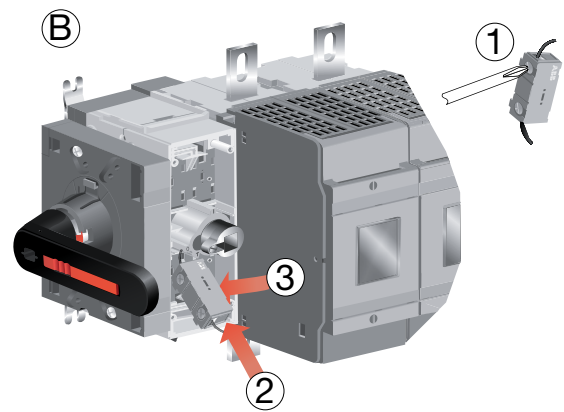
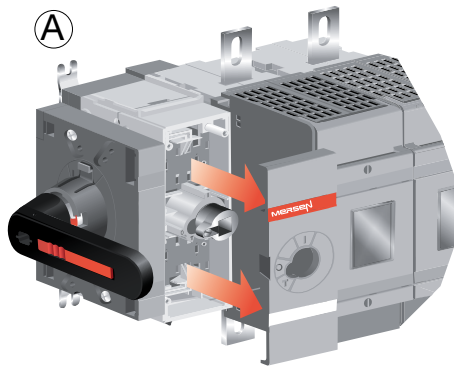
0.4 Nm
3.5 lb.in

0.4 Nm
3.5 lb.in

KA00192

M315-400xS Fused

Internally-mounted Auxiliary contacts



KA00193

