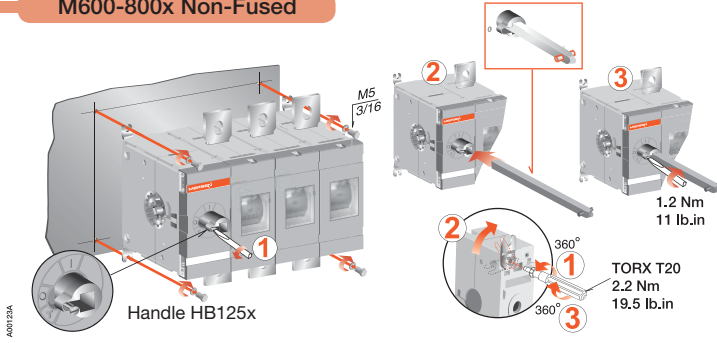
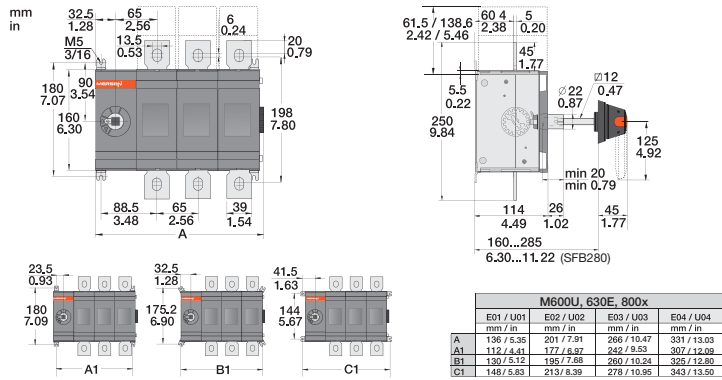


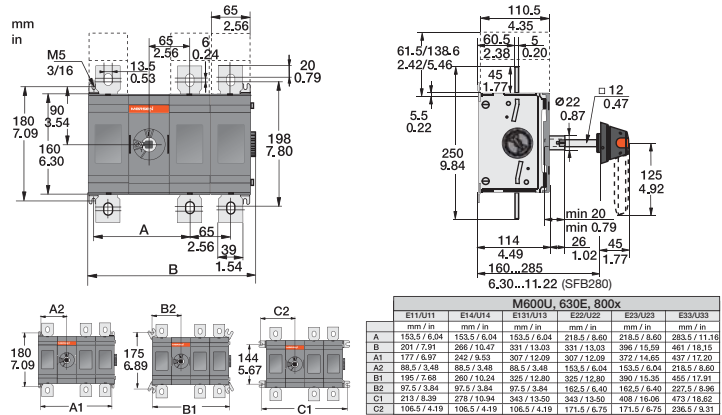
M600-800x Non-Fused



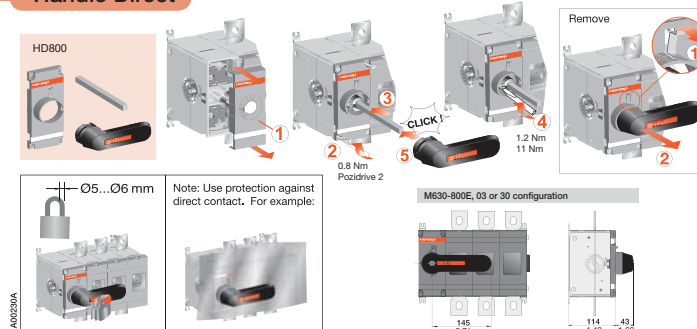
M600x - 800x 03 or 30 configuration



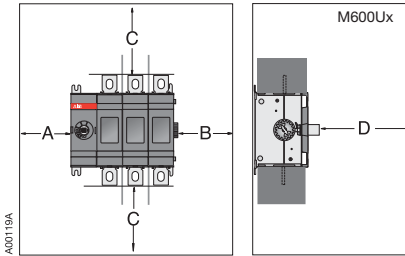
M600x - 800x 11 to 22 configurations



Handle Direct



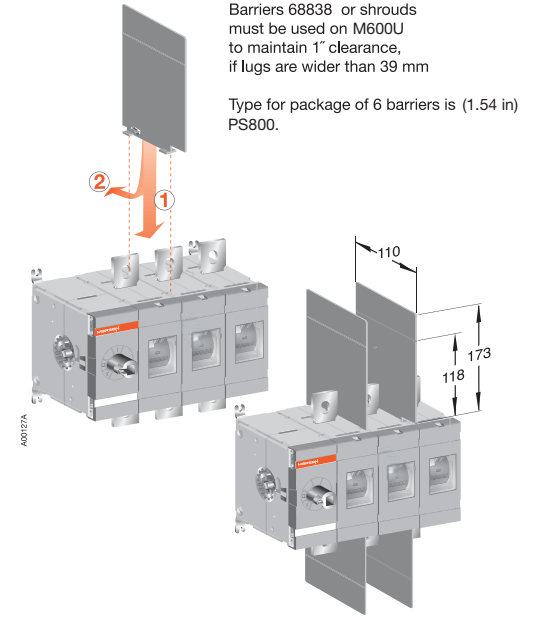
Clearances per UL98



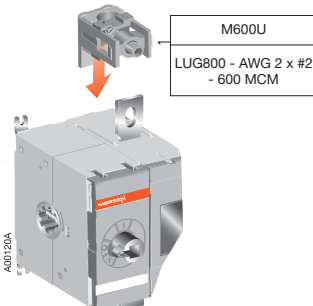
A	B	D
0	13 mm 0.5 in	13 mm 0.5 in
C Cable size		
AWG	MCM	
2	250	
100 mm 4 in	200 mm 8 in	
1	300	
100 mm 4 in	250 mm 10 in	
1/0	350	
125 mm 5 in	300 mm 12 in	
2/0	400	
150 mm 6 in	330 mm 13 in	
3/0-4/0	500	
175 mm 7 in	356 mm 14 in	
	600	
	381 mm 15 in	
Current	Height	Width
575 A	610	508
600 A	600	700
		Depth
		254
		300

Minimum enclosure size or equivalent volume

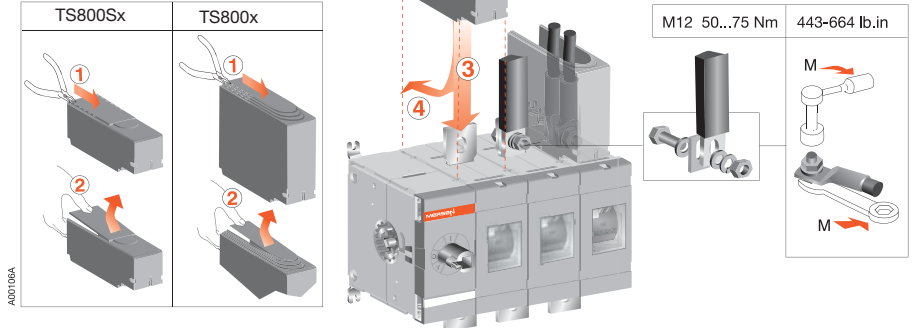
Barriers / Phase separators



Lugs



Terminal Shrouds



M600-800x Non-Fused

Internally mounted Auxiliary contacts

NO: OA1G10
NC: OA3G01

Test contact

Max 2

Max 2

Max 2

Max 2

Test indication contact

0 1 0 Test 0

0	1	0	Test	0
Main contact				
Test contact (NO)				
Test indication contact (NO)				
Test contact (NC)				
Test indication contact (NC)				

Remove $\sim 10^\circ$

4Px400 Fourth pole

1 Nm
9 lb.in

1 Nm
9 lb.in

A00107A

Label

A00125A

1

2

LON800S LOFF800S Locking mechanism

1

A

B

C

D

CLICK

2

A

B

Locking

4 Nm 35 lb.in
Torx 20

A

1.2 Nm
11 lb.in

NOTE:
min. 94 mm
3.7 in

B

HB125x

C

SFBxxx

Ø8 mm 0.32 in

A0017

Externally mounted Auxiliary contacts

1

2

3

4

CLICK!

5

6

0.4 Nm

0.4 Nm

A00126A

1...8 pcs
OA1G10 (NO)
OA3G01 (NC)

0	1	0	Test	0
Main				
NO				
NC				

OEA 28