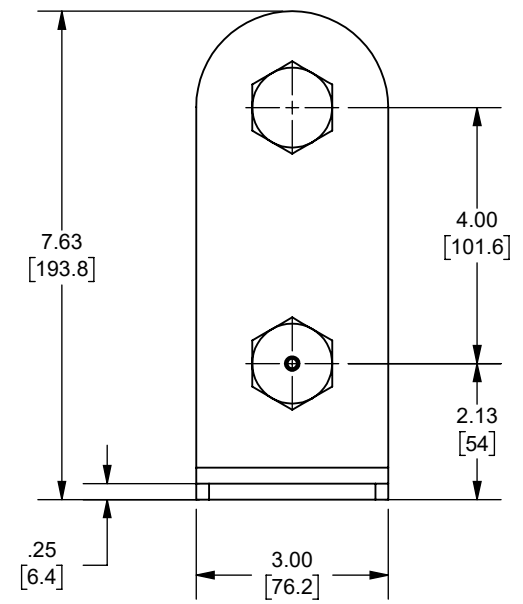
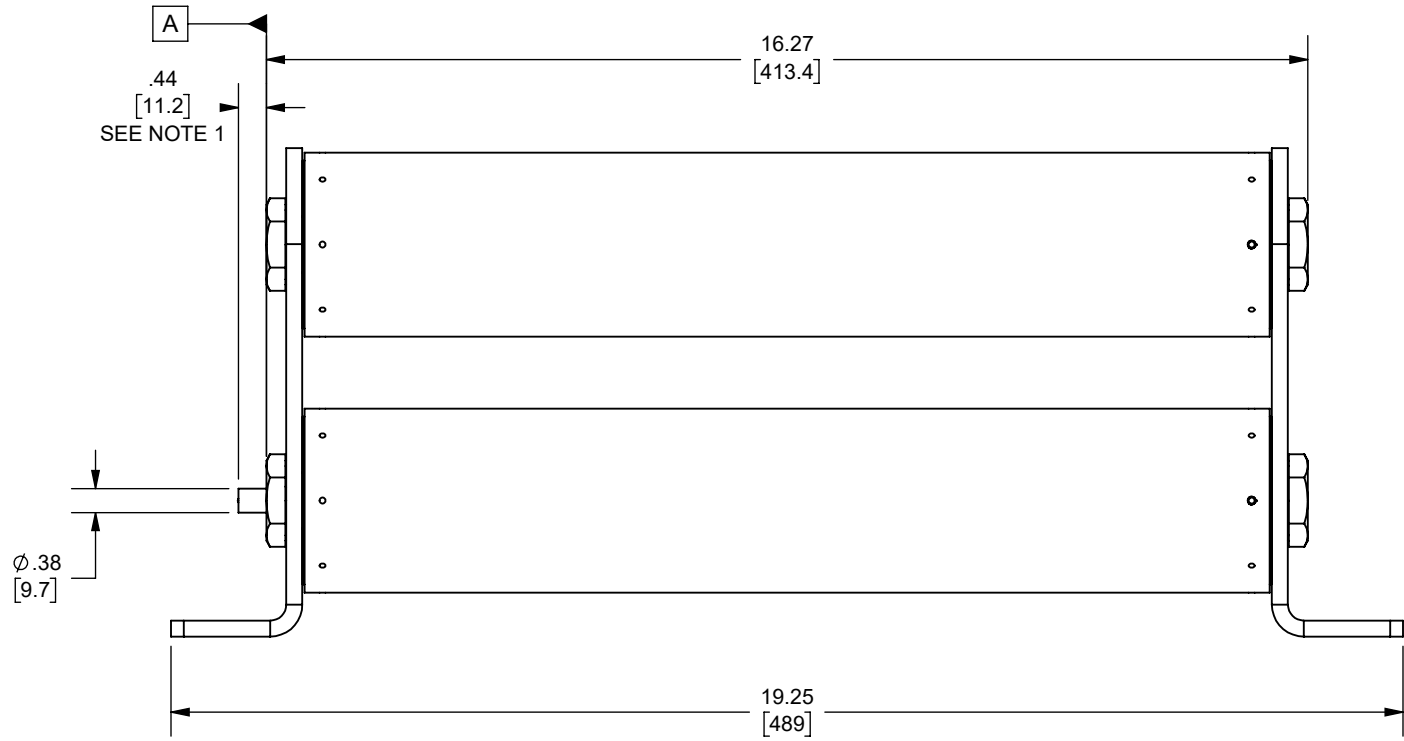
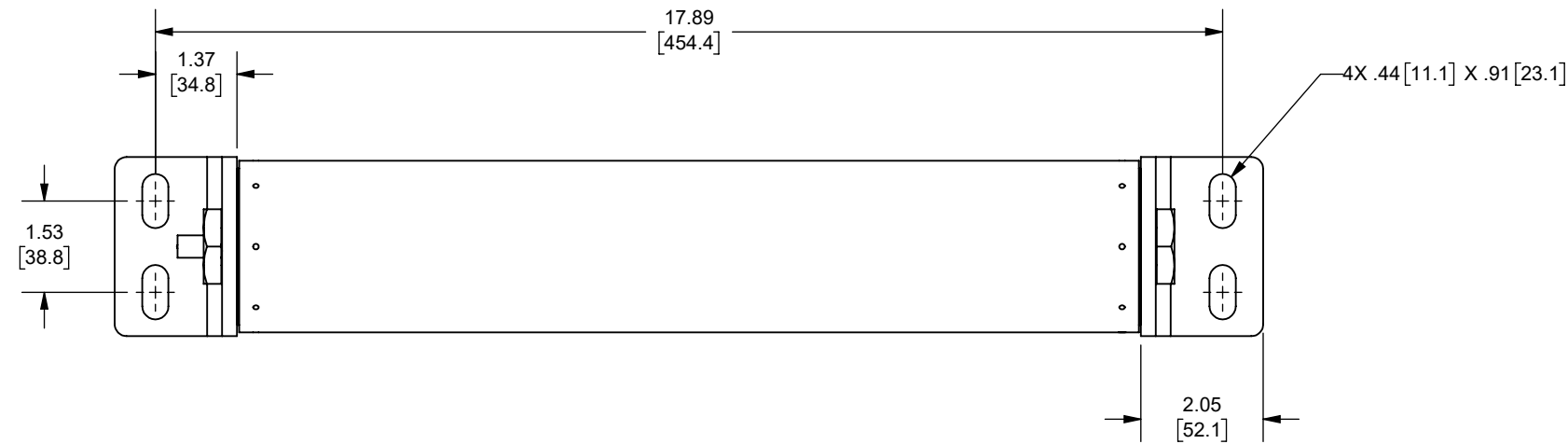


REV.	DATE	ECO	DESCRIPTION	BY	CK	APP
A	7/23/2004	N/A	REDRAWN AND UPDATED TO CURRENT STANDARDS	ELO	N/A	N/A
B	1/8/2024	18032	UPDATED TITLE BLOCK, DIM .44 [11.2] WAS .50 [12.7], 1 LBS FORCE WAS 2 LBS FORCE	YF	N/A	SEE ECO



OUTLINE DIMENSIONS
NOT TO BE USED FOR PRODUCTION

NOTES:

- 1. INDICATOR IS FLUSH WITH SURFACE **A** BEFORE FUSE OPENS
INDICATOR EXTENDS .44 IN. [11.2mm] AFTER FUSE OPENS AND EXERTS
AN 1 LBF AT THE END OF TRAVEL

A072B2DAR0-24R
A072B2DAR0-18R
CATALOG NUMBER

Approval stage / Etat d'approbation: APPROUVÉ POUR FABRICATION / APPROVED FOR MANUFACTURING	Product Class:/ Product Type: MEDIUM VOLTAGE R-RATED	Product amp rating:/ Voltage rating: 18-24R 7.2kV	Weight : Masse :
Initial ECO / ECO initiale: ECO-18032-000	Title / Titre: OUTLINE A072B2DAR0-(18,24)R		
Draw by / Dessiné par: Yadyra Fang	Date : 6/14/2024	Drawing / de dessin: 24397	
Checked by / Vérifié par: Luis ARMENTA	Date : 6/14/2024	Part / Article: SEE TABLE	Rev : Rév : B
Electrical Power 374 MERRIMAC STREET NEWBURYPORT, MA 01950	Éch / Scale : 1:3 Format / Size : B	Page : 1/1	
Ce plan strictement confidentiel est la propriété exclusive de la société MERSEN sans l'autorisation écrite de laquelle il ne peut être ni reproduit, ni copié, ni communiqué à des tiers. This drawing and specifications there on is property of MERSEN and shall not be reproduced or copied or used in whole or in part as the base for manufacture or sale of item without written permission.			