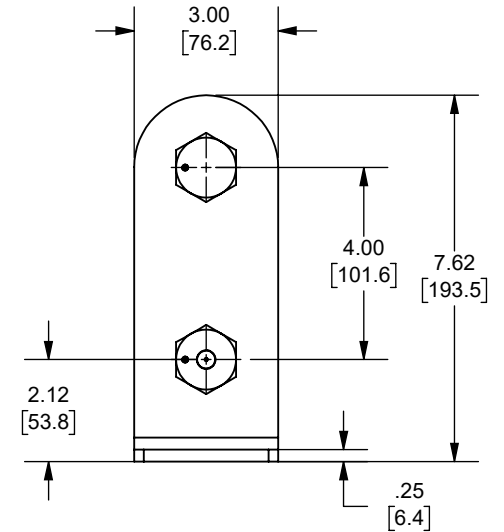
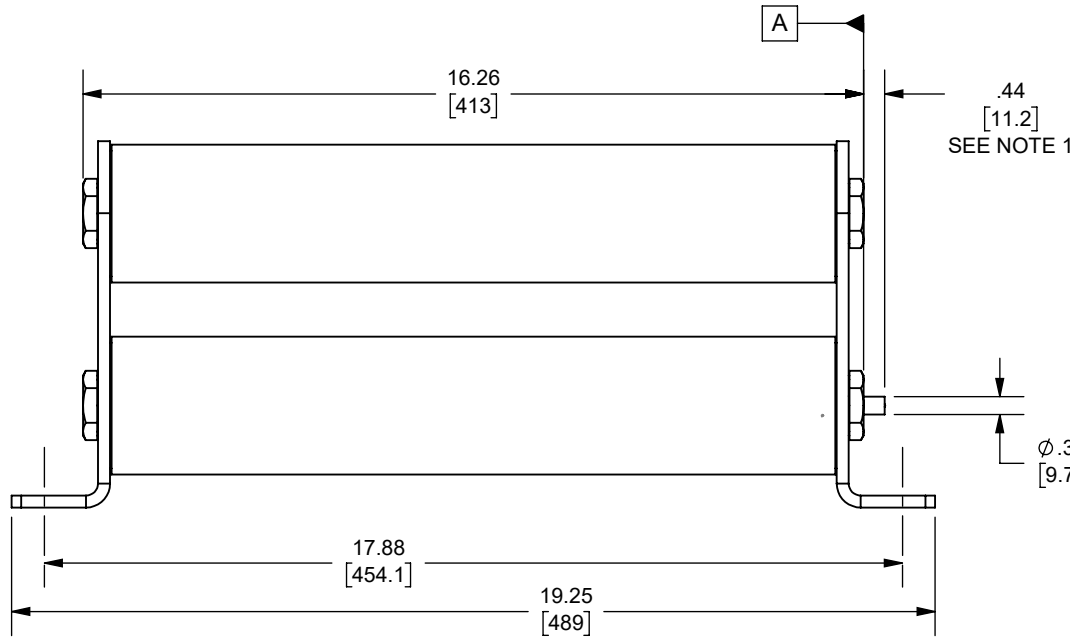


REV.	DATE	ECO	DESCRIPTION	BY	CK	APP
B	2/25/2008	N/A	UPDATED OUTLINE FORMAT	LDB	N/A	SEE ECO
C	5/22/2024	18032	REDRAWN FROM CADRA. UPDATED TITLE BLOCK, ADDED NOTES. DIM .44 [11.2] WAS .50[12.7], 1 LBS FORCE WAS 2 LBS FORCE	YF	N/A	SEE ECO



OUTLINE DIMENSIONS
NOT TO BE USED FOR PRODUCTION

DIMENSIONS IN []
ARE MILLIMETERS

NOTES:

1. INDICATOR IS FLUSH WITH SURFACE **A** BEFORE FUSE OPENS INDICATOR EXTENDS .44 IN. [11.2mm] AFTER FUSE OPENS AND EXERTS AN 1 LBF AT THE END OF TRAVEL.

Approval stage / Etat d'approbation: APPROUVÉ POUR FABRICATION / APPROVED FOR MANUFACTURING	Product Class:/ Product Type:	MEDIUM VOLTAGE	MOTOR CIRCUIT
Initial ECO / ECO intiale:	Product amp rating:/ Voltage rating:	18-38R	5.5kV
Draw by / Dessiné par: Yadyra Fang	Date :	6/14/2024	
Checked by / Vérifié par: Luis ARMENTA	Date :	6/14/2024	
Electrical Power 374 MERRIMAC STREET NEWBURYPORT, MA 01950	Éch / Scale : Format / Size :	1:4 A	
Title / Titre: OUTLINE A051B2DAR0-(18-38)R		Weight : Masse :	
Drawing / de dessin: 24411		Rev : Rév : C	
Part / Article: SEE TABLE		Page : 1/1	

A051B2DAR0-38R
A051B2DAR0-32R
A051B2DAR0-24R
A051B2DAR0-18R
CATALOG NUMBER



Ce plan strictement confidentiel est la propriété exclusive de la société MERSEN sans l'autorisation écrite de laquelle il ne peut être ni reproduit, ni copié, ni communiqué à des tiers.
This drawing and specifications there on is property of MERSEN and shall not be reproduced or copied or used in whole or in part as the base for manufacture or sale of item without written permission.