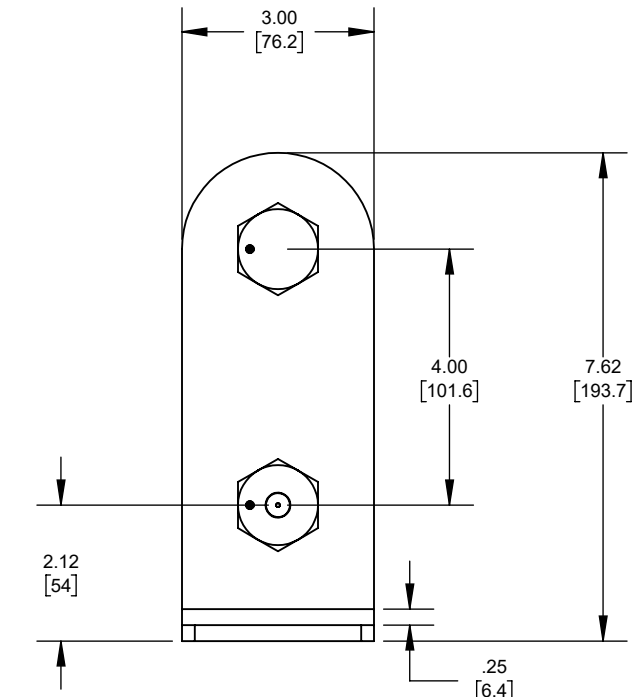
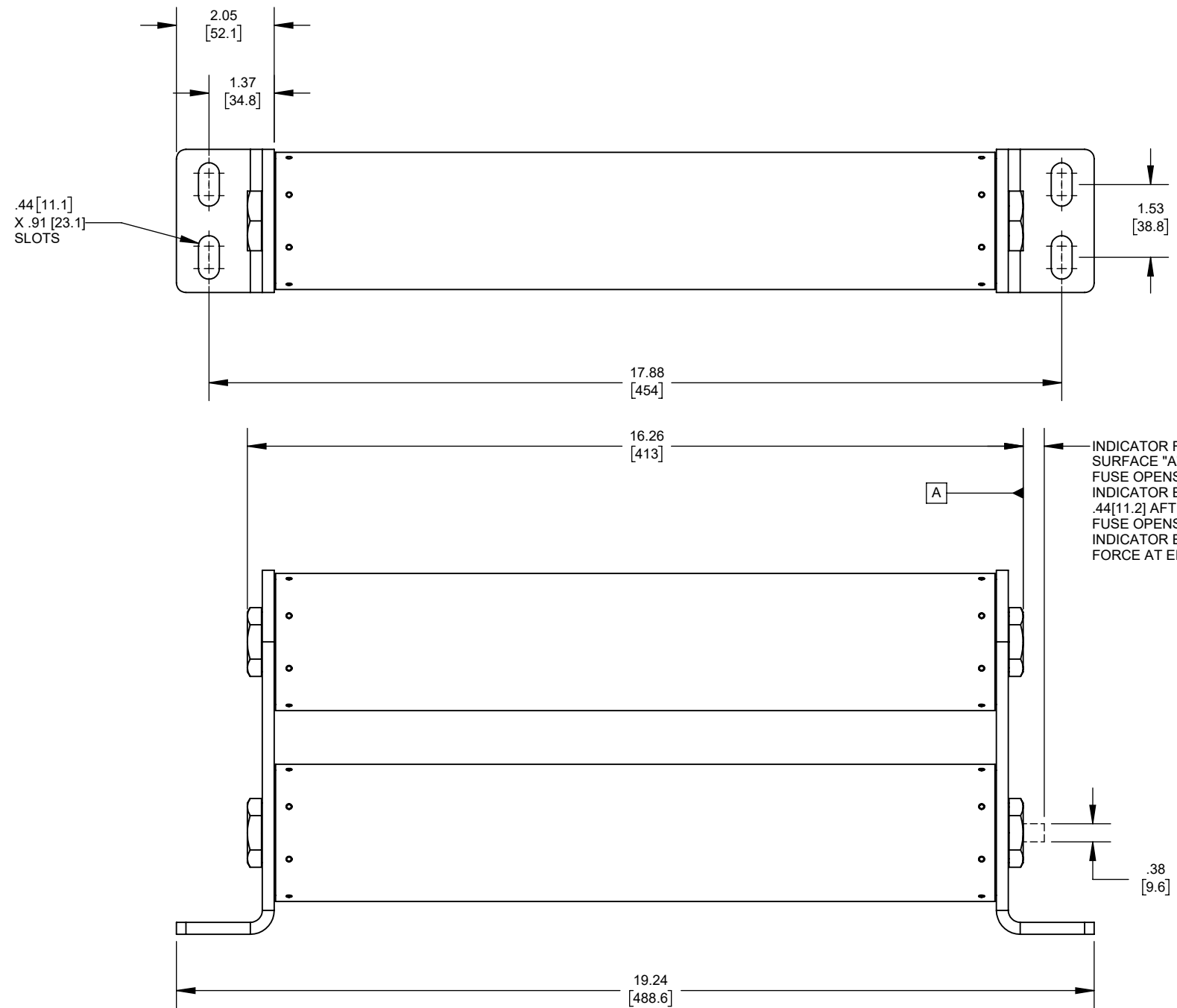


REV.	DATE	ECO	DESCRIPTION	BY	CK	APP
-	6/14/2001	N/A	INITIAL RELEASE	LAS	N/A	N/A
B	10/31/2023	17857	REDRAWN FROM CADRA, UPDATED SCALE, .44[11.2] WAS .50in(12.7mm) AND 1 LB WAS 2 LBS	LA	N/A	SEE ECO



OUTLINE DIMENSIONS
NOT TO BE USED FOR PRODUCTION
DIMENSIONS IN [] ARE MILLIMETERS

A055B2DAR0-450E	450E
A055B2DAR0-400E	400E
A055B2DAR0-350E	350E
A055B2DAR0-300E	300E
A055B2DAR0-250E	250E
CATALOG NUMBER	RATING

Approval stage / Etat d'approbation: APPROUVÉ POUR FABRICATION / APPROVED FOR MANUFACTURING	Product Class:/ Product Type: MV E-RATED BOLT-IN FUSE AMP-TRAP	Weight : Masse :
Initial ECO / ECO initiale: ECO-17857-000	Product amp rating:/ Voltage rating: 250-450E 5.5kV MAX	
Draw by / Dessiné par: Luis ARMENTA	Date : 11/14/2023	
Checked by / Vérifié par: Yadyra Fang	Date : 11/14/2023	Rev : Rév : B
Electrical Power 374 MERRIMAC STREET NEWBURYPORT, MA 01950	Éch / Scale : 1:3 Format / Size : B	Title / Titre: OUTLINE A055B2DAR0-(250-450)E Drawing / de dessin: 700666 Part / Article: SEE TABLE Page : 1/1

Ce plan strictement confidentiel est la propriété exclusive de la société MERSEN sans l'autorisation écrite de laquelle il ne peut être ni reproduit, ni copié, ni communiqué à des tiers.
This drawing and specifications there on is property of MERSEN and shall not be reproduced or copied or used in whole or in part as the base for manufacture or sale of item without written permission.

