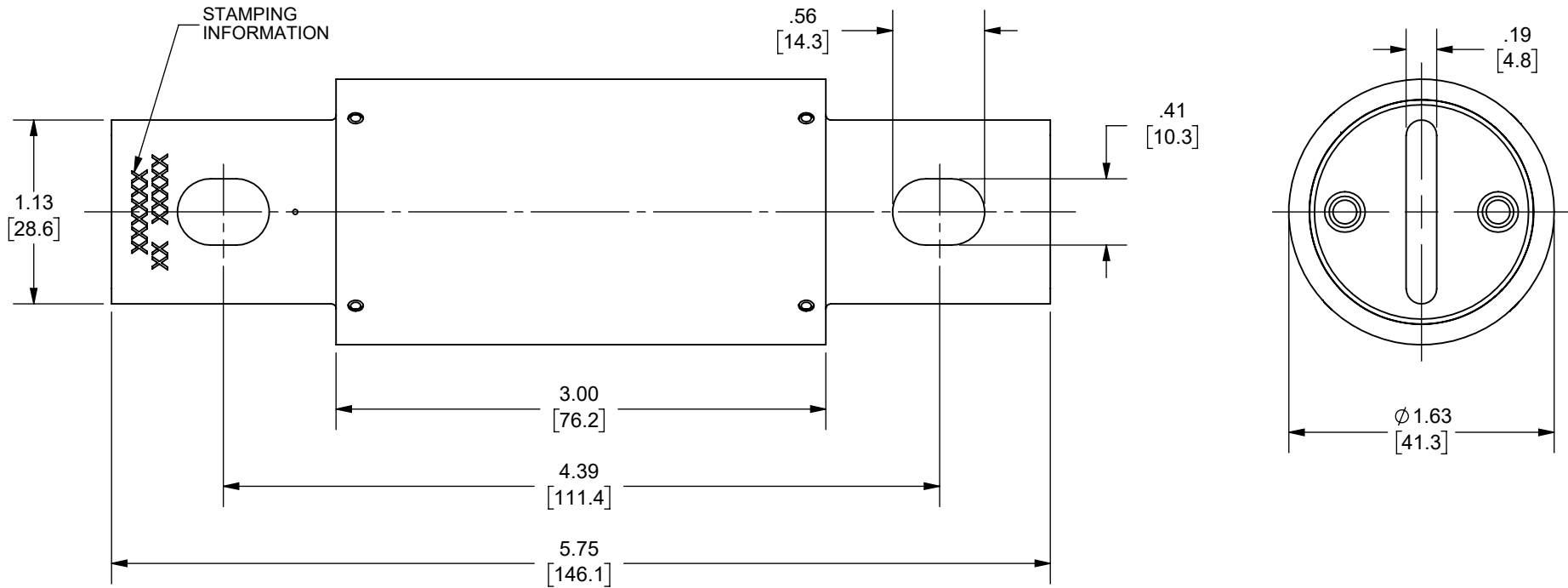
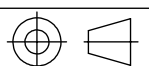


REV.	DATE	ECO	DESCRIPTION	BY	CK	APP
C	3/10/2023	17393	ADDED MDC10M(70-200)B & UPDATED FORMAT	ABT	N/A	SEE ECO
D	8/28/2023	17758	REMOVED MDC10M(70-200)B	ABT	N/A	SEE ECO



OUTLINE DIMENSIONS  
NOT TO BE USED FOR PRODUCTION

DIMENSIONS IN [ ]  
ARE MILLIMETERS

Approval stage / Etat d'approbation: <b>APPROUVÉ POUR FABRICATION / APPROVED FOR MANUFACTURING</b>	Product Class:/ Product Type:	CLASS J PHOTOVOLTAIC FUSE	
	Product amp rating:/ Voltage rating:	70 - 200A	1000VDC
Initial ECO / ECO intiale:	<b>ECO-17393-000</b>	Title / Titre:	Weight : Masse :
Draw by / Dessiné par: <b>Alma Balcazar</b>	Date : <b>9/6/2023</b>	Drawing / de dessin: <b>701827</b>	
Checked by / Vérifié par: <b>Yadyra Fang</b>	Date : <b>9/6/2023</b>		
Electrical Power 374 MERRIMAC STREET NEWBURYPORT, MA 01950	Éch / Scale : <b>1:1</b> Format / Size : <b>A</b>	Part / Article: <b>SEE TABLE</b>	Page : 1/1

HP10J200
HP10J160
HP10J125
HP10J100
HP10J80
HP10J70
CATALOG NUMBER



Ce plan strictement confidentiel est la propriété exclusive de la société MERSEN sans l'autorisation écrite de laquelle il ne peut être ni reproduit, ni copié, ni communiqué à des tiers.  
This drawing and specifications there on is property of MERSEN and shall not be reproduced or copied or used in whole or in part as the base for manufacture or sale of item without written permission.