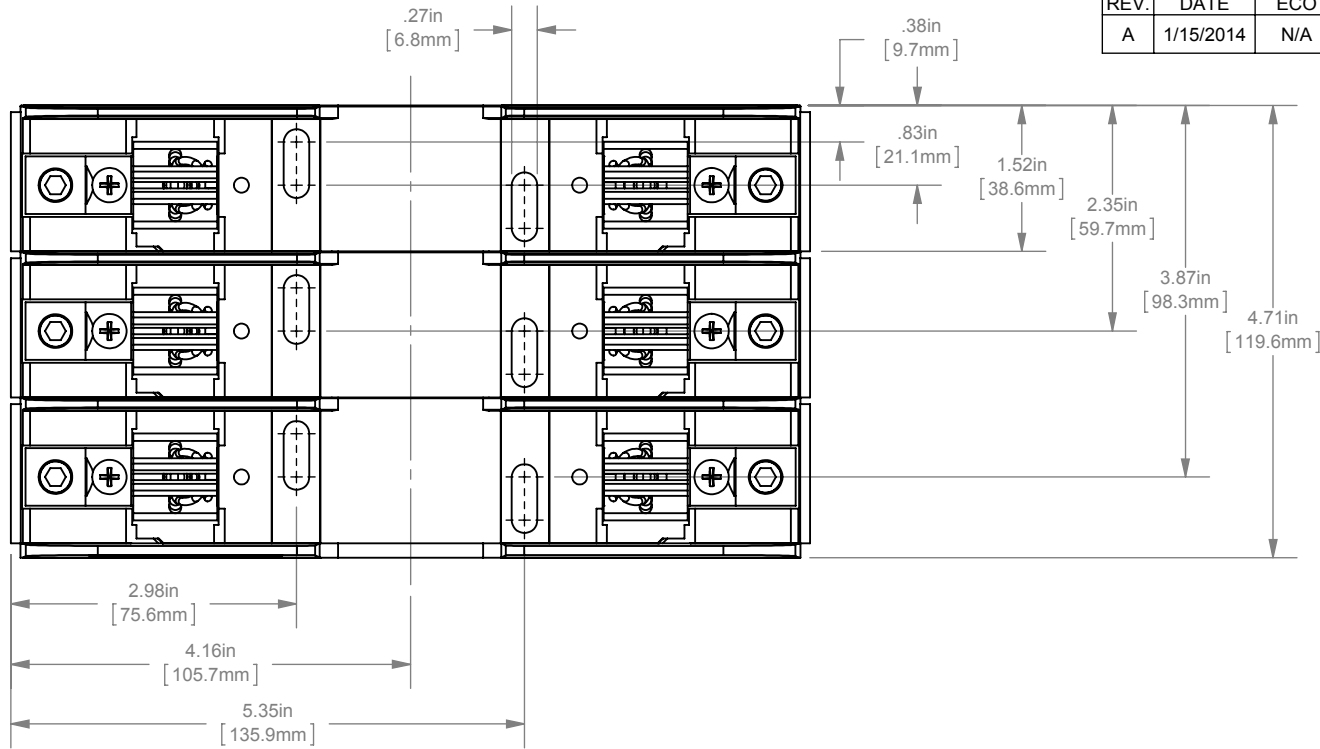
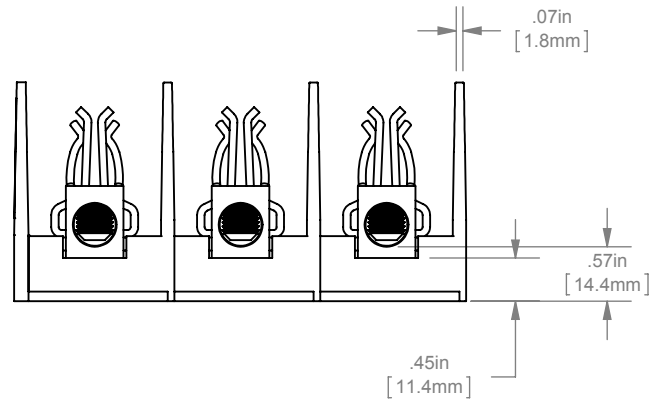
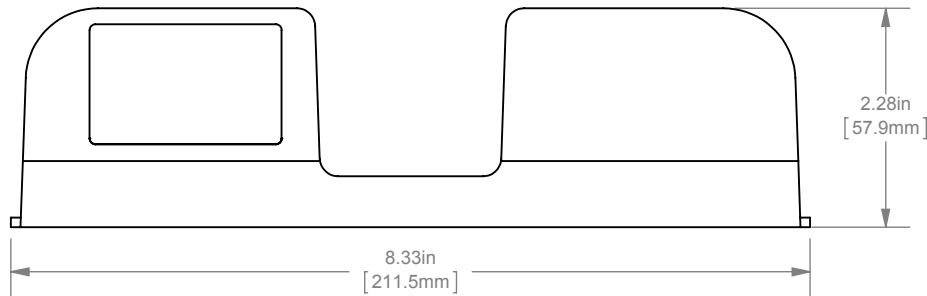


REV.	DATE	ECO	DESCRIPTION	BY	CK	APP
A	1/15/2014	N/A	REDRAWN IN SOLIDWORKS	GDR	N/A	N/A



NOTES: UNLESS OTHERWISE SPECIFIED

1. P/N 21008(R) USES SLOTTED SET SCREW
P/N 21038(R) USES HEX SET SCREW.
2. MATERIAL COMPOSITION AND RATING:
POLYCARBONATE -125° C RTI.
3. U/L FILE NO. E52283, GUIDE NO. IZLT
4. CSA REPORT NO. LR32169.



21038R	200	R	120	60/75
20138	10	H/K	120	60/75
21008R	200	R	50	60/75
21008	10	H/K	50	60/75
P/N	RMS SYM RATING	FUSE CLASS	TORQUE (IN-LBS)	°C WIRE

DIMENSIONS IN [] ARE MILLIMETERS



MERSEN USA NEWBURYPORT-MA, LLC
374 MERRIMAC STREET
NEWBURYPORT, MA 01950

21008(R), 21038(R)

FUSE BLOCK, 3P CLASS HKR

100A 250V

OUTLINE DIMENSIONS
NOT TO BE USED FOR PRODUCTION

05C0251

PRODUCT MANAGER

SIGN:

DATE:

DESIGN ENGINEER

SIGN:

DATE: (SEE ECO)