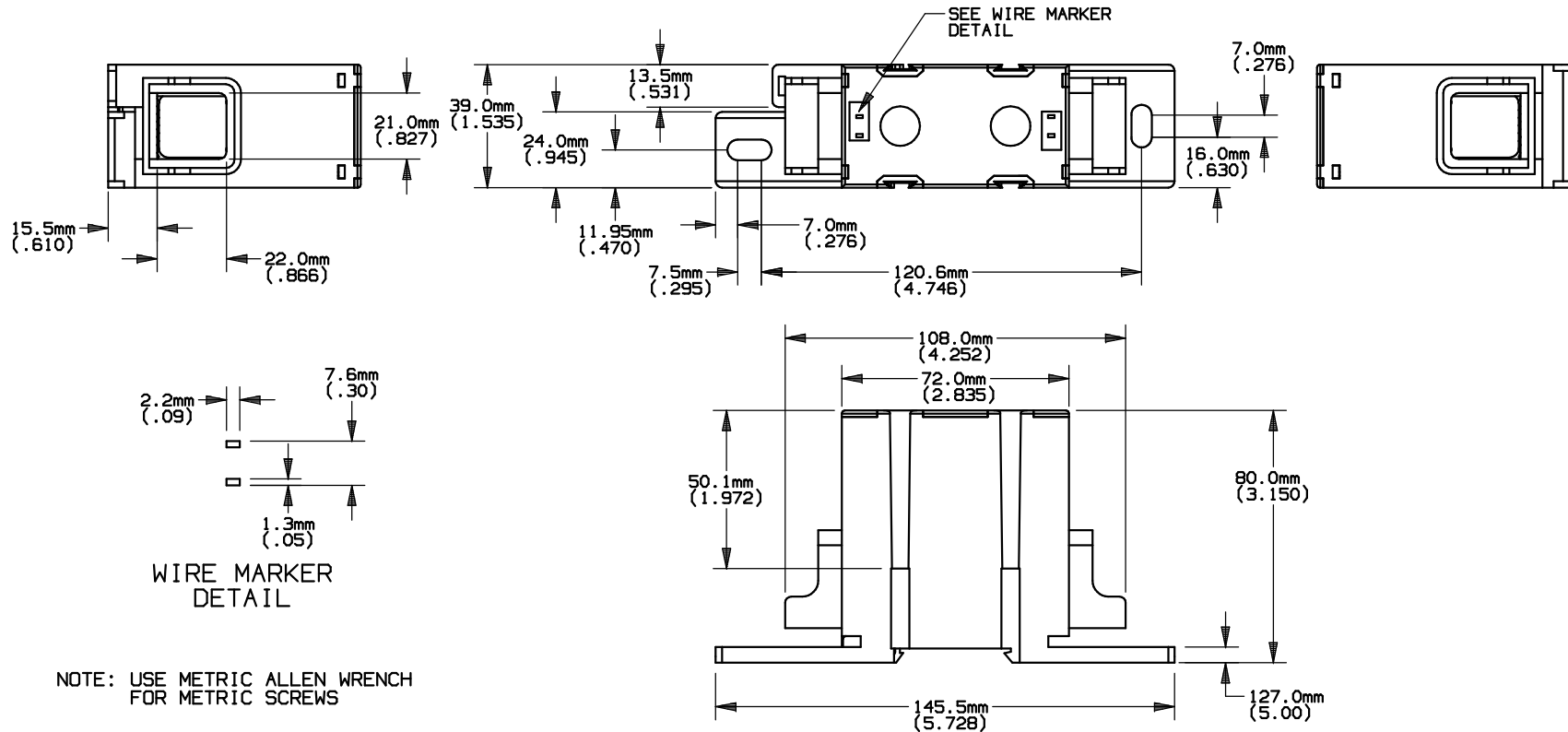


REV	DATE	ECO	DESCRIPTION	BY	CK	APP
-	8/6/03	N/A	INITIAL RELEASE	LAS	N/A	N/A



NOTE: USE METRIC ALLEN WRENCH FOR METRIC SCREWS

P/N	CONN. MAT'L.	AMP RATING	LINE				LOAD				UL		CSA	
			RANGE	TORQUE	RANGE	TORQUE	RANGE	TORQUE	RANGE	TORQUE	FILE #	GUIDE #	FILE #	CLASS
			AWG/kcmil	in/lbs	mm <sup>2</sup>	N-m	AWG/kcmil	in/lbs	mm <sup>2</sup>	N-m				
FSPDB4A	AL	335	400-#6	400-00 220 0-#2 170 #3-#6 130	185-16	185-70 24.9 50-35 19.2 25-16 14.7	400-#6	400-00 220 0-#2 170 #3-#6 130	185-16	185-70 24.9 50-35 19.2 25-16 14.7	E73571	XCRF2	69363	6228
FSPDB4C	Cu	335	400-#6	400-00 220 0-#6 90	185-16	185-70 24.9 50-16 10.2	400-#6	400-00 220 0-#6 90	185-16	185-70 24.9 50-16 10.2	E73571	XCRF2	69363	6228



MERSEN USA NEWBURYPORT-MA, LLC  
374 MERRIMAC STREET  
NEWBURYPORT, MA 01950

FINGER-SAFE  
POWER DISTRIBUTION BLOCK  
600V

OUTLINE DIMENSIONS  
NOT TO BE USED FOR PRODUCTION

PRODUCT MANAGER

DESIGN ENGINEER

SIGN:  
DATE:

SIGN:  
DATE:

{1}400-#6 X {1}400-#6  
{1}185-16mm<sup>2</sup> X {1}185-16mm<sup>2</sup>

701004