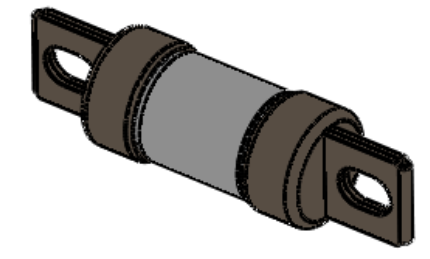
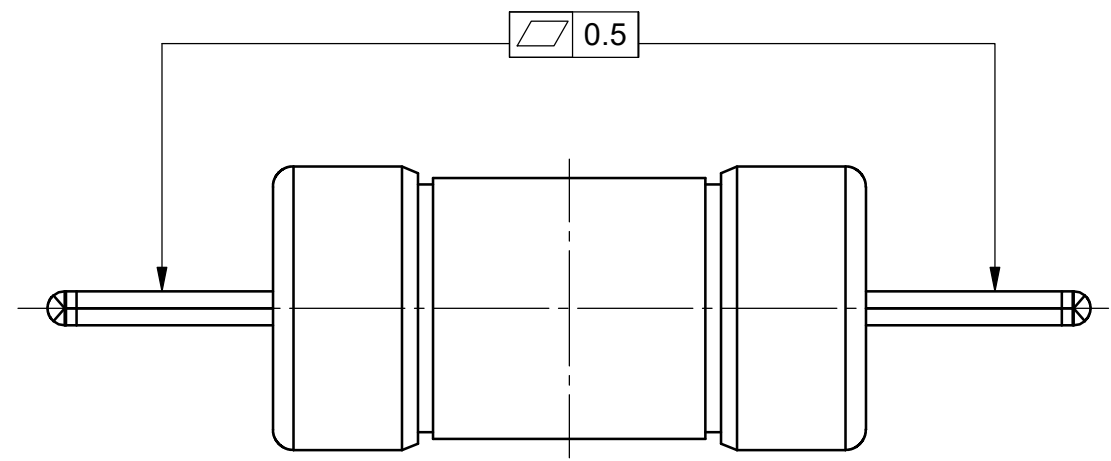
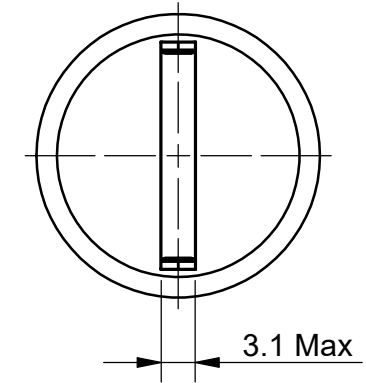
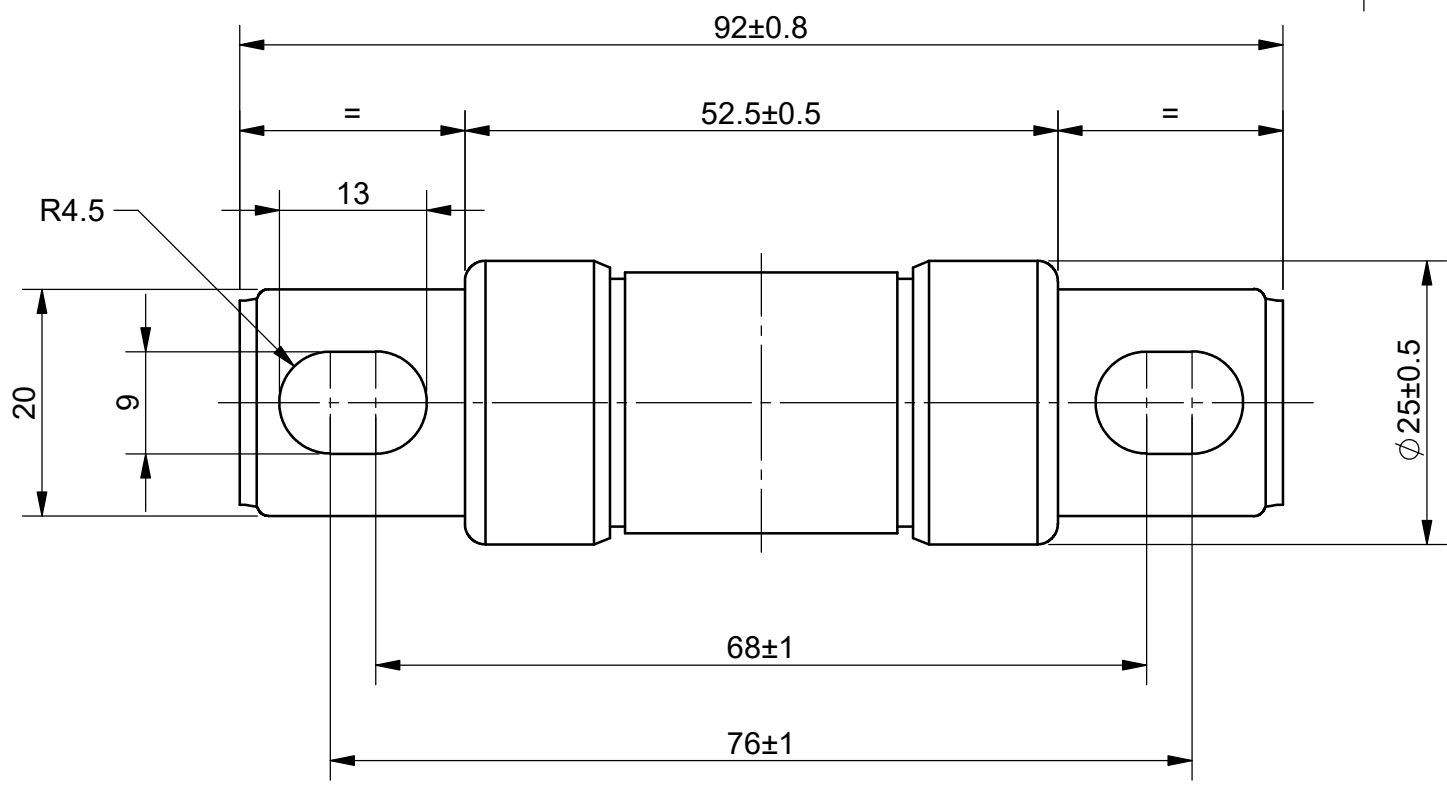


1 2 3 4 5 6 7 8

Dates	Rev.	Modification summarize	ECR N°	Draw by	Requested by
2020/9/8	A	Release	1780	WHY	N.B.

A
B
C
D
E
F

A
B
C
D
E
F



MEV50A250-25G	250
MEV50A200-25G	200
MEV50A150-25G	150
MEV50A125-25G	125
MEV50A100-25G	100
P/N	Current(A)

- NOTES:**
1. ENDCAPS ARE COPPER T2 H02 / Cu ETP R240 - TIN PLATED >6μm.
 2. TERMINALS ARE COPPER T2 H02 / Cu ETP R240 - TIN PLATED >6μm.
 3. BODY MATERIAL IS GMG NEMA G-9 / G-5.
 4. WEIGHT ABOUT 75 g.

Material: SEE NOTE 1, 2 & 3		General tolerances except otherwise specified: ISO 2768 mK	
Surface finishing: SEE NOTE 1&2		Weight: 75 g	Scale: 3:2
Date: 2020/08/06	Drawn by: 王慧元 WANG	Approved by: Song CHEN	
This drawing and specifications are property of MERSEN and shall not be reproduce, copied, or used in whole or in part for manufacture or sale of item without written permission.			
MEV50A, SIZE 25G		MSC009809	
		A3	SH 1 of 1
		SEE TABLE	A

1 2 3 4 5 6 7 8

Mersen Drawing template A3 :00