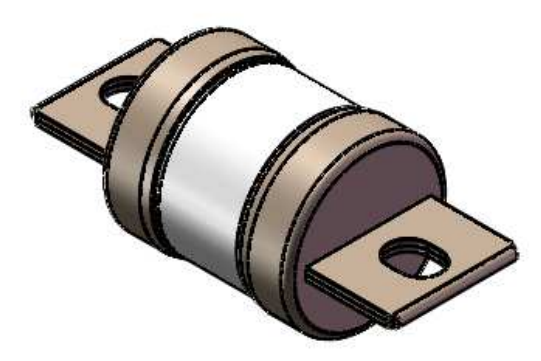
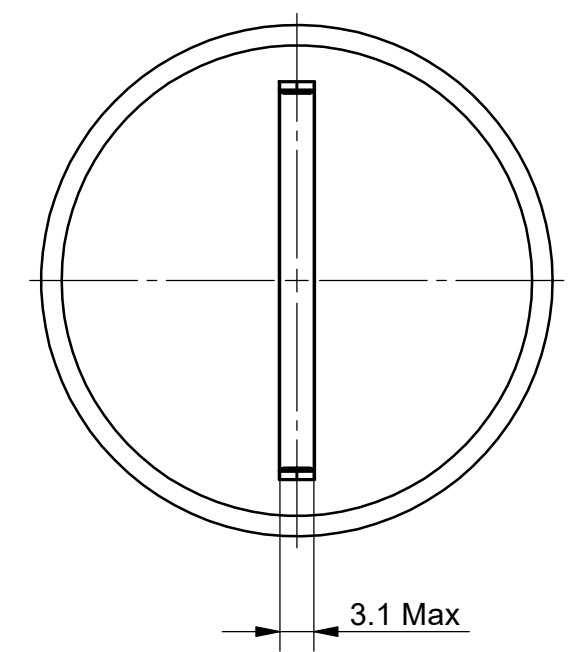


Dates	Rev.	Modification summarize	ECR N°	Draw by	Requested by
2020/9/8	A	Release	1780	WHY	N. B.



MEV50A600-45G	600
MEV50A550-45G	550
MEV50A500-45G	500
MEV50A450-45G	450
MEV50A400-45G	400
P/N	Current(A)

Material: SEE NOTE 1, 2 & 3	General tolerances except otherwise specified: ISO 2768 mK	
Surface finishing: SEE NOTE 1&2	Weight: 235 g	Scale: 3:2
Date: 2020/07/8	Drawn by: 王慧元 WANG	Approved by: Song CHEN

- NOTES:
1. ENDCAPS ARE COPPER T2 H02 / Cu ETP R240 - TIN PLATED >6µm.
  2. TERMINALS ARE COPPER T2 H02 / Cu ETP R240 - TIN PLATED >6µm.
  3. BODY MATERIAL IS GMG NEMA G-9 / G-5.
  4. WEIGHT ABOUT 235 g.

This drawing and specifications are property of MERSEN and shall not be reproduce, copied, or used in whole or in part for manufacture or sale of item without written permission.

**MERSEN Shanghai**

**MEV50A, SIZE 45G**

**MSC011901**

A3	SH 1 of 1	SEE TABLE	A
----	-----------	-----------	---