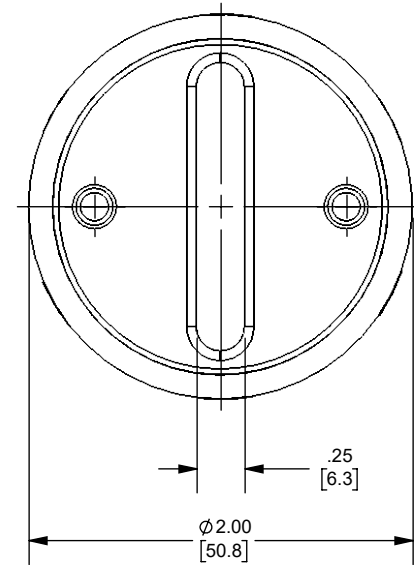
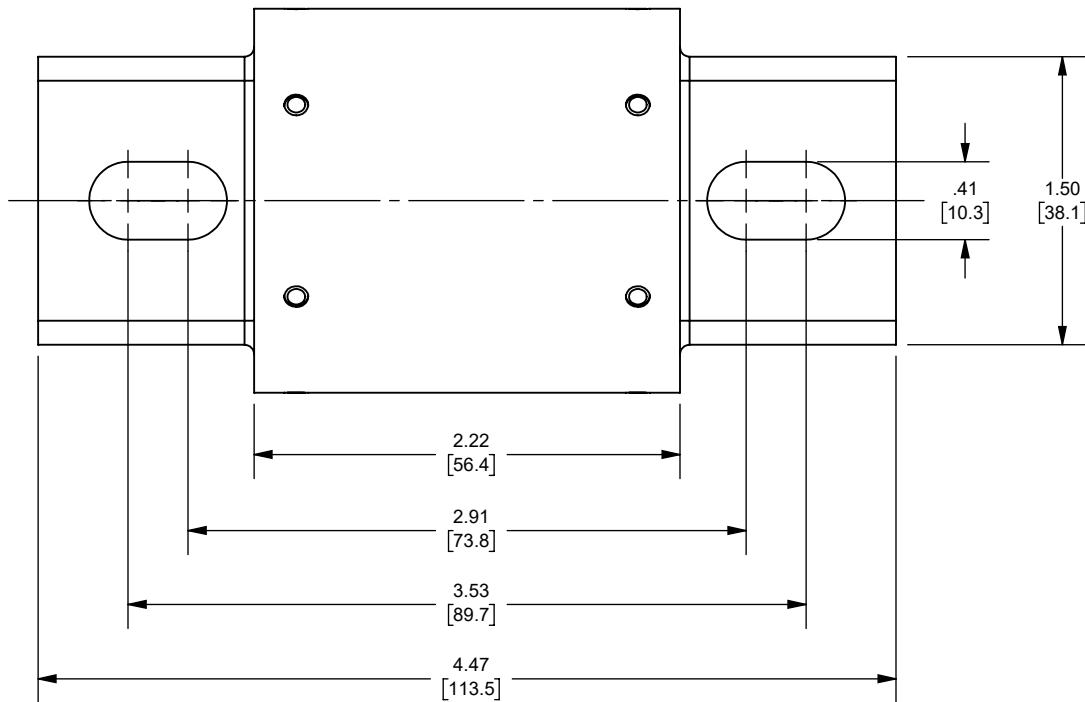
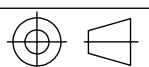



REV.	DATE	ECO	DESCRIPTION	BY	CK	APP
A	5/2/2023	17405	INITIAL RELEASE	ABT	N/A	SEE ECO



OUTLINE DIMENSIONS
NOT TO BE USED FOR PRODUCTION

DIMENSIONS IN []
ARE MILLIMETERS

<i>Approval stage / Etat d'approbation:</i> APPROUVÉ POUR FABRICATION / APPROVED FOR MANUFACTURING		<i>Product Class:/</i> DC FUSE	
<i>Product Type:</i>		450 - 600A 700VDC	
<i>Product amp rating:/</i>		450 - 600A 700VDC	
<i>Voltage rating:</i>		450 - 600A 700VDC	
<i>Initial ECO / ECO intiale:</i> ECO-17405-000		<i>Title / Titre:</i> OUTLINE D70QS(450-600)-4	
<i>Draw by / Dessiné par:</i> Alma Balcazar		<i>Date :</i> 6/9/2023	
<i>Checked by / Vérifié par:</i> Yadyra Fang		<i>Date :</i> 6/12/2023	
<i>Drawing / de dessin:</i> OUT-1208098		<i>Weight : / Masse :</i> 	
<i>Electrical Power</i> 374 MERRIMAC STREET NEWBURYPORT, MA 01950		<i>Part / Article:</i> SEE TABLE	
<i>Éch / Scale :</i> 1:1		<i>Page :</i> 1/1	
<i>Format / Size :</i> A			

D70QS600-4
D70QS500-4
D70QS450-4
CATALOG NUMBER

Ce plan strictement confidentiel est la propriété exclusive de la société MERSEN sans l'autorisation écrite de laquelle il ne peut être ni reproduit, ni copié, ni communiqué à des tiers.
This drawing and specifications there on is property of MERSEN and shall not be reproduced or copied or used in whole or in part as the base for manufacture or sale of item without written permission.